

Teamwork, friendship, security, professionalism, integrity, honesty, laughter, hard work, diligence, vigilance, alert and pride is what makes us the **leader in the state for corrections.**

A Message From the Warden

Dear Director Bartruff,

It has been an honor and a pleasure to succeed Warden Nick Ludwick in **leading Iowa's only maximum security facility.** Warden Ludwick's retirement in January 2017 left a lasting legacy at ISP; his leadership and friendship is missed by many.

Several significant events occurred during the past year. First, we hosted the first public tour of the old institution. Over 3500 people stood in line for hours to see what lies behind the 42 foot walls. The 178 year old facility is the foundational piece of the Ft Madison history. It is important for our community to see where we came from in order to embrace the growth and progress that our new direct supervision facility provides.

We also introduced two additions, Thelma and Louise, to our Housing Unit 4 population. Thelma and Louise were shelter dogs who have found a welcoming home with our aging offenders. The pets bring a sense of humanity to the population and allows them to care for something bigger than themselves.

Finally, we were excited to begin a vegetable garden within our secure perimeter. Growing and working in a garden can bring peace and reward as our offenders were able to see their hard work pay off. Their efforts produced several hundred pounds of fresh vegetables for the population to enjoy in the dining hall. We plan to enlarge the garden next year.

ISP Staff have been excited to embrace these changes and continue to impress me with their versatility and ingenuity in dealing with what can be a stressful environment.

Thank you for this continued opportunity to be a part of the Iowa State Penitentiary team.

Sincerely,



Patti Wachtendorf
Warden

Our Mission :
Creating Opportunities for Safer Communities

Teamwork, friendship, security, professionalism, integrity, honesty, laughter, hard work, diligence, vigilance, alert and pride is what makes us the **leader in the state for corrections.**

Table of Contents

Management Team	04
Table of Organization	05
History	06
Education Report	08
John Bennett Unit	10
Iowa Prison Industries	11
Budget/FY 17 Financial	13
Unit Teams	15
Health Services	16
Food Service	17
Departments/Staff	19
Throughout the Year	26

Teamwork, friendship, security, professionalism, integrity, honesty, laughter, hard work, diligence, vigilance, alert and pride is what makes us the **leader in the state for corrections.**

Meet the Management Team



Warden
Nick Ludwick
01/31/2017



Warden
Patti Wachtendorf
02/01/2017



Deputy Warden
Mark Roberts



Associate Warden Treatment
Mike Schierbrock



Associate Warden Security
Doug Bolton



Acting Associate Warden Administration
Terri Hamm



Associate Warden Industries
Becky Jones

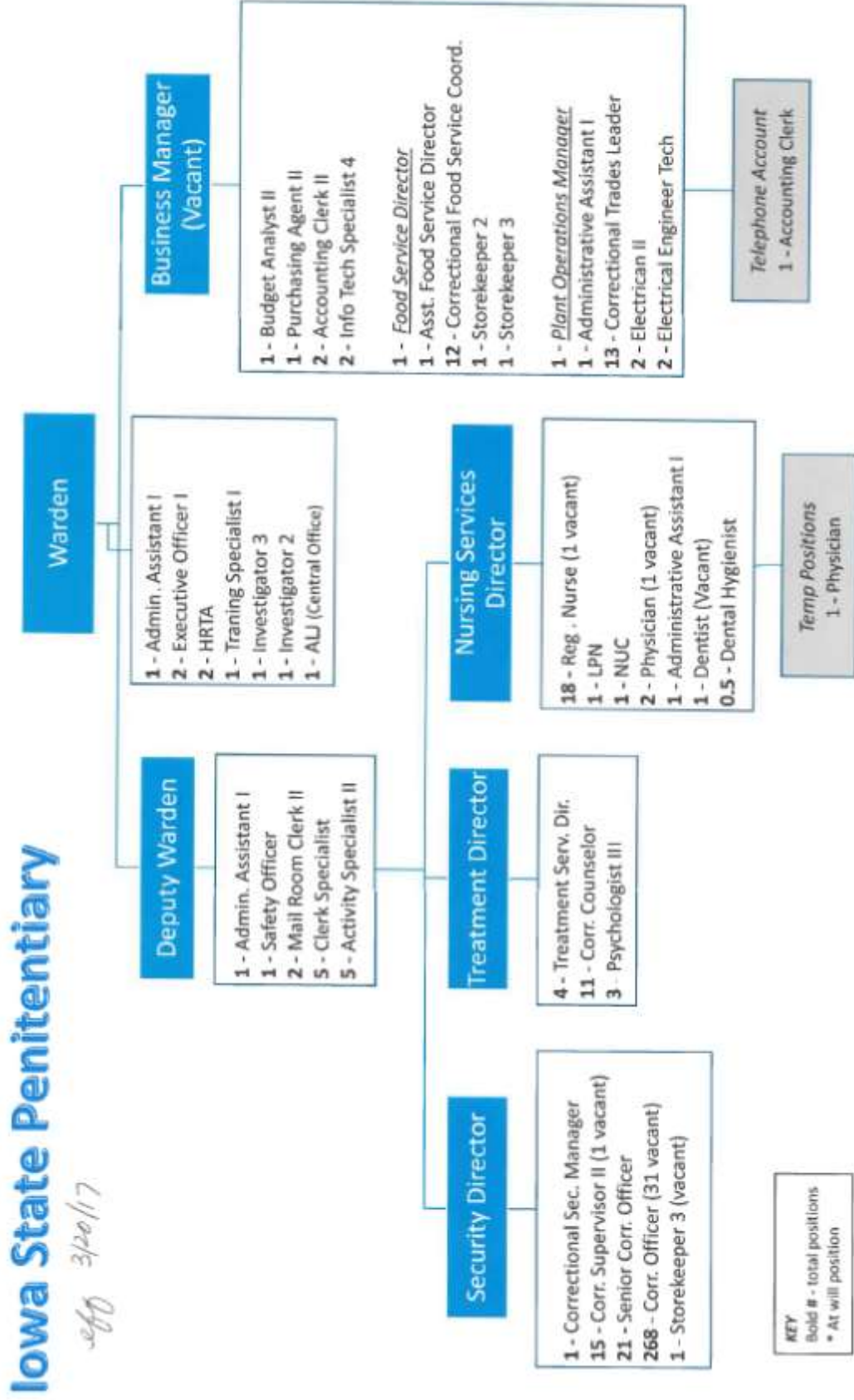


Human Resource Director
Phyllis Porter

The management team works together everyday to ensure safe and efficient operations in all aspects of the facility.

Teamwork, friendship, security, professionalism, integrity, honesty, laughter, hard work, diligence, vigilance, alert and pride is what makes us the **leader in the state for corrections**.

Table Of Organization



Teamwork, friendship, security, professionalism, integrity, honesty, laughter, hard work, diligence, vigilance, alert and pride is what makes us the **leader in the state for corrections.**

History



In January 1839, to ensure the safety of the citizens of the Iowa territory, the Territorial Legislature, meeting in Burlington, signed into law the edict to create a penitentiary along the Mississippi River while appropriating \$20,000 for this purpose.

This facility was to be "of sufficient capacity to receive, secure, and employ 136 convicts" and was to be built on ten acres donated by the citizens of Fort Madison.

Iowa's first prison started out as a hole in the ground under the floor of the "Warden's mansion". Seven of the first eleven prisoners escaped.

The construction of the first cell house, known as Cell House 17, was completed in October 1841 at a cost of \$55,933. When Iowa became a state in 1846, the legislature appropriated money to enlarge the prison.



Improvements, enlargements and additional construction continued through 1854 when Cell house 17 contained 144 cells. The original facility was a two story sandstone cell block intended to house only those offenders 31 years or older or those convicted of the most serious felonies. A third story was added in the 1870's. Additional



buildings and cell houses, as well as a large sandstone wall with regularly placed gun towers, were added as the inmate population grew. The original ten acres has grown to over 55 acres, excluding the farm properties.

In 1985, Cell house 17 was closed following a court ordered reduction in inmate population after 145 years of service. This resulted in the loss of 318 beds.

Three major cell houses were constructed between 1906 and 1920. In 1957, these four cell houses were home to 1,116 men. The units were remodeled over the years with the last major renovation taking place in the early 1980s to enable the unitization of ISP.



History



Cell house 220 was built around 1910 of cut stone masonry. It is approximately 14,600 square feet with two separate levels, each containing two ranges.

Remodeling to allow for unitization was completed in 1979 at a cost of \$818,995. The cell house has 48 cells and has historically served as the housing unit for those offenders requiring the highest level of security in the state. This unit houses the

highest privilege level of offender up to the close of the facility.

Cell house 19 was built in 1907 of cut stone masonry and is approximately 49,200 square feet. It is divided into three separate units, Cell houses 219, 319 and 419. Each unit has two separate ranges on each level. A unitization remodeling project in 1982 was completed at a cost of \$1,521,737.



Cell house 218/318 houses general population offenders, encouraging positive adjustment with increased privileges and focusing on programming and release options. It was built between 1910 and 1920 of cut stone masonry and is approximately 33,000 square foot to include 222 cells on five ranges. In 1983, a unitization project was completed at a cost of \$1,311,241 and resulted in the loss of 100 beds.



In August of 2015 over 500 offenders were moved from the original location to the new facility just north-east of the historic structure. The move was without incident and now the facility is operating smoothly at its new location.



Education Report

Education Report Iowa State Penitentiary Fiscal Year 2017 – 2018

HSED

51 individuals took at least one HSED test at Iowa State Penitentiary in fiscal year 2016 - 2017.

25 completed their HSED with an average combined score of 65.

The department's overall passing rate was 93% with 10 registered fails out of 148 total tests.

The department recorded 8,623 total contact hours in HSED.

The completion pass rate was 92%.

HSED Subject	HSED Number of Tests	HSED Number of Fails	HSED Average Scores	HSED Current Pass Rate Percent
Writing	22	4	12	82
Social Studies	32	3	13	91
Science	34	0	13	100
Reading	24	2	12	92
Math	36	1	12	97
Overall Total	148	10	12	93
Completions Total	25	2	65	92

Literacy & ESL

31 individuals participated in Literacy programs in fiscal year 2016 - 2017.

14 offenders earned their Literacy Completion Certificates.

The department completion rate was 45%.

The department recorded 1,198 total contact hours in Literacy.

Vocational Education

The Education Department at ISP provides testing for all apprenticeship programs.

147 vocational exams were proctored in fiscal year 2016 - 2017.

9 individuals completed apprenticeship education courses.

The department recorded 0 total contact hours in Vocational Education.

Education Report

(continued)

Teamwork, friendship, security, professionalism, integrity, honesty, laughter, hard work, diligence, vigilance, alert and pride is what makes us the **leader in the state for corrections**.

Special Education

Seven individuals participated in Special Education programs in fiscal year 2016 - 2017.

All seven were HSED students and 0 were High School students.

1 special education student earned his HSED at ISP this fiscal year.

The department recorded 228 total contact hours in Special Education.

Testing and Assessment

Testing and Assessment at Iowa State Penitentiary includes the TABE reading and math, HiSET Official Practice test, HiSET Official test, NCRC and Apprenticeship testing. Total department assessment hours were 1,631.

Staffing

The department employed 2 full time instructors for the first two quarters of fiscal year 2016 – 2017. Each of these instructors taught HSED and Literacy. ISP had a teacher vacancy for the 3rd and 4th quarters of the FY. The Administrative Assistant position was increased to two days per week.

Highlights

Due to the move to the new facility, there was no school or testing for the first six weeks of FY16. This included JBU as they were heavily involved in the preparation and cleanup associated with the move. Despite this, ISP was able to increase their number of HSED completions by 5.

- There were a total of 19 HSED completions at ISP.
- ISP began apprenticeship testing in February.
- Education Staff attended all four DOC Quarterly Trainings.
- Education Staff attended three SCC Staff Development/In-service days, the WIOA conference, HiSET trainings, and hosted the state CEA Meeting.
- Beth Deacon presented at the WIOA conference per a request from IDOE.
- Kerry Murray continued to serve as CEA Region IV Director.
- Sue Dunlay retired after 20 years of service.
- Administrative Assistant Kim Kingery became certified HiSET Administrator and NCRC test proctor.
- Matt Mitchell PhD, Great Prairie AEA, replaced Jeff Peterson as Special Education Instructor.
- John Bennett Unit restructured the method of delivery and scheduling of Education to comply with IDOC, IDOE and CEA standards.
- SCC AEL Director and Corrections Liaison Elizabeth Campbell resigned in June.

Teamwork, friendship, security, professionalism, integrity, honesty, laughter, hard work, diligence, vigilance, alert and pride is what makes us the **leader in the state for corrections.**

John Bennett Unit

A Brief History—

The John Bennett Unit (JBU), formerly medium security facility, was built in 1963. In 2010 it was converted to minimum security and was located northeast of the maximum security unit.

On October 14, 2014 the John Bennett Unit moved from its former location to the Clinical Care Unit which had been renamed John Bennett.

Moving facilities was necessary due to maintenance needs at the Old JBU and the ability to consolidate staff.

There are numerous crews that go into the Fort Madison as well as Keokuk communities and work everyday. These offender work crews take care of mowing lawns, cemeteries as well as special projects.

The JBU bike shop is operated by offenders and re-furbished approximately 175 bikes for underprivileged children this year.



John Bennett Facility

The offenders repair the bikes and then are issued to the Battered Women's Shelter, Burlington Area Toys for Tots Program, Fort Madison Salvation Army, and various other area organizations.

The John Bennett unit closed in March of 2017.

Minimum Live Out

With the closing of the John Bennett facility, the west side of Housing Unit four was adapted to house 20 –30 Minimum Live Out (MLO) offenders.

The MLO offenders are essential in performing many duties through out the institution as they prepare for the transition back into the community.



Minimum Live Out Dayroom

Iowa Prison Industries

Teamwork, friendship, security, professionalism, integrity, honesty, laughter, hard work, diligence, vigilance, alert and pride is what makes us the **leader in the state for corrections.**



Associate Warden Industries
Becky Bessine

Iowa Prison Industries is a job training program that works by changing the lives of offenders to improve their odds for a successful reentry. Many of the offenders working in IPI programs have not previously held any responsible job, and come in lacking the basic skills necessary to successfully re-enter society, i.e. showing up for work, producing a quality product, working in a team environment.

Iowa Prison Industries give offenders an opportunity to develop these skills, as well as hands-on-teaching of offenders in the area of woodworking, this includes HFH cabinets, millwork, dorm furniture, office and library furniture just to name a few.



From the revenue of those sales, Iowa Prison Industries reinvests in state of the art equipment so job skills can closely replicate the outside manufacturing jobs.

Iowa Prison Industries is self-funding and receives no appropriations.

In recognition of her outstanding accomplishments and 29 years of service,



Becky Bessine, Associate Warden (Pictured left) for Ft. Madison and Mt. Pleasant, has been named the winner of the 2017 **National Staff Award** for the National Correctional Industries Association (NCIA). In receiving the award, Becky was selected ahead of

colleagues from all 50 states as well as the federal prison system. The recipient of this prestigious award is recognized as achieving "superior performance and supervisory excellence of a correctional industries staff member who has made a significant and sustained contribution to a correctional industries program."



Laura Mendez—Office

Iowa Prison Industries

Teamwork, friendship, security, professionalism, integrity, honesty, laughter, hard work, diligence, vigilance, alert and pride is what makes us the **leader in the state for corrections.**



Tony Ellison, Aaron Lofthus, Tom Siebert, Shane Blanchard, Brad Kite, Jeff Bailey-Supervisor, , Seth Essing, Bryan Koechle.

IPI is able to provide these programs at no cost to taxpayers by supplying high quality products to government agencies and nonprofits.

PIMS-The Prison Industries Manufacturing System is a system developed using the tools and skills that world class companies recognize as essential to remain competitive. IPI has 5 goals; each goal represents an important area of focus for IPI, with the health and safety being the most important. **Health and Safety, Quality Delivery, Cost, People**



Involvement

Work units adopt their own goals in support of the overall IPI goals. The work unit goals will be directly impacted by the action of that work unit, which means they have ownership of those goals. Each work group has their own Metric Board, which helps assess their progress and identify problems that need to be worked on. Continual Improvement!

Prison Industries recently adopted our "CI (Continuous Improvement) IDEA" program. The best source of improvement ideas is the person doing the job, so the IPI CI program encourages everyone to share well thought out suggestions that will help the operation improve, focusing on the 5 PIM goals.

Sales for this branch of IPI for FY17 **\$4,205,573**

Budget Report

Teamwork, friendship, security, professionalism, integrity, honesty, laughter, hard work, diligence, vigilance, alert and pride is what makes us the **leader in the state for corrections.**

Revenue Collected						
202	Local Governments	191,493.03	0.00	191,493.03	135,500.00	141.32
205	Intra-State Reimbursements	9,374.21	0.00	9,374.21	100.00	9,374.21
234	Gov Transfer In Other Agencies	22.35	0.00	22.35	100.00	22.35
401	Fees, Licenses & Permits	49,664.48	0.00	49,664.48	40,000.00	124.16
Total Revenue Collected:		250,554.07	0.00	250,554.07	175,700.00	142.60

Category	Total YTD Collected From Offenders
Child Support	\$ 377,886.69
Inmate Pay for	\$ 49,664.48
Restitution	\$ 2,217,937.72
Allowance	\$ 260,185.29

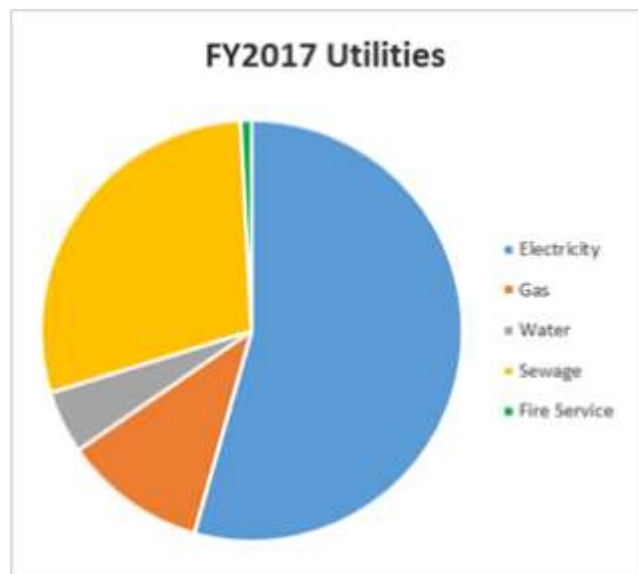
Prison	Total Expenditures	Average Daily Population	Annual Cost	Average Daily Cost
ISP		657.70		
ISP-JBU		137.40		
Total	\$ 42,660,363.48	795.10	53,654.09	147.00

Breakout of Utilities

FY2017 Utilities

Electricity	\$	964,578.04
Gas	\$	195,161.93
Water	\$	85,839.08
Sewage	\$	512,725.87
Fire Service	\$	15,000.00
	\$	1,773,304.92

During FY2017 ISP spent \$1,773,304.92 on utilities.



Expenditure Report

Teamwork, friendship, security, professionalism, integrity, honesty, laughter, hard work, diligence, vigilance, alert and pride is what makes us the **leader in the state for corrections**.

FY2017 Expenditures				
		Actual Expenditures	Department revised Budget	Percent (Actual of Budget)
101	Personal Services	35,008,438.81	36,908,765.46	94.85
202	In State Travel	44,636.65	23,725.00	188.14
203	State Vehicle Operation	72,429.90	75,100.00	96.44
204	State Vehicle Depreciation	0.00	100.00	0.00
205	Out Of State Travel	7,023.43	5,200.00	135.07
301	Office Supplies	9,971.86	10,101.00	98.72
302	Facility Maintenance Supplies	244,206.62	84,500.00	289.00
303	Equipment Maintenance Supplies	115,257.59	71,000.00	162.33
304	Prof. & Scientific Supplies	108,118.01	55,000.00	196.58
306	Housing & Subsistence Supplies	325,785.34	165,001.00	197.44
307	AG., Conservation & Hort Supply	2,815.39	1,000.00	281.54
308	Other Supplies	362,123.36	239,940.00	150.92
311	Food	1,379,177.41	1,075,000.00	128.30
312	Uniforms & Related Items	176,992.35	117,500.00	150.63
313	Postage	1,520.04	100.00	1,520.04
401	Communications	98,739.81	97,300.00	101.48
402	Rentals	1,880.73	3,000.00	62.69
403	Utilities	1,773,304.92	1,448,500.00	122.42
405	Prof & Scientific Services	262,588.77	110,000.00	238.72
406	Outside Services	108,257.25	96,100.00	112.65
409	Outside Repairs/Service	372,417.95	152,250.00	244.61
414	Reimbursements To Other Agency	1,434,675.39	1,552,375.00	92.42
416	ITD Reimbursements	125,445.28	115,500.00	108.61
434	Gov Transfer Other Agencies	19,694.26	800.00	2,461.78
501	Equipment	47,420.86	0.00	0.00
502	Office Equipment	7,411.86	6,000.00	123.53
503	Equipment-Non Inventory	40,517.39	(275,136.00)	(14.73)
510	IT Equipment & Software	167,968.79	127,546.00	131.69
602	Other Expenses & Obligations	335,647.46	318,000.00	105.55
701	Licenses	5,896.00	1,647.00	357.98
Total Expenditures:		42,660,363.48	42,585,914.46	100.17

Treatment Department

Teamwork, friendship, security, integrity, honesty, laughter, hard work, diligence, vigilance, alert and pride is what makes us the **leader in the state for corrections**.



Pictured: Correctional Counselor (C/C) Dan Roach, UM Brad Hoenig, C/C Angela Roller, C/C, Lynn Hartsock, C/C Janie Mendez, C/C Rich Barlow, Unit Manager Michelle Waddle, C/C Shane Milligan and C/C Dave Foehring. Missing UM Todd Ensminger

The Unit Management system is integral within the Iowa State Penitentiary complex. Security, correctional counselors and psychologists work together to ensure that the offender population is classified appropriately and offered the needed treatment programs identified best for the population housed at the Iowa State Penitentiary.

In FY 2017 the Treatment Department for those unit teams were made up of:

HU1: TSD Todd Ensminger, Captains Adam Benda, Chad Cangas, Correctional Counselors Rich Barlow, Lars Rude, and Jon Wells, along with Psychologist Mike Einschnicher. HU1 is our restricted housing unit, housing GP Tier 1, short term restricted housing, long term restricted housing, and long term restricted housing program, Protective Custody, investigative segregation, and administrative segregation.

HU2: TSD Berl Wilcox, Captains Mark Shanstrom, Jeremy Engeman, Correctional Counselors Janie Mendez, Shane Milligan, and Psychologist Tracy Blanchard. HU2 is where Tier 2 offenders are housed. HU2 has a self-contained T4C program that is offered within HU2 for Tier 2 offenders only.

HU3: TSD Michelle Waddle, Captains Roldolfo Gonzalez, Jack Gray, Counselors Dave Foehring, Angela Roller, and Psychologist Joy Kuper. HU3 is where Tier 3 and Tier 4 offenders are housed. Tier 3 offenders get T4C in the program building.

HU4: TSD Brad Hoenig, CC Bob Schneider, CC Anne Gehle. HU4 is the housing for our minimum work outs and our medical beds.

Program Building: T4C dedicated facilitators Correctional Counselors Dan Roach, Lynn Hartsock. Lynn and Dan facilitated 72 offenders thru T4C in this fiscal year.

T4C totals for the fiscal year at the ISP complex is 96.

Psychology:

For FY 2017 the Iowa State Penitentiary Psychology Department had 3 full time psychologists onsite. Psychological services can be requested by an offender by kiosk messaging their assigned psychologist, staff referral, and classification team referral.



Pictured: Joy Kuper and Mike Eisnicher



Pictured: Psychologist Tracy Blanchard

Long Term Restrictive Housing

This program is a 12-18 month program that uses cognitive behavior interventions based upon the Challenge Series, with the final phase being T4C.

Other Programming

ACTV:

Achieving Change Through Values-Based Behavior. This program is a curriculum for domestic abuse convicted offenders. It works with offenders to identify what they value in life – often their children – and use their own experience as a guide to making better choices and building a healthier relationship with their partner.

Prime for Life:

Prime for life is an evidence based alcohol and drug program designed for people of all ages. It is designed to gently but powerfully challenge common beliefs and attitudes that directly contribute to high risk alcohol and drug use. The program goals are to reduce the risk for health problems and impairment problems. Target audience of offenders for this program are those that need to complete the group to have their Iowa Driving privilege re-instated.

T4C Thinking for Change:

Thinking for a Change (T4C) is an integrated, cognitive behavioral change program for offenders that includes cognitive restructuring, social skills development, and development of problem solving skills.

Teamwork, friendship, security, alert and pride is what makes us the leader in the state for corrections.
Teamwork, friendship, security, alert and pride is what makes us the leader in the state for corrections.

Alternatives to Violence:

This voluntary program is based upon the fundamental belief that a power for peace exists in every person and that this power has the ability to transform one's tendency to react to a situation with violence. This program is conducted by an outside volunteer.

Orientation/Assessment:

The orientation process occurs within 7 days of the offender's arrival at ISP. A meeting is scheduled where staff come in and meet with offenders assigned to the general population. The team provides orientation that includes an explanation of the Prison Rape Elimination Act (PREA), the daily schedule, exercise procedures, procedures for count and a work assignment, religious activities, rules and the disciplinary process, living unit rules and procedures, classification, the grievance process, canteen and banking procedures, institutional safety rules, fire control and drills, mail, medical and sick call, psychological services, recreation, library and hobby craft, counseling services, educational offerings, and security expectations, process for ordering and possessing personal property.

Orientation for restricted housing offenders is limited to information applicable to that status and given by cell house staff assigned to the restricted housing unit.

Treatment/Program/Reentry Planning:

Reentry planning is developed with the offender and his assigned cell house team. Together they develop specific individualized re-entry planning for each offender based upon identified criminogenic risks and needs.

Treatment Services:

Offender's eligible or requiring programming are placed on specific waiting lists based on their criminogenic risks and needs.

Offenders may request to participate in non-recommended programming by submitting an offender memo to their Counselor. Programming will be based on availability of intervention and on treatment needs vs. Parole Board needs. All offenders are reviewed at a minimum, annually to ensure their re-entry plan is up-to-date.

Teamwork, friendship, security, alert and diligence, vigilance, pride is what makes us the **leader in the state for corrections**. **hard work, laughter, honesty, integrity, professionalism, security, alert and diligence, vigilance, pride**

Health Services



Pictured: RN Maggie Davis, Psychologist Tracy Blanchard, Pam York, LPN. Julie Woolever, RN Pam Foster, Psychologist Joy Cooper, Psychologist Mike Eisnicher and Nursing Services Director Tasha Whalen.

The Health Care Unit is responsible for the physical and mental health of the maximum security unit and the MLO offenders. Its specific areas of responsibility include offender medical, dental and mental health issues: 24/7 nursing coverage for

the facility; infection control; elderly and impaired offenders; quality management; environment health and health administration; health related reports and statistics; health-related offender grievances; offender health education and corrective action plans.

The department consists of a Director of Nursing, 15 Registered Nurses, a Nursing Unit Coordinator, an Administrative Assistant 1, Physician, part-time Dentist, Dental Hygienist, three Psychologists and a part-time Optometrist.

Twelve offenders are trained as Activities of Daily Living Assistant (ADLA) workers and working in the Multiple Care Unit. They provide basic care and assistance to the medically needy offenders housed in the MAH.

Twenty offenders are trained Hospice care givers in the Sail to Serenity ISP Hospice program. Together they cared for two palliative patients and one hospice patient in the past 12 months

ISP maintains a Medication Storage Area on-site. Medication is received from the IDOC centralized pharmacy. Offenders have the opportunity to participate in Self Administration of Medication (SAM's).

This program promotes offender self-reliance for their own health care.



Dr. Tessa Johnson works on a patient in dental.

Teamwork, friendship, security, professionalism, integrity, honesty, laughter, hard work, diligence, vigilance, alert and pride is what makes us the **leader in the state for corrections.**

Food Service



Beginning Food Inventory
\$ 532,747.16

Ending Food Inventory
\$ 603,263.81

During FY17, ISP provided a total of **939,985** meals to offenders and staff.

The average cost, per meal, was **\$2.70**

The ISP Dietary Department included one Food Services Director, One Assistant Food Services Director, 12 Food Service Coordinators, as well as offender assistants.

For Fiscal Year 2017 we served 59,690 meals to the Jail and Juvenile Center these are included in the total meals served.



Warehouse



The warehouse consists of 1 Storekeeper 3 and 1 Storekeeper 2. They are responsible for the receipt and delivery of all supplies for the institution.

The warehouse is a 45,000 square feet and is located in our new maintenance/warehouse facility. They are assisted by minimum outs offenders.

Maintenance



Plant Operations Manager Leonard Harvey oversees the operations of the Maintenance Department. The Maintenance Department consists of 13 CTL's, 2 Electricians, 2 Electronic Engineer Technicians and one Administrative Assistant. These staff are responsible for repairs, maintenance, plumbing at the new institution as well as keeping up with the old institution maintenance and repairs.

Teamwork, friendship, security, professionalism, integrity, honesty, laughter, hard work, diligence, vigilance, alert and pride is what makes us the **leader in the state for corrections.**

Business Office



Staff in the back row include; Diane Burgess, Terri Hamm, Travis Pitford, Denise Koechle, Sonya Freeman. Front row includes; Tabitha Halterman and Julie Banks.

The Business Office is staffed by 1 Purchasing Agent, Sonya Freeman, 3 Accounting clerks, Denise Koechle, Julie Orth and Diane Burgess, 2 Info Tech Specialist 4, Tabitha Halterman and Travis Pitford. They are supervised by Associate Warden of Administration Teri Hamm. The operating Budget for FY2017 was \$42,660,363.48.

The Business Office staff handle the day to day financial transactions of the institution, which include budgeting, institutional purchases, staff travel claims, bill processing and other financial transactions. In addition, offender fees, release money, offender payroll, commissary purchases, and offender store orders. ISP also handles the following statewide duties for all 9 institutions, restitution, child support, court filing fees and offender telephone receipts.

Teri also oversees the operations of the Maintenance & Dietary departments.

Teamwork, friendship, security, professionalism, integrity, honesty, laughter, hard work, diligence, vigilance, alert and pride is what makes us the **leader in the state for corrections.**

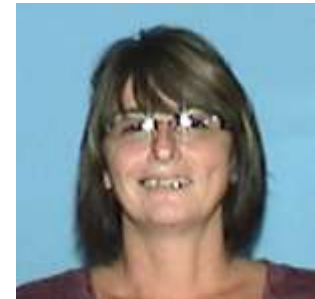
Mail Room



The Mail Room is a primary area of security and intelligence for the institution. Nikki Eaves (pictured left) and Cyndi Phillips (pictured below) both diligently inspect both incoming and outgoing mail for threats as well as contraband.

The Mail Room functions efficiently with two full-time staff members. They process approximately 160,000 pieces of incoming first class mail as well as packages, newspapers, books and other publications.

O-mail, (Offender email) is processed several times a day by the mail room. It is scanned for appropriateness as well as for security concerns. The incoming Omail is printed for those offenders whose status prohibits them from having kiosk access.



Records



Pictured: Carol Robinson, Kathy Weber, Shelia Vorwaldt, Kathy Crane and LeAnn Luttenegger

The Records Department was staffed by five Clerk Specialists. In addition to statewide jail credit recovery, the ISP complex Records Department conducts statewide audits of offender sentencing's. The records department staff are tasked with the responsibility of organizing the offenders file and ICON records entries. A sampling of their duties include document preparation for offender reentry to the community via paroles, work releases, and expiration of sentence as well as ensuring sentence time computations are accurate

Teamwork, friendship, security, professionalism, integrity, honesty, laughter, hard work, diligence, vigilance, alert and pride is what makes us the **leader in the state for corrections.**

Human Resources



Pictured: Kathy Rehman, Human Resource Director Phyllis Porter and Kelly Peters.

Two full-time Human Resources Technicians and one Executive Officer/HR Director processed timekeeping/payroll, staff evaluations, monitored leave usage, monitored FMLA along with the Reed Group, deferred comp, health/dental/life benefits, grievances, hiring, etc. for approximately 400 employees.

HR assists the supervisors in their use of the KRONOS timekeeping system. All leave/time off is directly entered into the KRONOS system and then reviewed/approved/denied directly by the supervisor. Same is applied for OT incurred.

FY 17 Staff

Average number of employees: 380

Authorized employees: 418.50

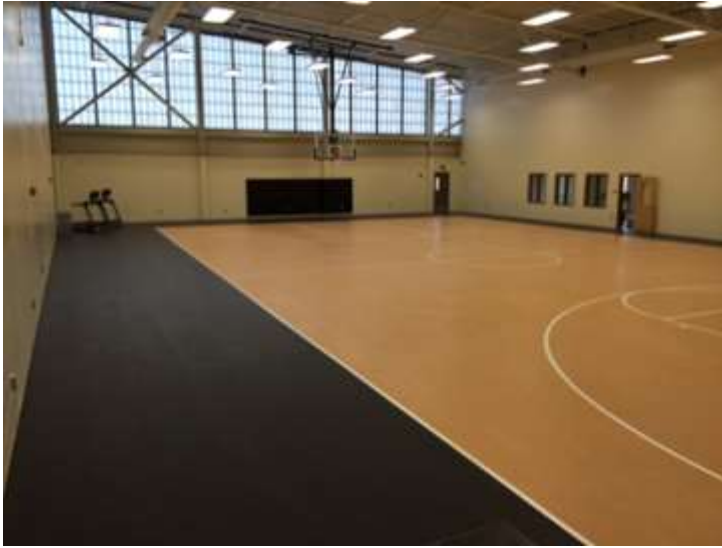
New Hires/Transfers: 35

Staff Promotions: 5

Retirements: 17

Teamwork, friendship, security, professionalism, integrity, honesty, laughter, hard work, diligence, vigilance, alert and pride is what makes us the **leader in the state for corrections**.

Recreation



The ISP complex Recreational department was staffed by 5 individuals, supervising leisure activities for offenders, as well as overseeing the offender libraries, offender sales of such items as ice cream and other snacks, offering movies for viewing and the offender television rental program. Offender **can choose to “rent to own”** a television by making 12 equal monthly payments or

he can choose to rent the unit on a month to month basis.

The library in the maximum security unit purchased 117 new books and averaged 75 tier 2, and 60 tier 3 patrons daily. General Population offenders checked out 4086 books and 480 magazines during FY 2014. Staff checked out and distributed 97 books weekly to restricted housing unit offenders.

An average of 65 offenders per day used the computers available. The library averaged 37 users per day.



Teamwork, friendship, security, professionalism, integrity, honesty, laughter, hard work, diligence, vigilance, alert and pride is what makes us the **leader in the state for corrections.**

CERT/ K9



The CERT unit at Iowa State Penitentiary (ISP) consists of C/O's Aaron Landers, Christian Boyer, Shane Jobe, Steve Dill, Brendon Freeman, James Roller and Jason Calfee (Not pictured Riley & Billings)

CERT & K-9 not only respond to emergencies, but due to the reduction in security staff, these staff also supervise yard activities in the absence of the assigned yard Sergeant and work the units and other areas as needed.

ISP's CERT unit consists of nine (9) Correctional Officers. CERT officers are also involved in the training of our staff. These officers are required to change hours and days off to accommodate the operations of the facility.

ISP K9 consists of three Sergeants and four K9's

The three K9's are dual purpose dogs that are Belgium Malinois. Dual purpose dogs are apprehension and narcotics detection dogs. The fourth K9 is an Irish Setter and is a tobacco and cell phone detection dog. They participate in the USPCA .

CERT & K-9 conduct approximately 90% of the UA's done at ISP.

They are also responsible for conducting major shakedowns of the facility as well as the day to day shakedowns in areas other than the housing units.



The K9 unit at Iowa State Penitentiary (ISP) consists of Sgt. Mike Barnes & K9, Sgt. Dustin Yager & K9 and Sgt. Zeb Butler & K9.

Security

The Security Department at ISP consisted of 213 Correctional Officers (filled positions) ,19 Senior Correctional Officers (filled positions), and 11 Correctional Supervisor II's (filled positions). This well trained staffing contingent maintained security at Iowa's maximum security prison.

The day to day security operations include offender escorts, observation, inspections, searches, operating electronic equipment and weapons, enforcing procedures and policies, conducting multiple counts, preparing written reports and maintaining both written and electronic logs as well as participating in training requirements. Security staff are also a major part of the classification process, Administration Segregation and Disciplinary Detention review process and have in-put into treatment plans for the offenders.

HNT

HNT attended the annual Iowa Crisis Negotiations Conference and Competition in Davenport, IA. There we heard speakers from the FBI who presented on case studies like Waco, TX and Ruby Ridge as well as a variety of other topics.

Members continue to train on a monthly basis, and we are hoping to send our six new members for their 40 hour basic class in the near future. We also continue to make cross training with CERT a priority and hope to hold a larger scale even for both teams to learn from in the upcoming year.

Membership List includes—Teneil Jones, Chris Jones, Chris Schaffer, Sheila Vorwaldt, Mitch Even, Justin Smith, Andy Bently, Jason Bohnekamp, Matt Lachepelle

SVSS

SVSS is a peer support program that provides trained team members to assist staff in dealing with stressful situations at work or in their personal lives in a confidential manner. They provide an active listener who knows how to assess the staff members need and help them identify and utilize, if necessary, other resources that are available. They also have a specific support responsibilities in the event of a major disturbance. SVSS members volunteer to be on call even when off duty and also may travel to other institutions to assist in supporting staff there if there is a need.

Members include—Chad Cangas, Cindy Fedler, Jason Gold, Darwin Johnson, Anne Gehle, Lynn Hartsock, Elain Lehman, Teneil Jones, Ken Lobberecht, James Roller, Joyce Miller, Christian Boyer, and Stephanie Hale.

Throughout the Year

ISP Employee Children's Scholarships

Scholarships were awarded to children of ISP employees. Twelve students received scholarships to further their education.

Each of the following students received a \$1000 Iowa State Penitentiary Scholarship:

Katherine Schierbrock **
Also recipient of the Scott Bryant Scholarship
Daughter of Mike Schierbrock

Alexandra Mendez
Daughter of Tony and Janie Mendez

Cole Thompson
Son of Shawn Thompson

Emily Gold
Daughter of Jason Gold

Emily Powers
Daughter of Joe Powers

Shannon Jones
Daughter of Darwin Johnson

Stephanie Hansen
Daughter of Kelly Peters

Joshua Koechle
Son of Kevin and Linda Koechle



ISP staff hosted three blood drives during Fiscal 2017.

33 units of blood was collected, saving over 99 lives!

Teamwork, friendship, security, professionalism, integrity, honesty, laughter, hard work, diligence, vigilance, alert and pride is what makes us the **leader in the state for corrections.**

Throughout the Year

Unsung Hero Award

Iowa State Penitentiary has participated in the Law Enforcement Torch run for more than 15 years. ISP Sgt. Chris McCormick has been an integral part of not only the Torch Run but also coordinating a Special Olympics' fundraiser in honor of Scott Bryant.

McCormick has helped to raise over \$25,000 to go to the family of fallen Correctional Officer Scott Bryant as well as to the Special Olympics.

Recently McCormick received the Scott Bryant Memorial 'Unsung Hero' Award for all of his efforts. "I was honored to receive the Award." Said McCormick, "It meant a lot to me and it was completely unexpected. The Scott Bryant Memorial Poker Run was initially put together as a means to honor my friend, Scott Bryant as well as offset expenses for the family"

The funds from the poker run were then donated to the Special Olympics. "This year will be the 14th Annual Poker Run and it has been a privilege to coordinate this event." Says McCormick "Scott was like a brother to me, and I know he would have done the same."



Torch Run 2017



Pictured for the 2017 special Olympics Torch run: Brad Peterson, Mike Barnes, Phyllis Porter, Chris McCormick, Shane Jobe, Sarah Johnson, Natasha Atwood, Dianne Burgess and Bob Burgess. .

Throughout the Year

Easter Egg Hunt

Correctional Worker Committee held an Easter Egg hunt on April 1st for employee's children/grandchildren. Hunts were held at 10AM and 3PM. The kids were divided into 3 age groups; 0-3, 4-6 and 7-12.



It took only a few minutes for the 40-50 kids armed with plastic buckets and baskets to pick up the over 1000 eggs and prizes scattered on the lawn south of the Warden's house.

The Easter Bunny was on hand to give out sugar cookies and have pictures taken with the kids.

The following were the lucky recipients of a bike in one of their eggs:

Kalyssa Hansen - Granddaughter of Kelly Peters

Lilyana Hansen - Granddaughter of Kelly Peters

Sophia Hale - Daughter of Brian and Stephanie Hale

Kayleigh Larkin - Daughter of Joe and Amber Larkin



Correctional Worker Week

May 7th - 13th

The Correctional Worker Committee did a fabulous job hosting events in celebration of Correctional Worker Week.



There was a picnic for all to enjoy with pork sandwiches and chips. In addition pop, pop corn and Ice Cream were given out through the week to help celebrate.

Teamwork, friendship, security, alert and pride is what makes us the **leader in the state for corrections**.
diligence, vigilance, integrity, honesty, laughter, hard work,

Throughout the Year

Old ISP Tours

Approximately 3522 people toured the old facility on Sunday, May 7th. Although the tours were scheduled to start at 9 am, the first tour was given around 8am to alleviate the building crowd.

Over all the people were patient with some waiting in line for over 3 1/2 hours. People with babies, small children as well as the young at heart, were happy that they waited to tour. Most said they would come again.

A debriefing lunch was held with some of the over 30 volunteers who helped that day to go over what worked and what needed improvement. There were a lot of great suggestions.



Photo Credit—Chuck Vandenberg—The Pen City Current

Warden Ludwick Retires



After nearly 42 years in corrections in both the Michigan and Iowa Prison systems Warden Nick Ludwick retired in January.

Warden Ludwick began his Iowa career in June of 2010 and was hired to oversee the build and transition of the new institution.

A task that was completed with the move in August of 2015 when the 500 plus offenders were move from the old facility to their new home on

330th Avenue just north in Fort Madison.

Warden Ludwick retired to Michigan to spend time with his wife and two children and one grandchild.

When announcing his retirement, Warden Ludwick announced his replacement, Warden Patti Wachtendorf from ICIW. Wachtendorf began her career at Iowa State Penitentiary and eventually moved to Mitchellville.

Warden Wachtendorf began her duties on February 1st.



Thelma & Louise Join the Team



Thelma

Iowa State Penitentiary adopted two dogs from PAWS – the no-kill animal shelter in Fort Madison in March.

The two dogs, that are now calling ISP home, are aptly named Thelma and Louise. Thelma, a 6 year old America Eskimo, and Louise, an 8 year old Jack Russell, both reside in Housing Unit 4. Housing Unit 4 is a medical/assisted living unit that houses 21 offenders who require some level of day-to-day care or assistance.

The offenders have taken an immediate interest in Thelma and Louise. You can find the dogs sitting contently with the offenders while watching TV or during a game of cards.

Designated offenders are responsible for walking the dogs outside and ensuring there is proper food and water for the duo. Funds generated by the offenders themselves are being used to pay for food and other pet related expenses, no state funds are used.



Louise

The Garden Grows!



The garden was located just south of Housing Unit 3.

Several offenders volunteered to work in the garden everyday.

ISP has not had a garden inside its secure perimeter for many years and that all changed in the spring of 2017.

Tomatoes, beans and lettuce were just a few things offenders enjoyed. Next year, the garden will grow even bigger!