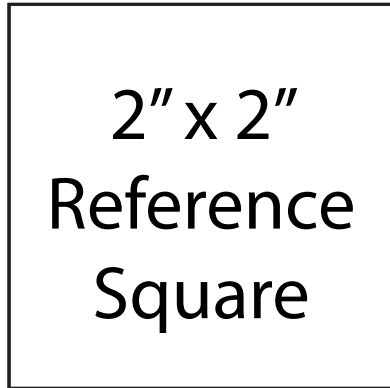




## Isolation Gown

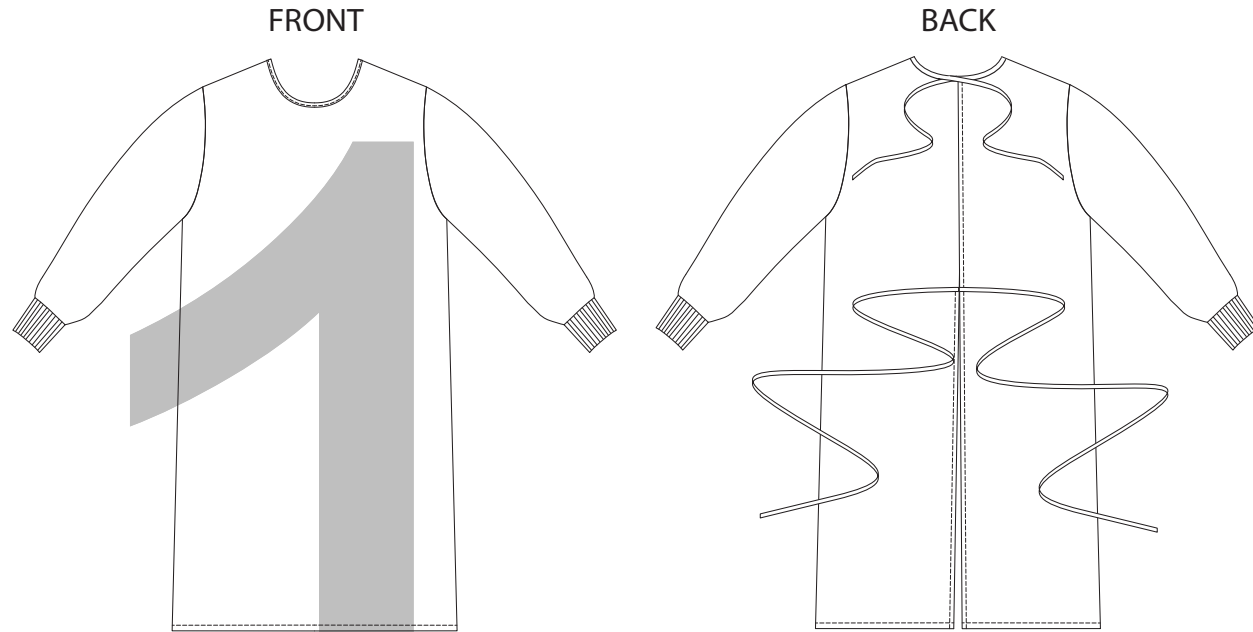
Unisex Sizes M-L-XL-2XL



### ASSEMBLING THE PRINTED PATTERN

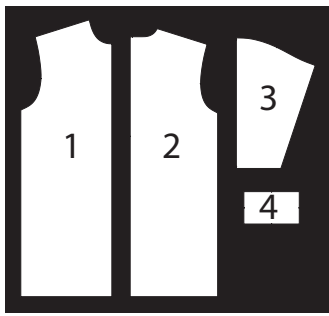
There are 45 pages for this pattern. Each page has a number and a rectangular edge. Align edges of rectangle and tape together in the order shown in the image below.

1	2	3	4	5	6	7	8	9
10	11	12	13	14	15	16	17	18
19	20	21	22	23	24	25	26	27
28	29	30	31	32	33	34	35	36
37	38	39	40	41	42	43	44	45



Description: Knee-length gown has back opening. Neck edge is finished with bindings that extend and tie at back neck. Waist ties are long enough to wrap around and tie in front. Sleeves have knit cuffs. Gown has extended shoulders and deep armholes for an oversized fit.

Standard Body Measurements	M	L	XL	2XL
Chest/Hip	40"	44"	48"	52"
Neck	15.5"	16.5"	17.5"	18.5"
Arm Length from CB Neck	34.5"	35.5"	36.5"	37.5"
Finished Garment Measurements	M	L	XL	2XL
Chest/Hip	50"	56"	62"	68"
Neck	18.5"	19.5"	20.5"	21.5"
Arm Length from CB Neck	35.5"	36.5"	37.5"	38.5"



# Isolation Gown

Unisex Sizes M-L-XL-2XL

- 1. Front
- 2. Back
- 3. Sleeve
- 4. Cuff

## MATERIAL REQUIRED

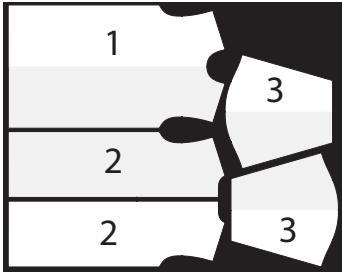
SIZES:

	M	L	XL	2XL	
Fabric 56" Wide - Cut Single Layer	2	2 5/8	2 5/8	2 3/4	yd
Fabric 56" Wide - Cut Folded	2	2 7/8	3	4	yd
Fabric 44" Wide - Cut Single Layer	2 5/8	3 1/8	3 3/4	3 7/8	yd
Fabric 44" Wide - Cut Folded	3 7/8	4	4 1/8	4 1/8	yd

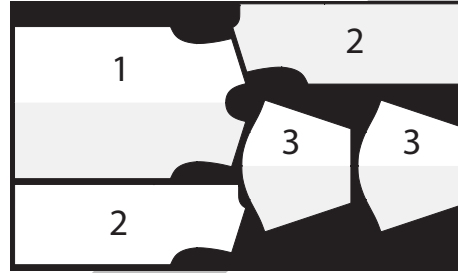
NOTIONS: Thread. One-Four yard package of Single or Double-Fold Bias Tape; 12" x 12" Piece of Ribbing.

## CUT SINGLE LAYER LAYOUTS

Fabric 56" Wide - Single Layer Size M



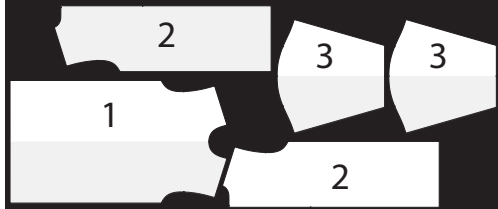
Fabric 56" Wide - Single Layer Sizes L-XL-2XL



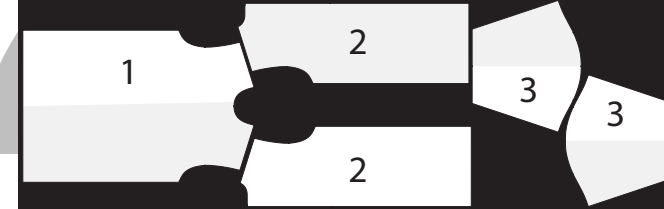
Ribbing 12" x 12" Piece ALL SIZES



Fabric 44" Wide - Single Layer Sizes M-L

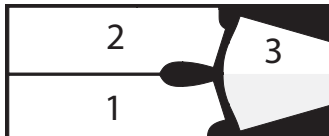


Fabric 44" Wide - Single Layer Sizes XL-2XL



## CUT FOLDED LAYOUTS

Fabric 56" Wide Size M



FOLD

Fabric 56" Wide Sizes L-XL



FOLD

Fabric 56" Wide Size 2XL  
Fabric 44" Wide Sizes M-L-XL-2XL



FOLD

SEAM ALLOWANCES: 3/8" SEAM ALLOWANCE included, unless otherwise specified.

All major seams are sewn with serger (overlock machine). Finish raw edges of hems.  
Hems, binding and cuff seams are sewn with straight stitch (single needle, lockstitch).

## GENERAL SEWING PROCEDURES

1. Join FRONT to BACK, right sides together (RST), at shoulder seam. Repeat for other side.
3. Join Sleeve to armhole, RST, matching center notch on sleeve to shoulder seam and notches at front and back armhole. Repeat for other sleeve.
4. Join front to back at side and sleeve seam, RST. Repeat for other side.
5. Fold cuff, RST, and stitch sleeve seam; for best results, use a straight stitch and press seam allowances open. Repeat for other cuff.
6. Fold cuff, wrong sides and raw edges together. Join cuff to right side of sleeve opening, matching cuff seam to sleeve seam and notches. Repeat for other cuff.
7. Fold hem at bottom edge 1/2" to wrong side. Stitch close to edge.
8. Cut two waist ties from bias tape, stitch close to folded edges.  
Waist tie cut length: M = 36", L = 38", XL = 41", 2XL = 44"
9. Place tie to right side of center back at placement notch. Stitch to secure. Repeat for other side
10. Fold hem at center back edge 3/8" to wrong side. Stitch close to edge. Repeat for other side.
11. Cut one 56" bias tape for neck binding and ties. Fold in half to locate center. Match center of tape with center front neck notch. Pin or clamp binding along neck edge, leaving ends extending past center back for ties. Stitch close to folded edges.

4

Bottom Edge

5

6



Grain of Fabric



M

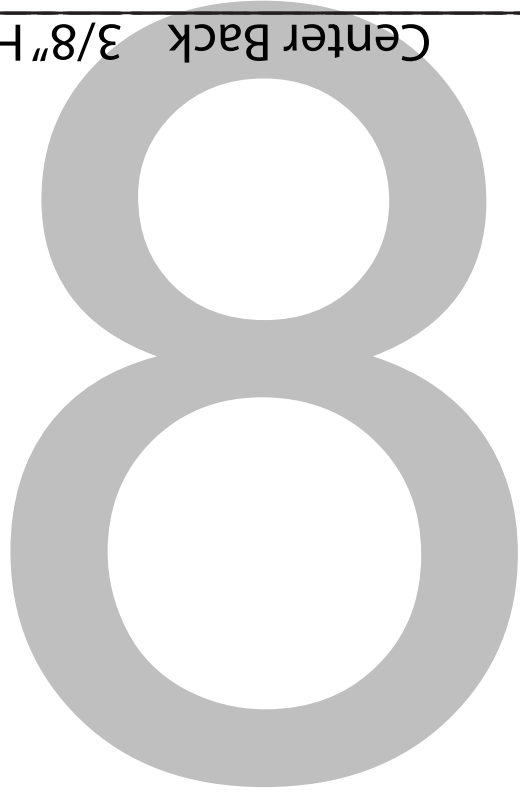
L

XL

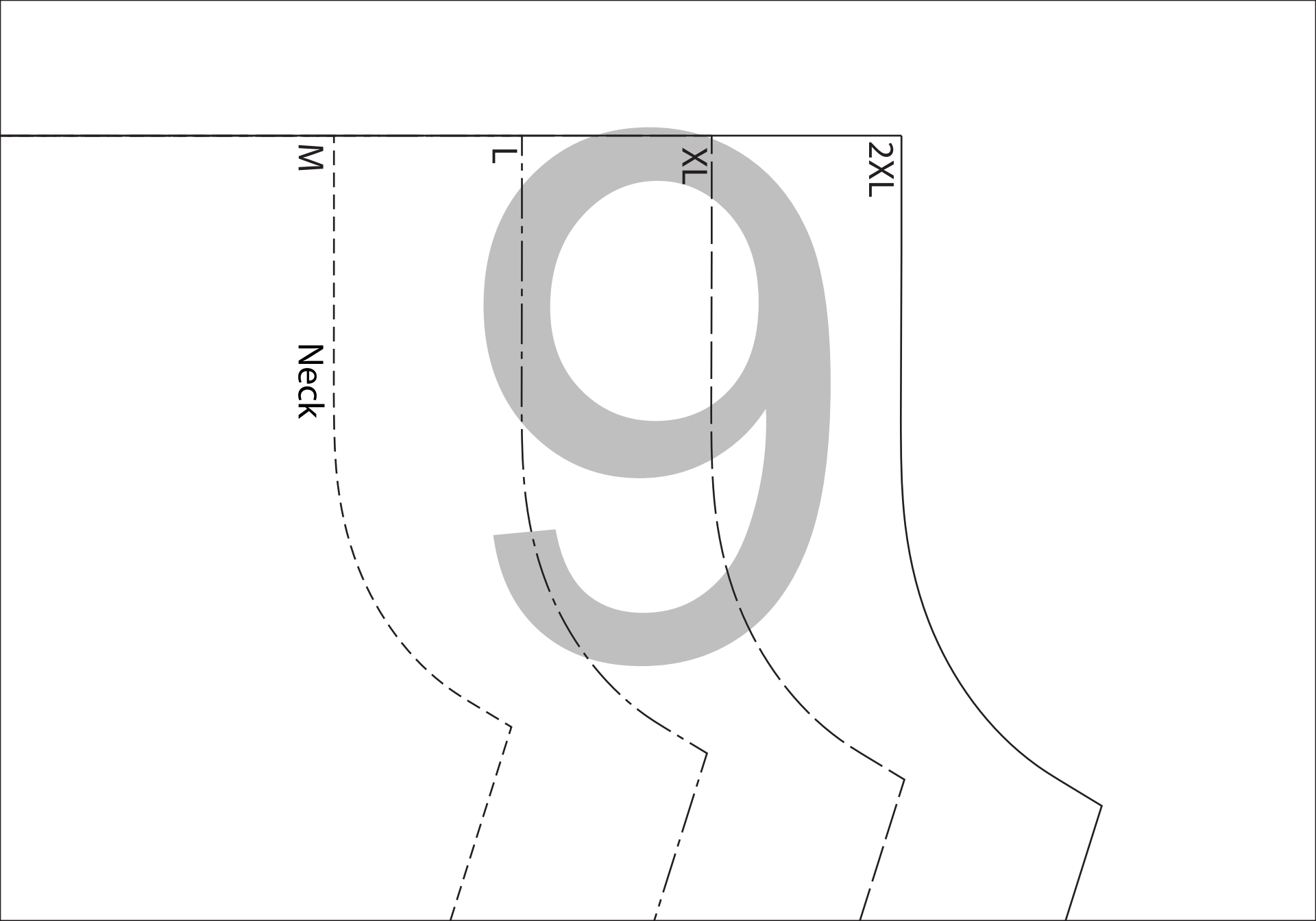
2XL

Tie Placement

Center Back 3/8" Hem Allowed







2XL

XL

L

M

Neck

10

1

1

12

1/2" Hem Allowed

13

14

15



16.2

Unisex Isolation Gown

Back

Cut 2

3/8" Seam Allowance



17

Armhole



Shoulder

18

19

2XL

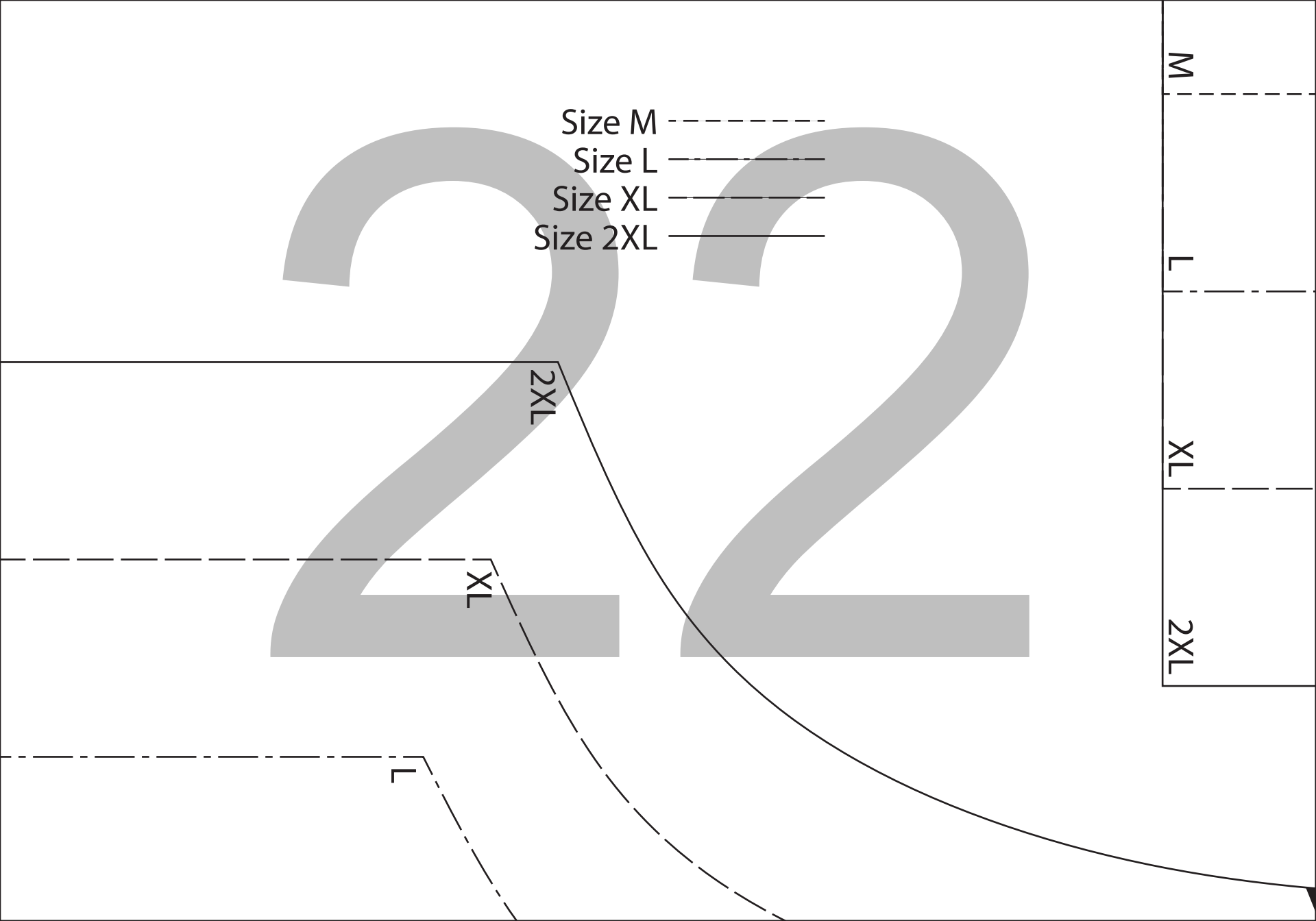
XL

L

20

2

1



Size M  
Size L  
Size XL  
Size 2XL

M  
L  
XL  
2XL

2XL

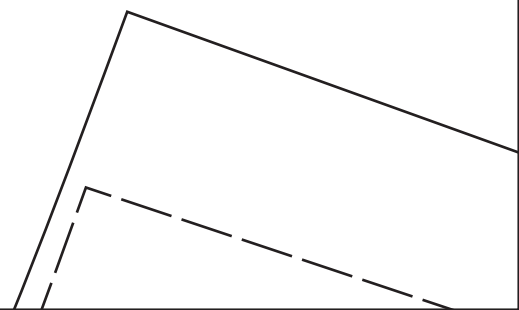
XL

L

23

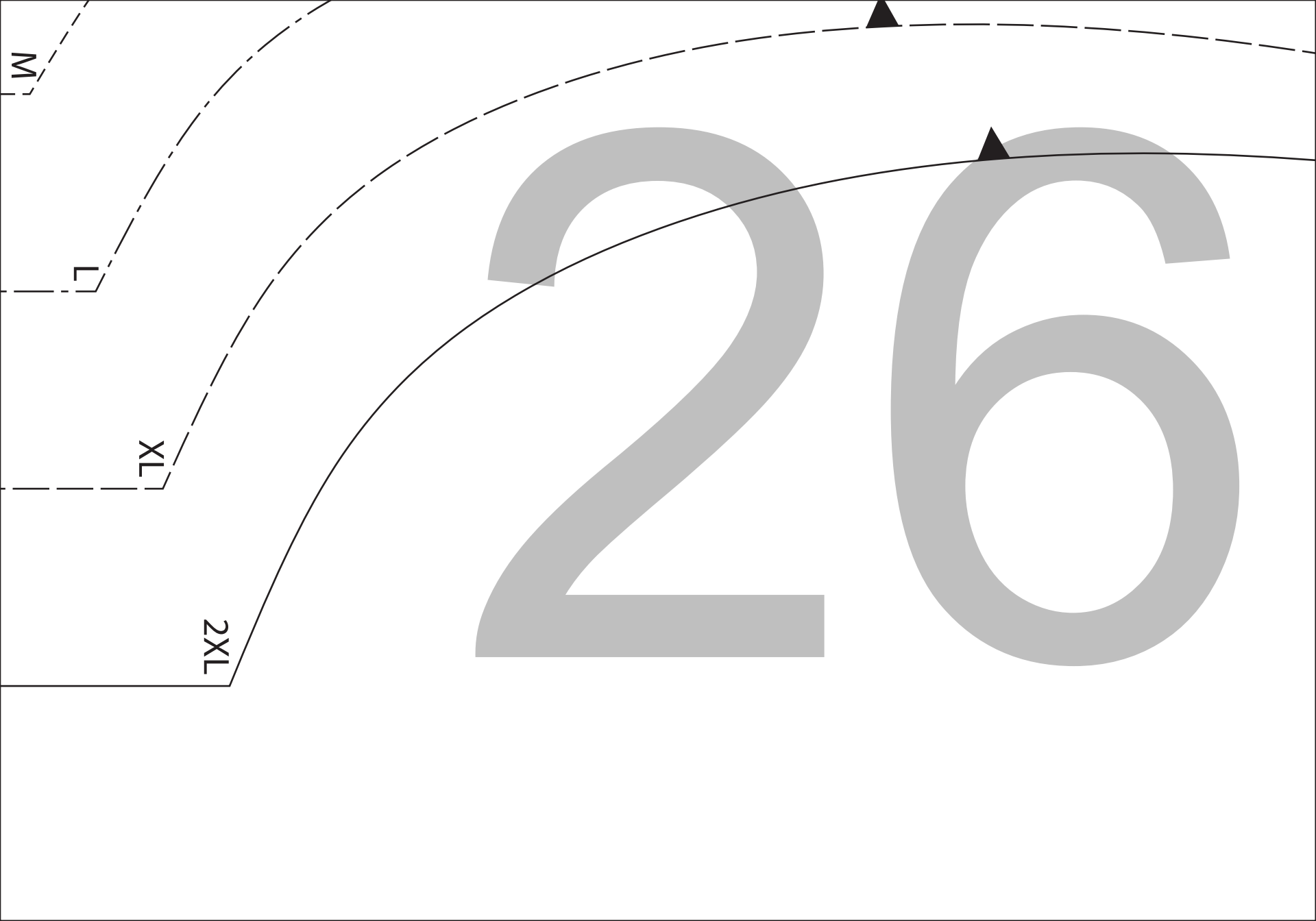
Side Seam

24

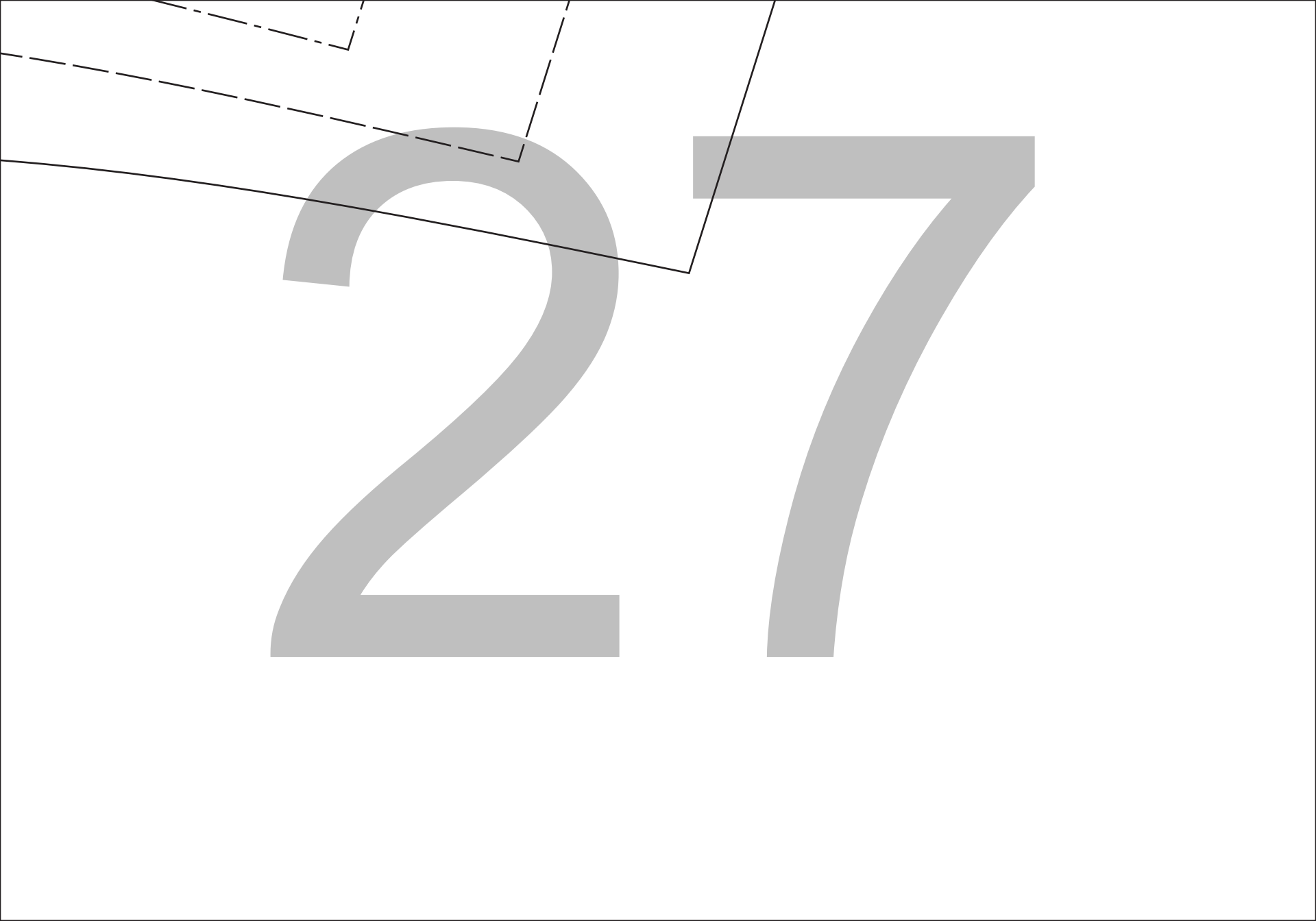




25



27



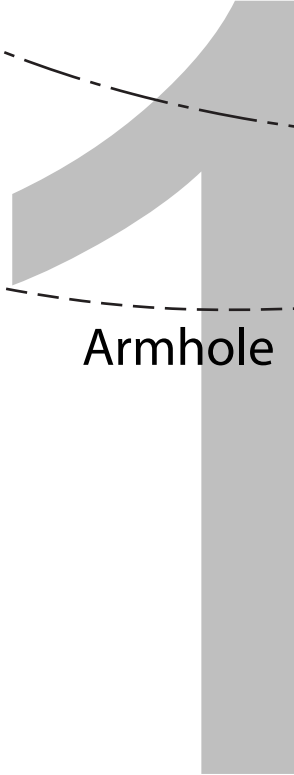
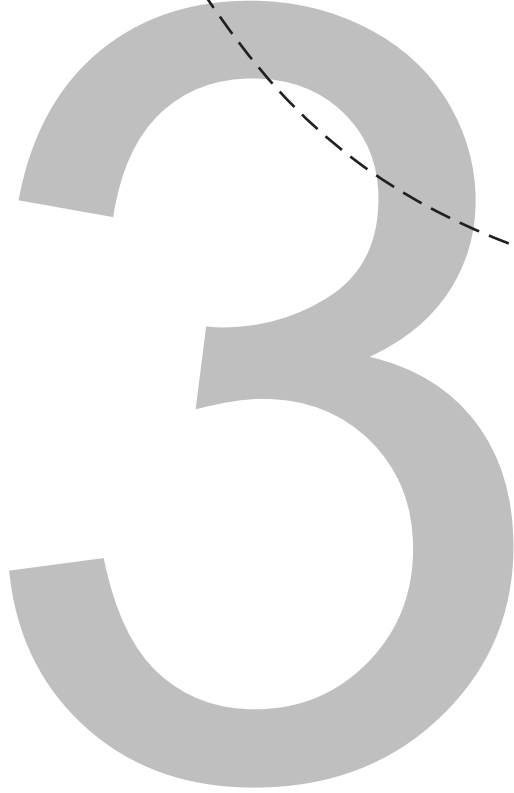
28

M

Bottom Edge

29

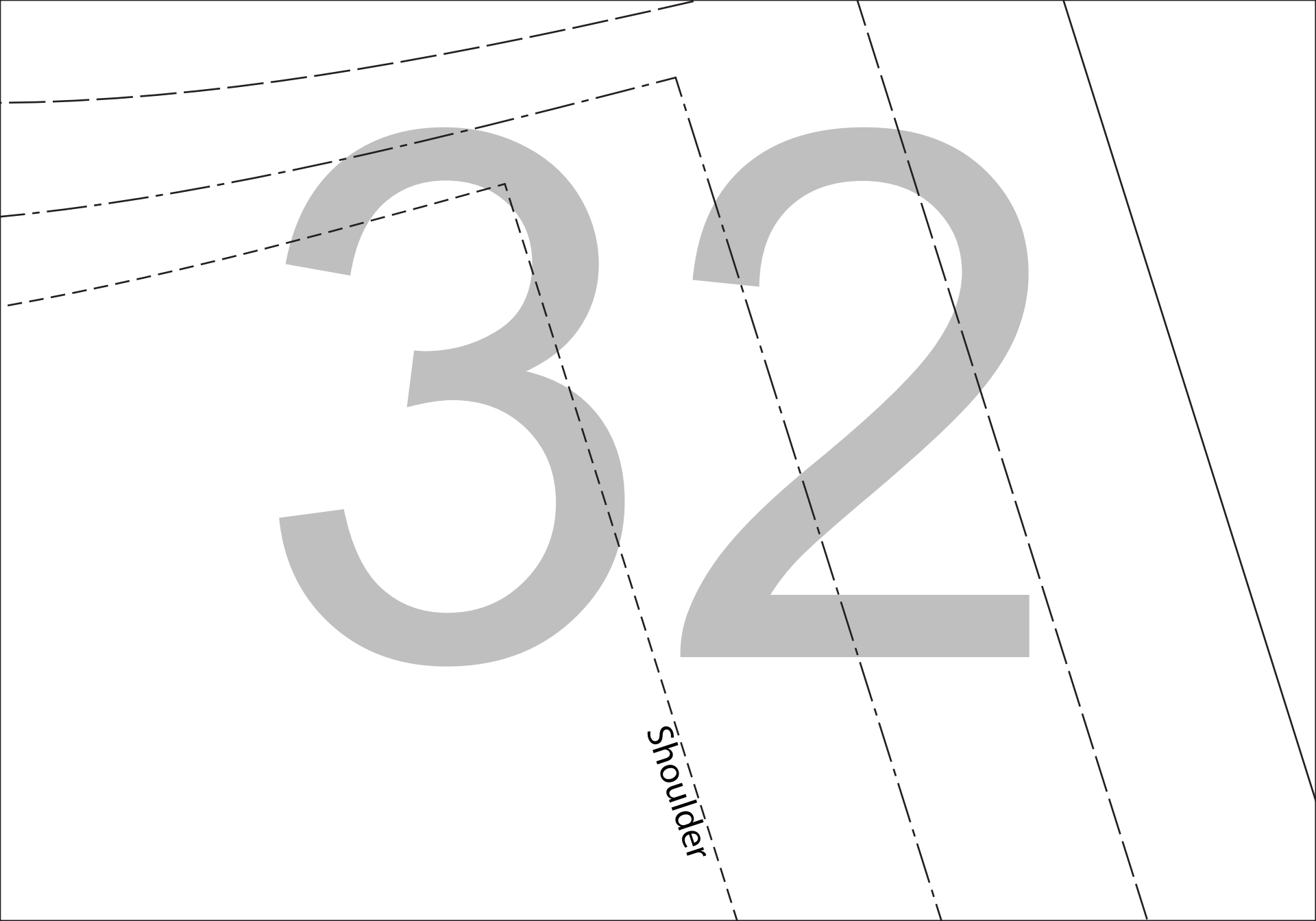
30



Armhole

M



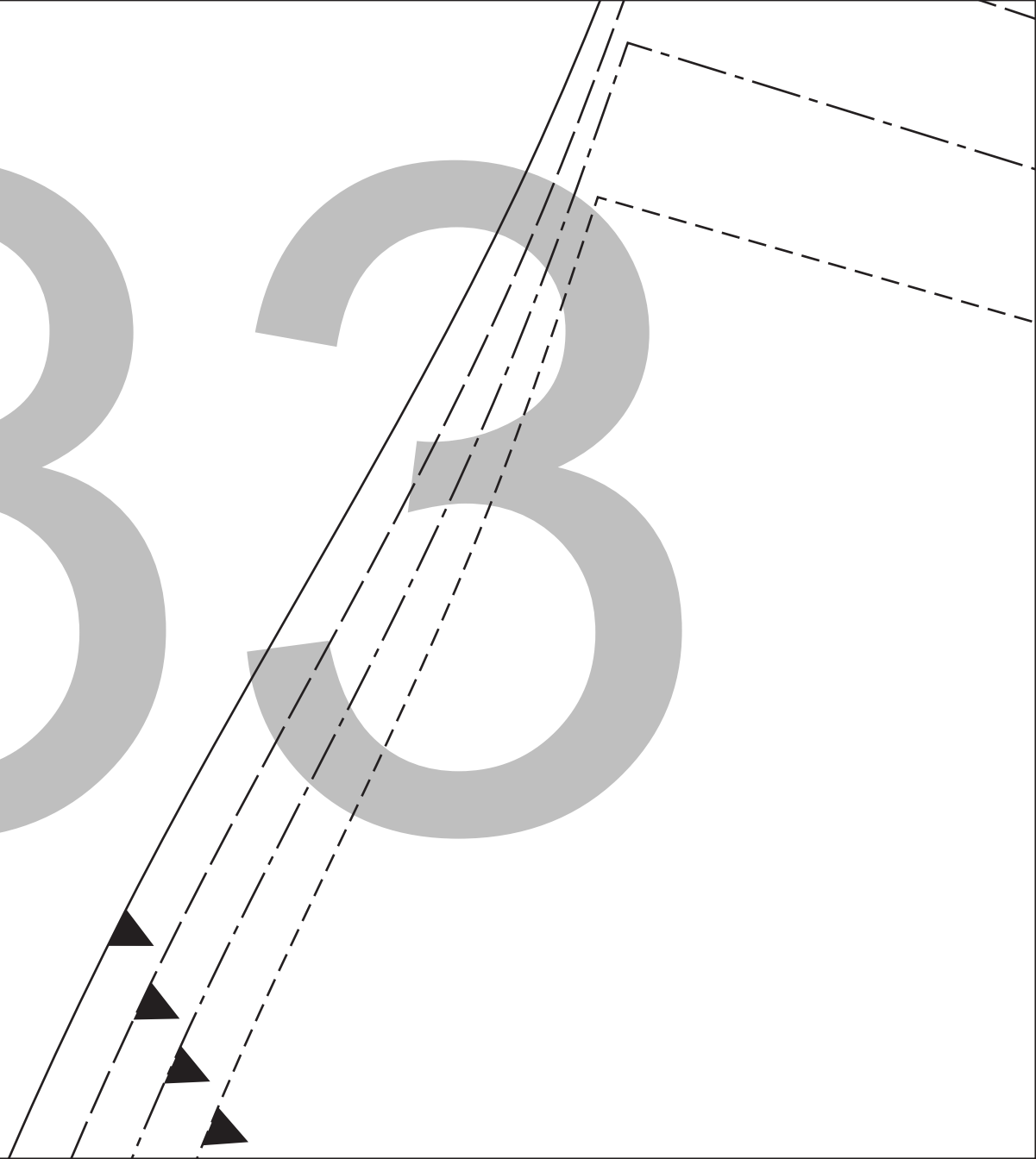


Shoulder



3

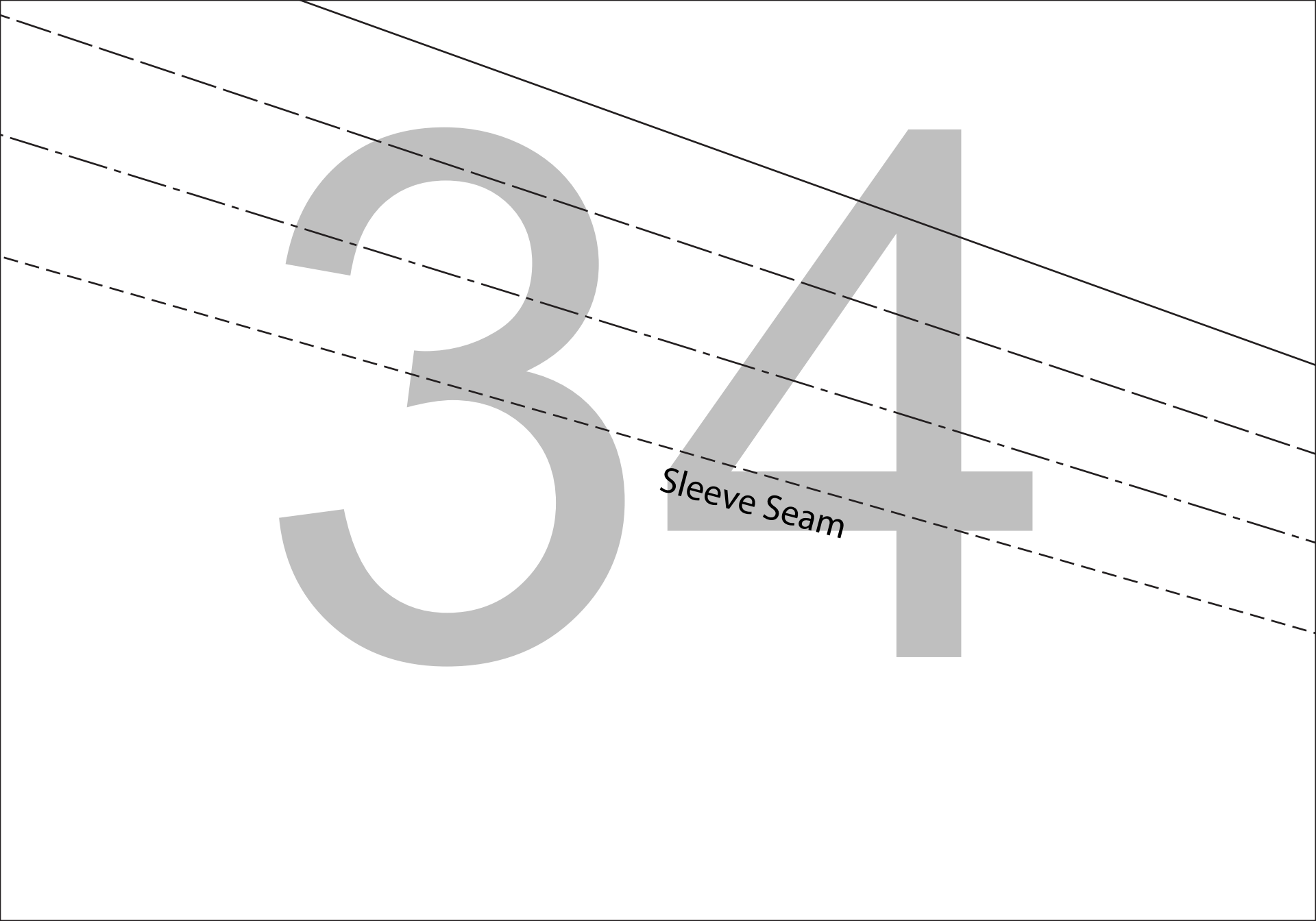
3



3

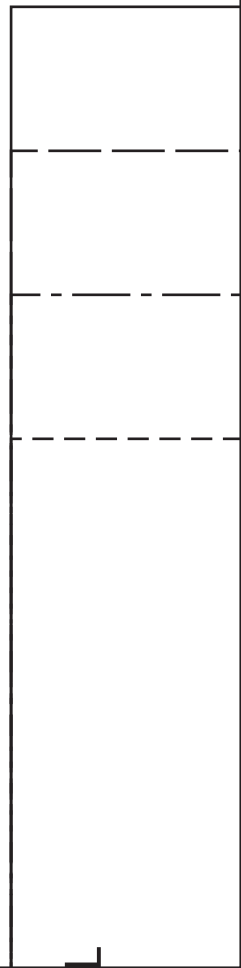
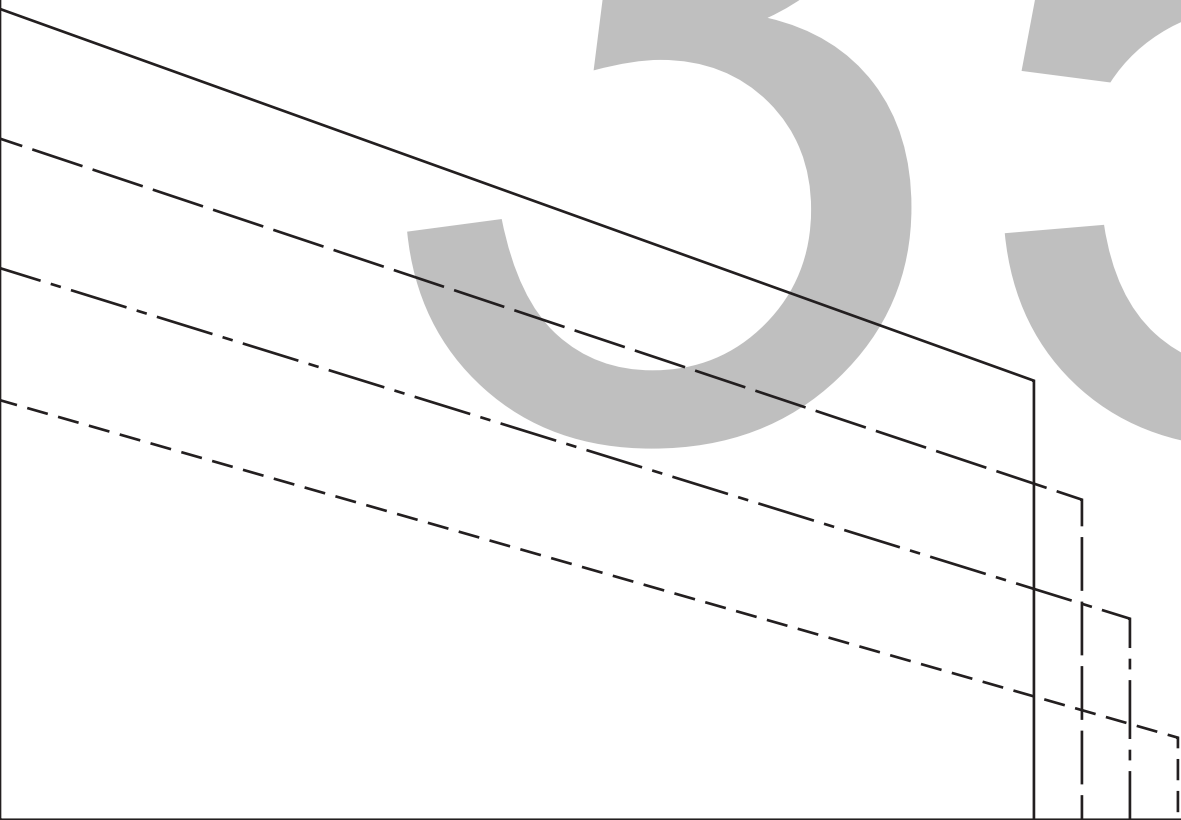
4

*Sleeve Seam*



35

- Size M
- Size L
- Size XL
- Size 2XL



Sex Isolation Gown

ff

2 of Ribbing

1" Seam Allowance

of Stretch

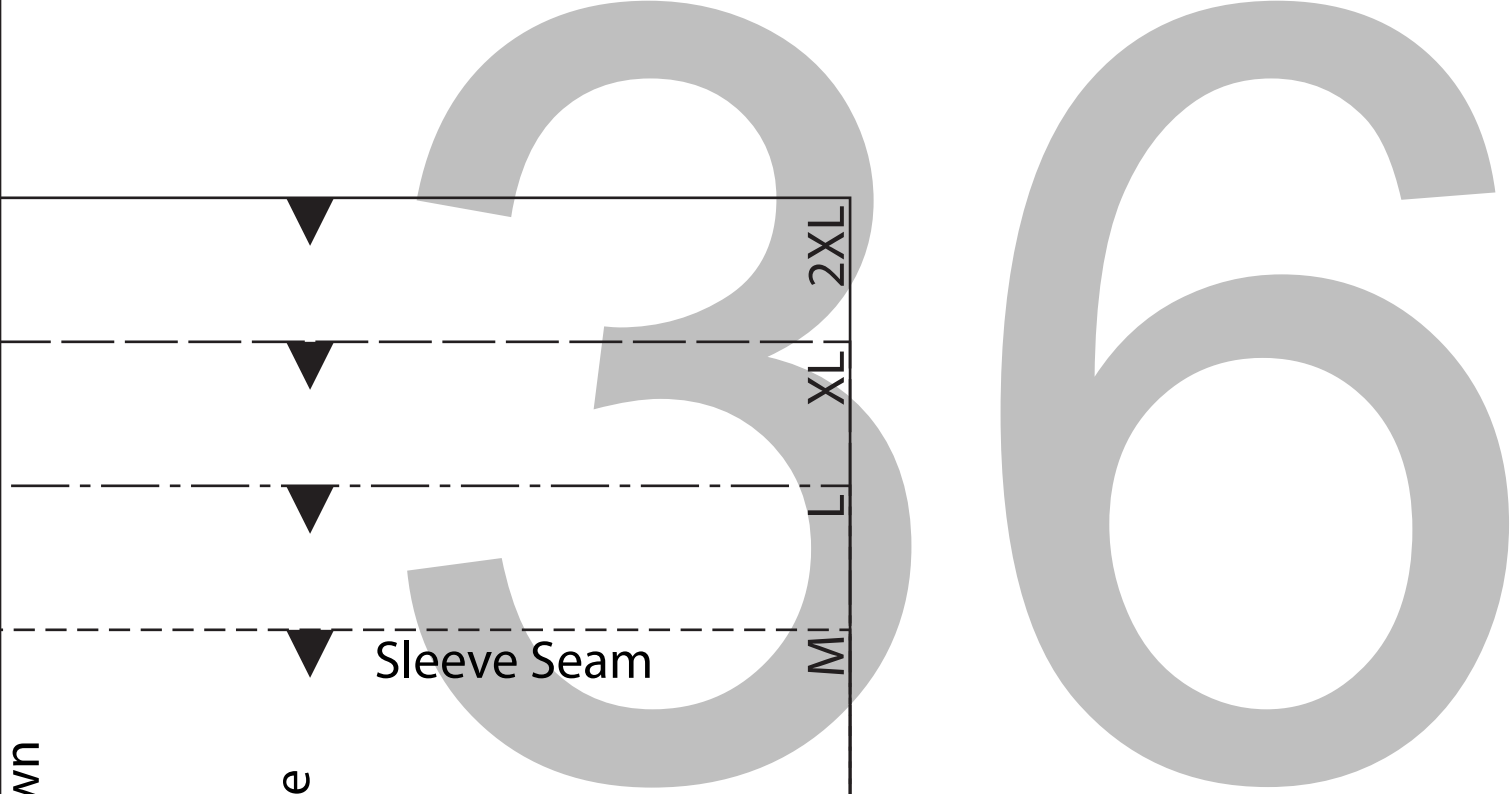
Sleeve Seam

M

L

XL

2XL



37

1/2" Hem Allowed

38





1

Unisex Isolation Gown  
Front

- Cut 1 on Fold

3/8" Seam Allowance

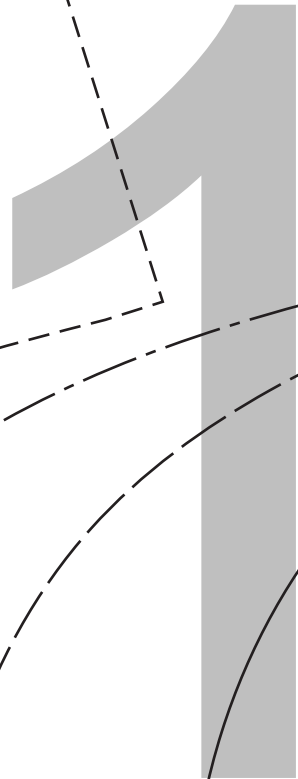
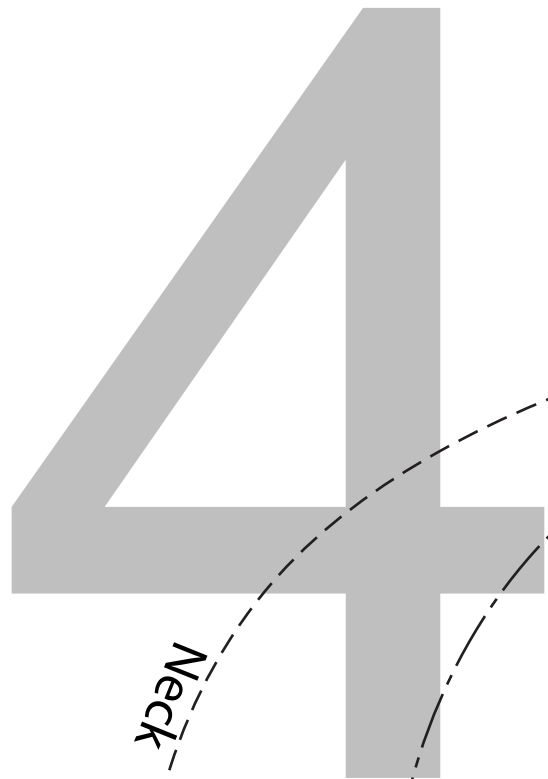
Grain of Fabric

Center Front - Place on Fold

40

A large, bold, gray number '40' is centered on a white background. A thin black horizontal line with a right-pointing arrowhead starts from the middle of the vertical stem of the '4' and extends to the right, passing through the center of the '0'.





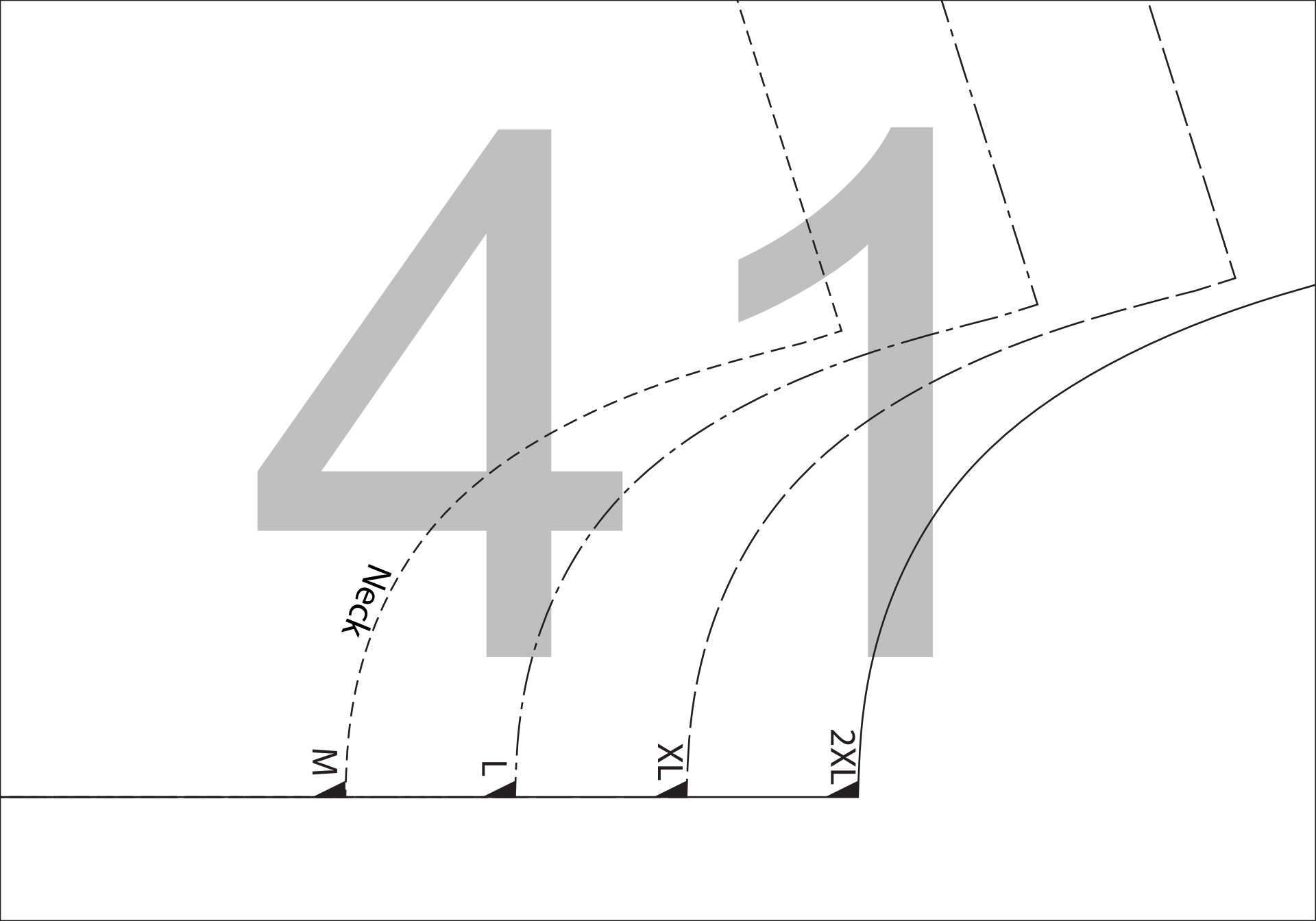
M

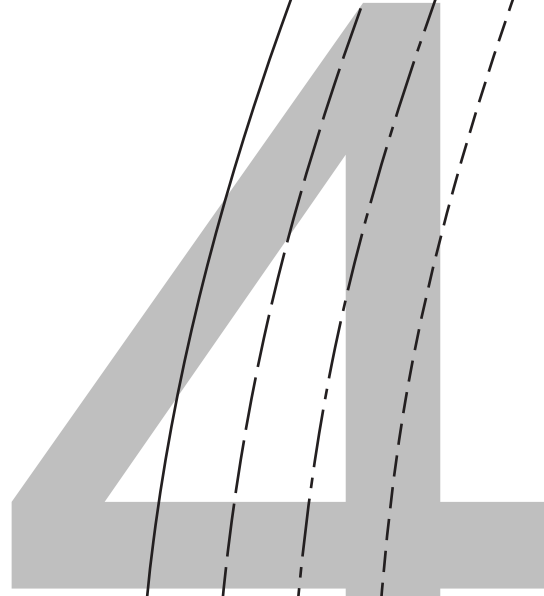
Neck

L

XL

2XL





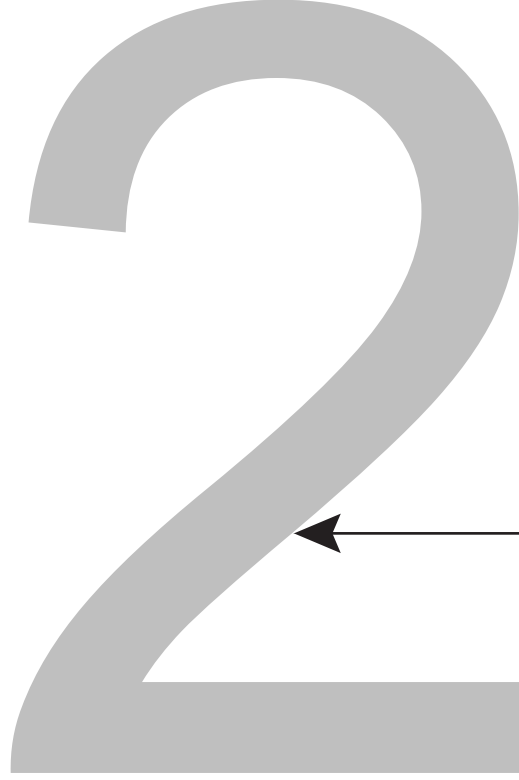
2XL

XL

L

M

Shoulder

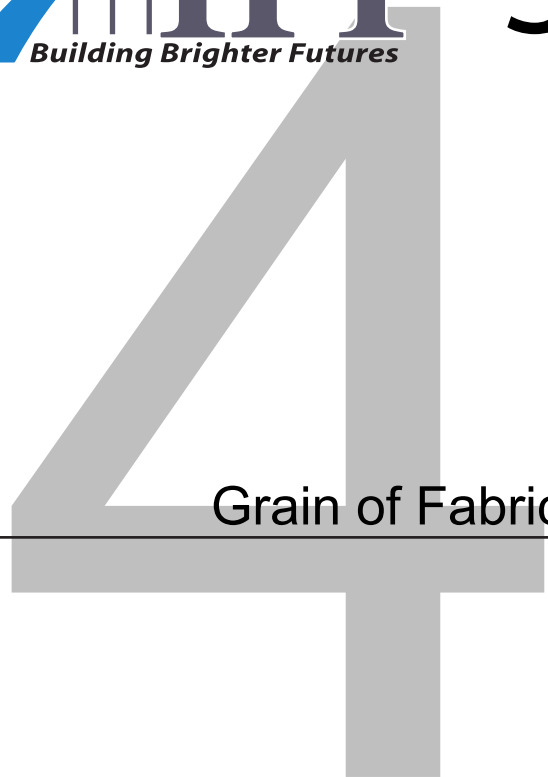




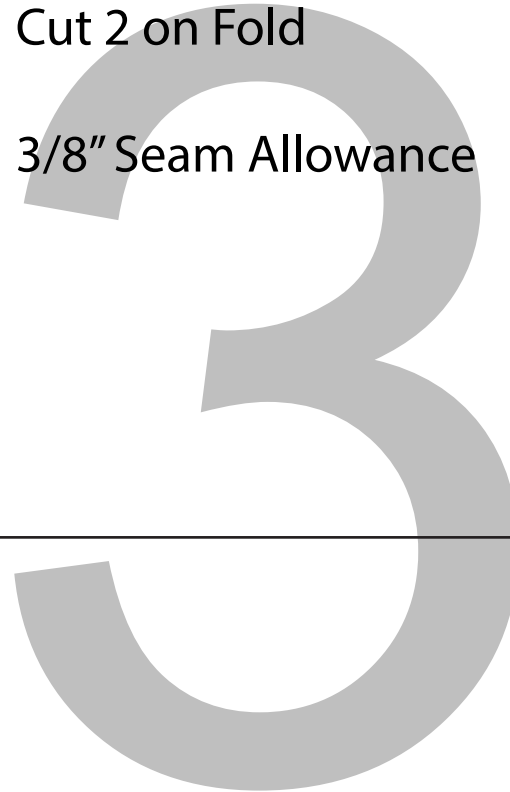
# 3. Unisex Isolation Gown Sleeve

Cut 2 on Fold

3/8" Seam Allowance



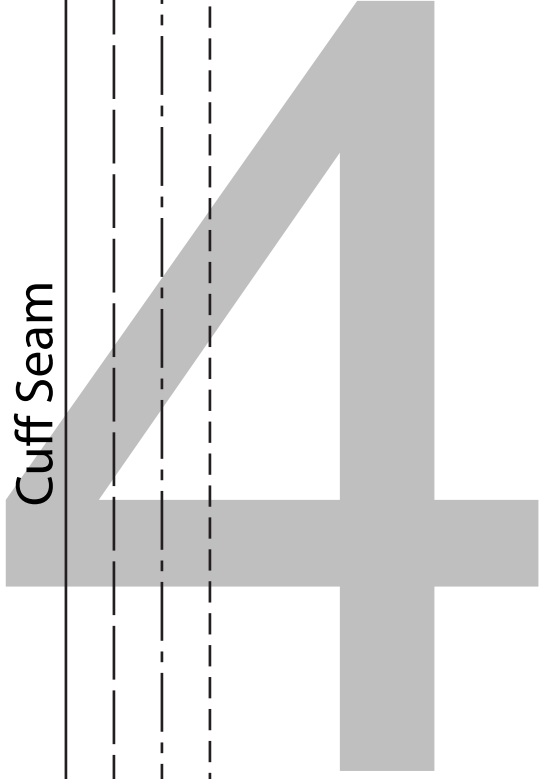
Grain of Fabric



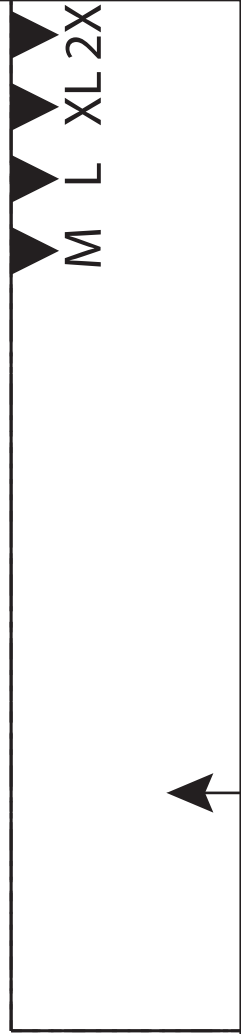
Center of Sleeve - Place on Fold



Cuff Seam



2XL  
XL  
L  
M



M L L 2XL

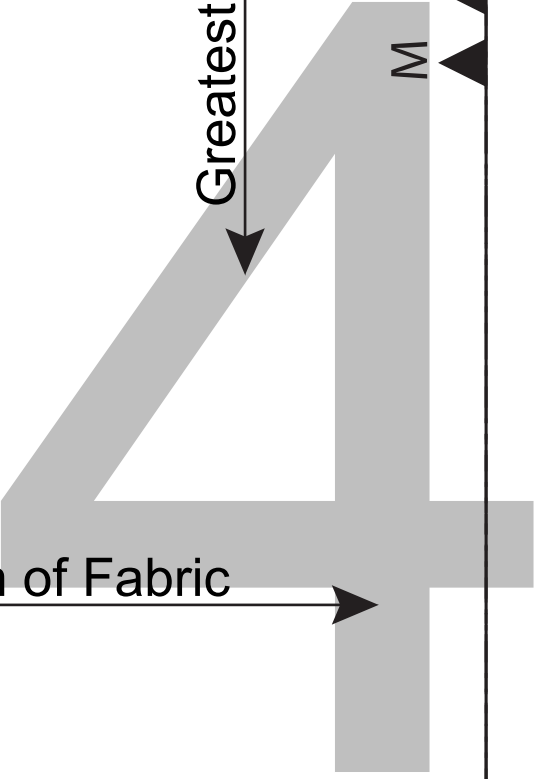




# 4.

Grain of Fabric

Greatest Degree



M

L

XL 2X

Sleeve Seam

