

**FOURTH JUDICIAL DISTRICT  
DEPARTMENT OF CORRECTIONAL SERVICES**



**FISCAL YEAR 2020 ANNUAL REPORT  
JULY 1, 2019 – JUNE 30, 2020**

# MESSAGE FROM THE DISTRICT DIRECTOR

September 23, 2020

Beth Skinner, Director  
Iowa Department of Corrections  
510 E. 12<sup>th</sup> St.  
Des Moines, IA 50319

Director Skinner,

On behalf of the staff of the Fourth Judicial District Department of Correctional Services, I am pleased to present this Department's Fiscal Year 2020 Annual Report. This report provides information about programs in the Fourth Judicial District Department of Correctional Services from July 1, 2019 through June 30, 2020. In addition, this report is submitted for filing with the Board of Supervisors of each county in the Fourth Judicial District, per Section 905.4 of the Code of Iowa.

The Department continues to review operations and programming based on fiscal allowances. Correctional quality improvement measures are being implemented to ensure offenders are being served appropriately to ensure lowered recidivism. Although faced with the many changes and challenges the COVID-19 pandemic brought this year, staff continued to provide solid core services to the community while maintaining public safety.

I want to sincerely thank this Department's staff for their dedication and teamwork during this past year. Our work may have *looked* different, but the outcomes remained consistent with the department's mission.

Sincerely,

*Kip Shanks*

Kip Shanks  
District Director  
Fourth Judicial District  
Department of Correctional Services



# TABLE OF CONTENTS

## Department Overview

Mission and Vision.....	1
Values, Beliefs and Desired Outcomes.....	1
History.....	2
Locations.....	2
Tables of Organization.....	3-4
Board of Directors .....	5
Summary of District Board Meetings.....	5

## Advisory Committee

Victim Advisory Committee .....	6
---------------------------------	---

## Basic Services

Pre-Trial Release .....	7
Pre-Sentence Investigation.....	7
Probation .....	7
Parole .....	8
Residential Facilities (RCF/RTC).....	8-9
Informal Probation .....	9
Interstate Compact .....	9

## Special Programs

Iowa Domestic Abuse Program .....	9
Drug Court.....	9-11
Drug/Alcohol Testing .....	11
Electronic Monitoring/GPS .....	11
High Risk Unit .....	12
Fugitive Investigation Unit .....	12
Intensive Supervision Program.....	12
Operating While Intoxicated Program .....	12-13
Secure Continuous Remote Alcohol Monitor .....	13
Sex Offender Treatment Program.....	13
Technology Assistance Unit .....	13
Transitional Housing.....	13-14
Mental Health Court .....	14
Community Service.....	15

## FY20 Statistical Snapshots (7/1/19 – 6/30/20)

Field Services Snapshot / Field Services Closures .....	16
Pre-trial Interviews by Jurisdiction and Type.....	16
Pre-trial Interviews by Class and Type .....	17
Pre-trial Interviews by Type and Sub-type.....	17
Pre-sentence Investigations by Form Type and Jurisdiction .....	18
Pre-sentence Investigations by Crime Class.....	18
Pre-sentence Investigations by Offense Type .....	18
Pre-sentence Investigations by Offense Sub-type and Type .....	19

**FY20 Statistical Snapshots (7/1/19 – 6/30/20) Continued**

Intervention Program Snapshot / Intervention Program Closures .....20  
Intervention Snapshot .....20  
Intervention Closures ..... 21  
Residential Correctional Facility Snapshot / Closures .....22  
Residential Treatment Center Snapshot / Closures .....23  
Residential Average Daily Population .....23  
Specialty Snapshot / Specialty Closures.....24  
Security Standards – Toxin by Substance and Type .....25  
Security Standards – Non Toxin by Type and Sub-type.....26

**FY20 Financial Reports (7/1/19 – 6/30/20)**

Total Expenditures by Revenue Source .....27  
Total Expenditures by Cost Center .....28  
Offender Fees Collected.....28  
Expenditures by Special Project by Revenue Source .....28  
Total Revenues by Source .....28  
Total Expenditures by Major Cost Center (Orgs).....29

Employee Training..... 30-31  
Prison Rape Elimination Act (PREA) Audits ..... 32  
Income Offset Program .....32  
Employee Information ..... 32-33  
Department Picture .....33  
Website ..... 33



## **MISSION**

Creating Opportunities for Safer Communities

## **COMMUNITY BASED CORRECTIONS VISION**

Iowa Community Based Corrections is a place where:

- Every offender makes it and our communities are safe
- We invest in partnerships so that all members of the community have hope of succeeding
- Individual growth is encouraged and expected, and achievement is recognized
- Shared decision-making and team participation demonstrate our mutual respect
- Offenders are held accountable
- Diversity is our strength
- Innovation is valued
- We measure our results and do what we know works

## **VALUES AND BELIEFS**

- People can change
- Every person should be treated with dignity and respect
- Our efforts help make people safer
- We must work as a team if we are to succeed

## **DESIRED OUTCOMES**

- Safer Communities
- Quality Services
- Accountability for Those Who Have Broken the Law
- Responsible Use of Taxpayer Dollars

## HISTORY

The Fourth Judicial District Department of Correctional Services is an independent public agency created and established under Chapter 905 of the Code of Iowa to provide community correctional services to the nine counties in Southwest Iowa that comprise the Fourth Judicial District.

An early community-based corrections program was established in the Council Bluffs – Pottawattamie County area in the early 1970s funded as pilot projects through the federal Law Enforcement Assistance Act (LEAA). At that time, services were provided by this program as well as by the Division of Corrections within the Iowa Department of Social Services.

In 1977, through innovative legislation passed by the Iowa Legislature, the Fourth Judicial District Department of Correctional Services was established and it assumed all community corrections functions in the District with the exception of state parole and work release, which remained under State control. Also, in 1978 the first District community Residential Correctional Facility was opened in Council Bluffs.



On July 1, 1984, the State Legislature turned over the administration of adult parole and work release to the District Departments of Correctional Services from the Department of Corrections.

## OFFICE LOCATIONS IN COUNCIL BLUFFS

### Administrative Office (A)

801 S. 10<sup>th</sup> St.  
Council Bluffs, IA 51501  
Phone: (712) 396-2200  
Fax: (712) 325-0312

### Field Office (B)

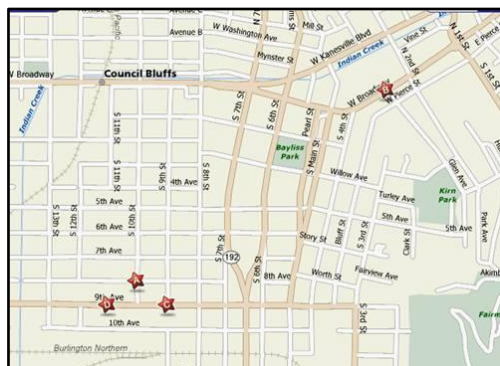
300 W. Broadway, Suite 201  
Council Bluffs, IA 51503  
Phone: (712) 396-2221  
Fax: (712) 322-4113

### Residential Correctional Facility (C)

900 9<sup>th</sup> Ave.  
Council Bluffs, IA 51501  
Phone: (712) 396-2245  
Fax: (712) 329-9115

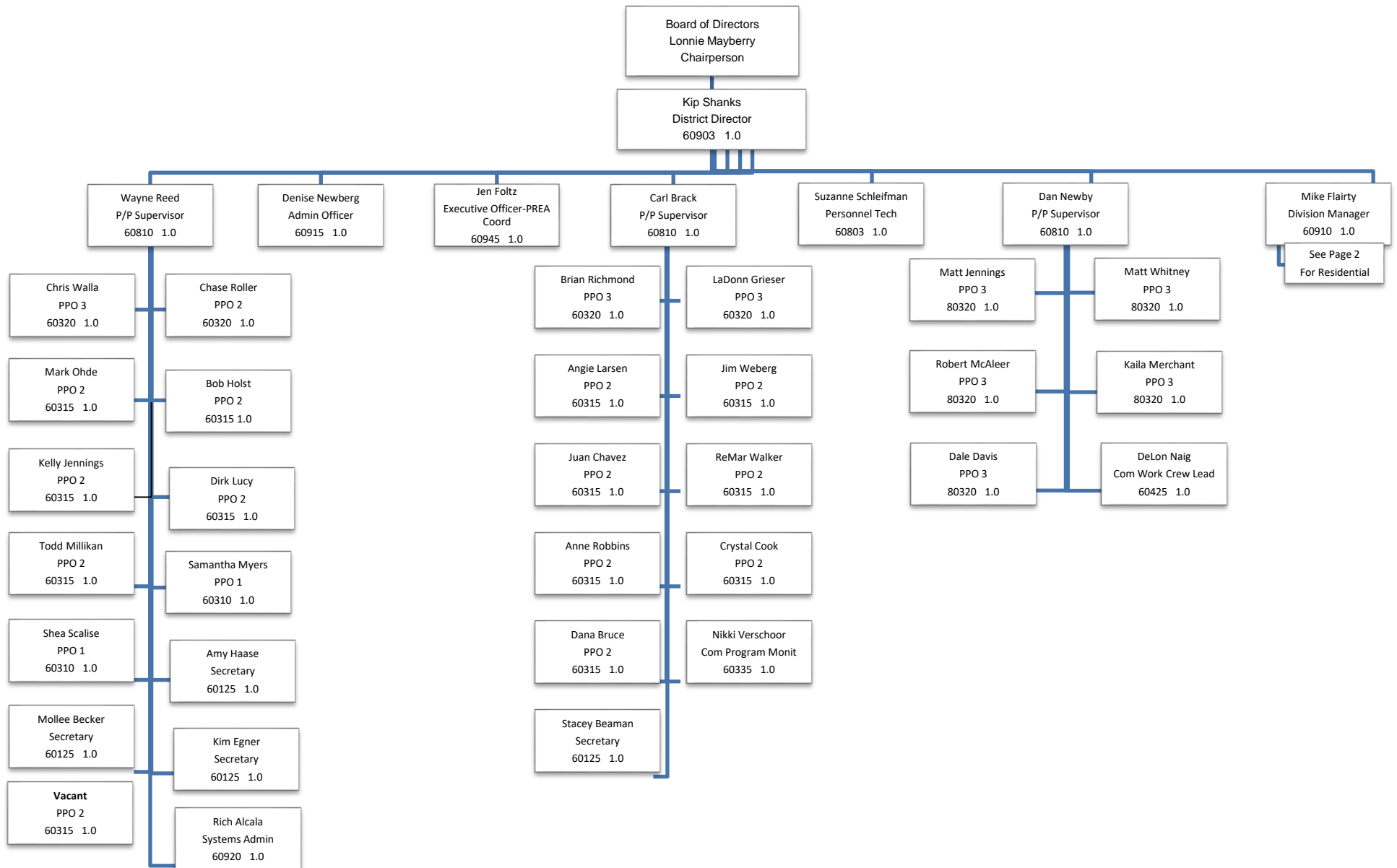
### Residential Treatment Center (D)

1102 9<sup>th</sup> Ave.  
Council Bluffs, IA 51501  
Phone: (712) 396-2216  
Fax: (712) 323-3602

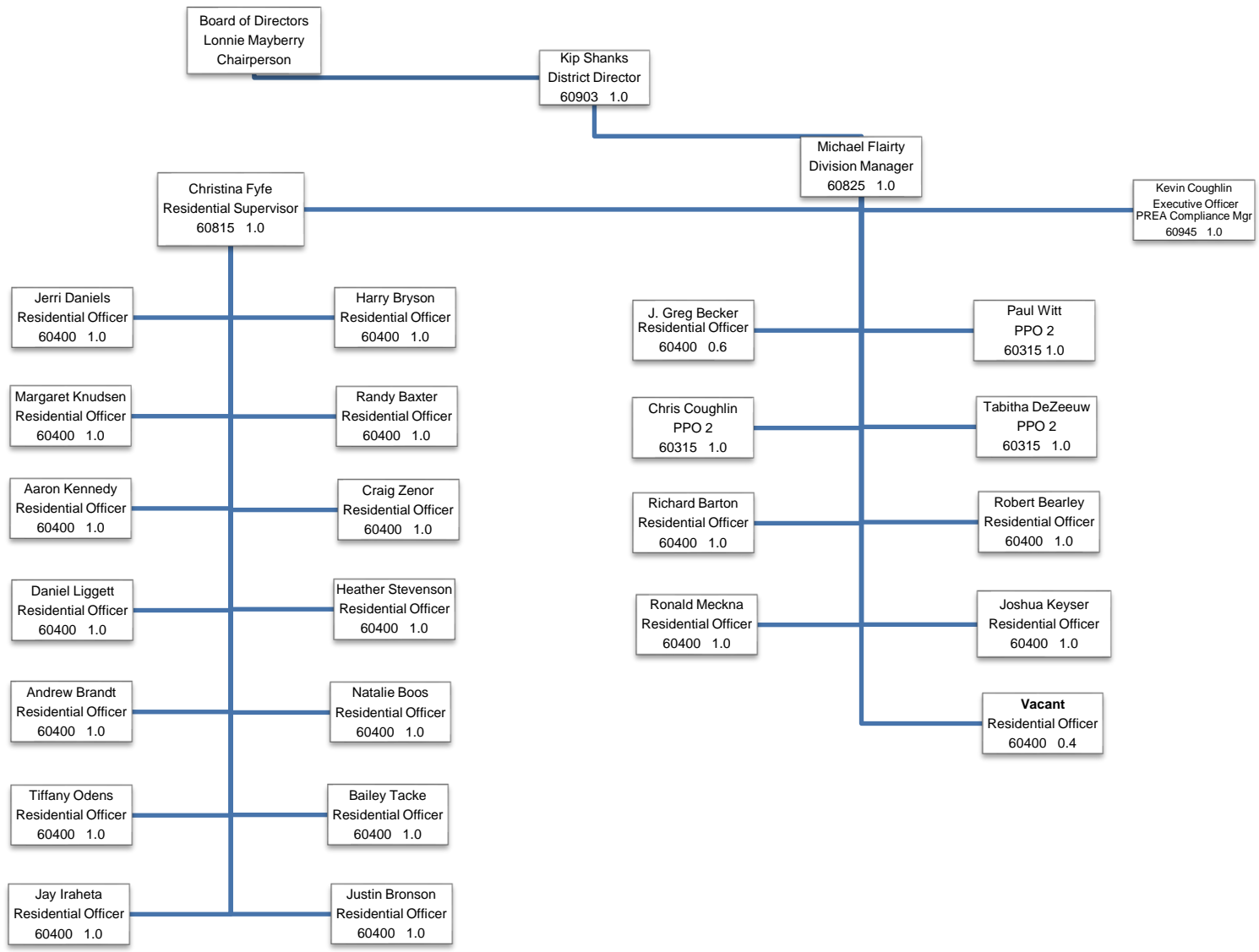


Regional office information and an employee phone directory are located at [www.fourthdcs.com](http://www.fourthdcs.com)

## Table of Organization – Probation / Parole Branches 06/30/2020



## Table of Organization - Residential Branches 6/30/2020





## BOARD OF DIRECTORS

Chairperson:	Lonnie Mayberry, Mills County Supervisor
Vice Chairperson:	Scott Belt, Pottawattamie County Supervisor
At-Large Member:	Alan Armstrong, Page County Supervisor
Citizen Delegate:	Lindsay E. Andersen
Judicial Delegate:	Honorable Kathleen Kilnoski
	Steve Baier, Cass County Supervisor
	Darin Haake, Shelby County Supervisor
	Terry Graham, Fremont County Supervisor
	Mike Olson, Montgomery County Supervisor
	John Straight, Harrison County Supervisor
	Gary VanAernam, Audubon County Supervisor

## SUMMARY OF DISTRICT BOARD OF DIRECTORS MEETINGS

The Board of Directors for the Fourth Judicial District Department of Correctional Services meets at 1:30pm on the fourth Wednesday each January, April, June and September, at the Department's Administrative Office. Copies of the minutes are available upon request. Additional Board information may be found online at [www.fourthdcs.com](http://www.fourthdcs.com).

### The Board of Directors reviewed, discussed and approved the following:

- Board of Directors' Bylaws
- District Director's Annual Performance Evaluation
- District Director's Expense Reimbursement Claims
- Audit of the District's FY19 financial operations in which no deficiencies were found
- FY20 Annual Report
- End of the year financial reports for FY20
- All staff adjustments
- Revised FY20 Budget
- FY21 Budget request
- All monthly budget variance reports
- FY21 Tables of Organization
- FY21 Purchase of Service Agreement between the Iowa Department of Corrections and the Fourth Judicial District Department of Correctional Services; Personnel Classification Manual
- Updated Personnel Policies
- District Director Reports and Board Meeting Minutes

## VICTIM ADVISORY COMMITTEE

In an effort to enhance victim services, the Fourth Judicial District developed a Victim Advisory Committee in 2007. The committee consists of individuals impacted by crime, District employees, personnel from outside agencies and the general public. The principle role of the committee is to offer guidance and support to the management team in all matters related to victim/witness assistance, including program and policy development and implementation. The committee was instrumental in developing two policies and victim notification procedures for Probation/Parole Officers and.

The annual National Crime Victims' Rights Week program was cancelled due to the COVID-19 pandemic. The theme of the week was Seek Justice, Ensure Victims' Rights and Inspire Hope.



Victim Advisory Committee Members: Becky Belt, Auditor's Office, Pottawattamie County; Nichole Curry, Nebraska Juvenile Probation; Jill Kates, Douglas County Attorney's Office; Sara Thomsen, Victim Assistance, Pottawattamie County Attorney's Office; Katie Choquette & Carrie Potter, Catholic Charities/Phoenix House; Steve Weis, Clarinda Correctional Facility; Carolyn Robison, Paula Sass, Pam Taylor and Roxanne Johnson, Community Members; Sakura Yodogawa-Campbell, Sarpy County (NE) Victim Witness Unit; Crystal Cook, Probation/Parole Officer and Jen Foltz, Executive Officer.

## BASIC SERVICES

### Intermediate Criminal Sanctions

This continuum is a sentencing option available to the Court under 901B of the Code of Iowa. The continuum consists of five levels:

- Level 1 – Non community-based corrections sanctions including fines and non-community based supervision
- Level 2 – Probation and Parole
- Level 3 – Quasi-incarceration sanctions including violator's program and residential correctional facility placement and house arrest using electronic monitoring/GPS
- Level 4 – Short-term incarceration, including the violator programs
- Level 5 – Incarceration

The law allows the District authority to make administrative decisions regarding the supervision of community-based offenders within levels 2, 3 and parts of 4.

The continuum:

- Uses a team approach to ensure fair and consistent decisions
- Uses intermediate community-based sanctions
- Provides immediate response to offender needs and accountability for behavior
- Reduces court time needed to conduct revocation hearings

## Program Definitions

The Fourth Judicial District Department of Correctional Services provides comprehensive adult community based corrections programming. Simply, the District provides all correctional services except prison incarceration. All District services and programs are included in a group of intermediate criminal sanctions ranging from no active supervision up to actual prison incarceration. Basic community corrections services are offered in addition to a wide array of special programs and treatment services.

### Pre-trial Release

Pre-trial Release provides an alternative to the traditional bail bond system. Arrestees are assessed for their public safety and flight risk pending disposition of their criminal case. Recommendations are made to the court regarding appropriateness for release from jail that may include release on own recognizance (ROR), release with supervision (RWS), release with bail (RWB), etc., or no release. If release is ordered with supervision, the defendant's whereabouts and activities are monitored to ensure that all court appearances and obligations are met. Identified criminogenic needs are addressed for early intervention.

### Pre-sentence Investigation

This service is a primary tool to assist judges in determining appropriate sentence alternatives that most effectively serve the offender and wisely utilize correctional resources. The report submitted to the district court includes an extensive history of the defendant's criminal, social, family, education, employment and psychological background. Sentencing alternatives are presented to the court based on the investigation. This District also provides criminal history record checks to the courts for the Judge's consideration in sentencing.

### Probation

Probation is the supervised release of adjudicated adult individuals in the community as a result of a suspended sentence, a deferred sentence or a deferred judgment. Probation provides a major alternative to institutionalization whereby convicted misdemeanants and felons remain in the community under supervision. Probation supervision includes risk and needs assessments, case planning and referral to community agencies. Offender behavior is monitored through urinalysis testing, breath analysis, electronic monitoring/GPS, surveillance and collateral contacts. Officers maintain regular contact with the offender, their family and/or significant others, their employer, treatment agencies, etc.

## Parole

Parole is the supervised conditional release of offenders released from the state's correctional institutions by the Board of Parole. Parole can also be granted directly from a Residential Correctional Facility after the offender has served residential facility time on work release. This program is very similar to probation and in many instances the probation and parole officers are one and the same.

## Residential Facility Services

Residential services provide supervision of offenders demonstrating an inability or unwillingness to function under less restrictive program supervision. Work Release services provide offenders a transitional period to become adjusted to working and living in the community after incarceration.

There are two residential facilities in the Fourth Judicial District. The residential facilities provide highly structured, live-in supervision of problematic, high risk and/or high needs offenders.

A myriad of treatment, education and related services are available to offenders. The offenders are sentenced by the court, parolees or work releaseses from one of the nine state penal institutions.

The District opened its first Residential Correctional Facility (RCF) with male offenders in February, 1977 at 900 South 7<sup>th</sup> Street in Council Bluffs, Iowa. In February, 1984, the facility moved to its present location at 900 9<sup>th</sup> Avenue as a co-ed facility.



Residential Correctional Facility (RCF)

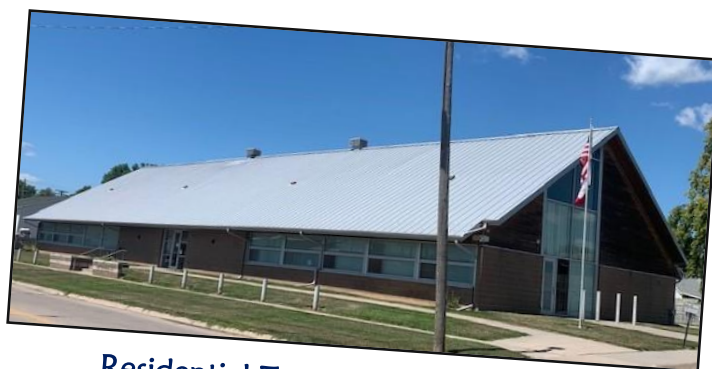
The Residential Correctional Facility (RCF) is located at 900 9<sup>th</sup> Avenue and houses male and female offenders.

The RCF can house sixty-one (61) male offenders and sixteen (16) female offenders.

The average stay is between three (3) and six (6) months.

The Residential Treatment Center (RTC) is located at 1102 9<sup>th</sup> Avenue in Council Bluffs and houses male sex offenders and male offenders going through the Operating While Intoxicated Program.

The RTC can house forty-six (46) male offenders and the average stay is between three (3) and six (6) months.



Residential Treatment Center (RTC)

The District opened the Residential Treatment Center (RTC) on August 18, 2003 as a Women's Residential Correctional Facility. In the fall of 2012, a wing at the RCF was renovated to house female offenders. The Women's Residential Correctional Facility then re-opened as a Residential Treatment Center housing all offenders sentenced on a sex offense in the Fourth Judicial District for an initial diagnostic and evaluation period. The OWI offenders moved from the RCF to the RTC on January 15, 2015.

Offenders are required to obtain employment and address treatment needs as directed by the court or identified by evaluation which is required due to past and current alcohol or drug offenses. Offenders are required to meet financial obligations such as child support, victim restitution, court costs, etc. Additional residential information is available at <http://www.fourthdcs.com/residential-information.html>.

## **Informal Probation**

The Informal Probation program began on January 1, 2014, and is a program primarily intended for first-time or low-risk offenders. Offenders supervised on Informal Probation are responsible for completing all court-ordered requirements, including all financial obligations associated with the case(s). Even though the Court places an offender on Informal Probation for a period of time, they may be discharged once verification of all completed court-ordered conditions is received by the Department.

## **Interstate Compact**

Interstate Compact is the transfer of an offender's supervision between states. Offenders supervised are usually on probation or parole and are handled similar to Iowa offenders under supervision. In addition, courtesy pre-sentence investigations are performed for and by other states upon request.

## **SPECIAL PROGRAMS**

### **Iowa Domestic Abuse Program (IDAP)**

The Iowa Domestic Abuse Program (IDAP), formerly known as Batterer's Education Program (BEP), provides a group education process for men and individual programming for women who practice a pattern of abusive behavior. As required by Iowa law, the District provides domestic abuse groups for persons convicted of domestic abuse, persons referred from other agencies and volunteers. After an intake/orientation session, offenders are placed in groups which meet weekly for twenty-four (24) weeks. Transitional Services of Iowa, Inc. provides the groups in the community. Information on group locations is located at <http://www.fourthdcs.com/idap.html>.

### **Drug Court**

Drug Court is a problem-solving specialty court with the responsibility of handling cases involving drug-using offenders with the capability of comprehensive supervision, drug testing, treatment services and immediate sanctions and incentives. It is a diversion program designed to divert non-violent

substance abusing offenders from the criminal justice system into treatment and rehabilitative programming. The Drug Court team consists of a District Court Judge, Assistant County Attorney, defense attorney, probation/parole and law enforcement.

The Fourth Judicial District's Drug Court has been operating since January 3, 2000. Drug Court convenes every Wednesday morning following a team conference reviewing each participant's progress. The Drug Court program is a minimum of eighteen (18) months and has four phases, including an intensive treatment continuum with weekly interaction with each participant. The Drug Court is a post adjudication model. Following a plea by the offender, the offender is "sentenced" to Drug Court to fully comply with the program. Failure to do so may result in serving the initial sentence. Successful completion of the program will result in a dismissal of the criminal offense.

The participants may elect to withdraw their plea within the first four (4) weeks, or prior to the completion of inpatient treatment, whichever is longer, and the team may return the participant to the criminal docket to stand trial during that period. Upon transfer of the offender to Drug Court, further proceedings in criminal court are stayed pending final disposition of each case.

Non-violent drug offenders and drug related offenders are eligible for Drug Court. This includes offenders manufacturing for themselves to support their addiction and probation violators. A history of violence, including domestic abuse, possession or use of weapons or a history of severe mental problems may be excluding factors for admission into the program. Drug dealers, large-scale manufacturers and sex offenders are not eligible for Drug Court.



All applicants must be screened prior to being accepted. A Substance Abuse Subtle Screening Inventory (SASSI 4) and Iowa Risk Revised Assessment are utilized to assess the offender.

#### Drug Court Team

Left to Right: Defense Attorney Brad Davis, PPO Kelly Jennings, Judge Greg Steensland, Supervisor Wayne Reed Pottawattamie County Prosecuting Attorney Brett Wessels and Council Bluffs Police Officer Brian Hamilton

### **Sanctions**

Drug Court uses an escalating series of sanctions consistent with the Iowa Code and Policy 119, Intermediate Sanctions. Actions are immediate, related to the offense, start with the least intrusive, not imposed in anger or for reasons other than to obtain a change in behavior, with alternative positive behaviors provided following the sanction. In the imposition of sanctions, awareness of the "law of unintended consequences" is kept in mind. The goal is long-term change extending beyond graduation from Drug Court.

### **Cognitive Model**

Drug Court follows the cognitive approach in dealing with offenders. Drug Court offenders keep journals and complete other written exercises in treatment programs to address behavioral and attitudinal issues.

## Drug Court Goals

- Reduce recidivism among drug offenders by employing the most effective use of existing resources for substance abuse treatment.
- Alter lifestyle of the offender to return them to productive and sober citizenship.
- Present effective alternatives to prison overcrowding and early release issues.
- Create a program which restores confidence in the courts and correctional services while saving dollars for the citizens of our city and county.

## Drug/Alcohol Testing

Drug and alcohol-free offenders are an important aspect of the Districts programs. The District conducts urinalysis testing on a regular basis. The District arranges for laboratory backup testing on cases where serious violations are found. The District also has on-site alcohol testing equipment available and conducts frequent tests on suspected alcohol abusers.

Test Type	Negative	Positive	Total
Blood Test		1	1
Breath Analysis	6,456	88	6,544
Saliva Test	3,053	122	3,175
Sweat Patch	25	1	26
Urinalysis	63,264	1,515	64,779
<b>Total</b>	<b>72,798</b>	<b>1,727</b>	<b>74,525</b>

## Electronic Monitoring and GPS

Electronic Monitoring is an adjunct to other community based correctional supervision and treatment. The goal of this program is to monitor compliance with offender movements in the community to enhance public safety. The District is utilizing the latest innovations in electronic surveillance to more effectively monitor high risk offenders. The District currently uses active monitoring units, mostly utilized by the High Risk Unit officers.

Global Positioning Satellite (GPS) is an innovative electronic surveillance technology used by criminal justice agencies. The system combines GPS technology and advanced wireless communication protocols, flexible reporting and unique mapping capabilities to effectively track offenders twenty-four (24) hours a day, seven (7) days a week.

The District's GPS equipment is used to monitor offenders' whereabouts at all times. The Central Command Center (CCC), located in Des Moines, is alerted when an offender is in violation of the GPS rules or is experiencing equipment issues that require immediate attention. If immediate action is needed, the CCC will contact designated District staff to respond accordingly. Utilization of GPS by District staff can enhance public safety while maintaining offender accountability. As of June 30, 2020, there were forty-one (41) offenders being supervised by GPS.

## **High Risk Unit**

The High Risk Unit (HRU) is a special public safety unit established within the Department. High risk offenders include those convicted of violent crimes or having a history of violent crimes. Sex offenders are also considered to be high risk and are supervised by HRU Officers. The HRU is staffed with Intensive Supervision Officers, Sex Offender Officers, Surveillance Officers and Fugitive Investigators. The District Director is designated as Chief of this public safety unit. The HRU includes sworn officers who have been trained and certified by the Iowa Law Enforcement Academy or qualify under IAC 40.4 (12). The HRU has recently been involved with fugitive captures, assisting other agencies on special enforcement projects, computer searches, task force operations and seizures of firearms and narcotics. Members of the HRU also educate the community on the role of the unit at various speaking engagements each year.

## **Fugitive Investigation Unit**

The District developed a Fugitive Investigation Unit in June, 1997, as a response to work overloads in most law enforcement agencies because their personnel did not have time to dedicate to the pursuit of correctional offenders for whom active arrest warrants existed. Selected staff members from the Intensive Supervision Unit comprise the Fugitive Investigation Unit. The Fugitive Investigation Unit is responsible for investigating the whereabouts and locating all probation, parole, work release and sex offender absconders who have valid warrants. The Fugitive Investigation Unit works in cooperation with all local, state and federal law enforcement agencies and has served thousands of felony warrants since its inception.

## **Intensive Supervision Program**

The Intensive Supervision Program (ISP) is a specialized program of greatly enhanced supervision of high risk offenders on probation or parole. Specialized Probation/Parole Officers are assigned a small caseload of high risk offenders to supervise. Instead of having face-to-face contact with the offender monthly under normal supervision, ISP officers have numerous contacts with the offender weekly. Drug testing, curfew surveillance and offender accountability are emphasized with most officer activity occurring in the evening. Officers are equipped with a vehicle, police equipment and electronic monitoring equipment. High risk offenders include those convicted of violent crimes or having a history of violent crimes. Sex offenders are also considered to be high risk and are supervised by ISP officers.

ISP may also be used as an intermediate sanction for non-compliant offenders on regular supervision caseloads. ISP caseloads are held to a maximum of twenty-five (25) offenders so the officer can spend more time with each offender. ISP officers visit these offenders on the weekends and evenings, as well as during the day. The time spent with the offender can be in helping the offender change, or if the offender is unwilling to change, to monitor the offender for compliance.

## **Operating While Intoxicated Program**

An intense substance abuse treatment program is provided to all offenders serving a sentence for O.W.I. 2<sup>nd</sup> or subsequent offenses.



Offenders are required to attend weekly twelve (12) step meetings, obtain a sponsor and maintain full time employment. Failure to comply at the community level may result in prison incarceration.

## **Secure Continuous Remote Alcohol Monitor (SCRAM)**

The District is using the Secure Continuous Remote Alcohol Monitor (SCRAM) on offenders which provides 24/7 alcohol detection with house arrest technology. The SCRAM program assists with offender accountability, public safety and rehabilitation of the offender. The program is designed to aid offenders currently engaged in substance abuse treatment who require additional monitoring and accountability.

## **Sex Offender Treatment Program**

The Sex Offender Treatment Program (SOTP) is designed to provide treatment to offenders who commit sex crimes. The program involves assessment, evaluation and specialized treatment groups. In addition to the treatment program these offenders are monitored on a specialized caseload. The goal of the SOTP is to reduce the risk of further sexual victimization through participation in the treatment program and intensive supervision. The treatment program utilizes the Good Life Model, a strength based approach with focuses on identification of risk factors and emotional regulation. Polygraph examinations are also used as a treatment tool to assist offenders to take responsibility for their deviant thoughts and behaviors.

The District opened a Residential Treatment Center (RTC) in the fall of 2012. All sex offenders in the District are initially evaluated and risk assessed at the RTC. This allows for a thorough evaluation of all offenders prior to community placement and reduces the likelihood of high risk offenders being prematurely placed into the community.

## **Technology Assistance Unit**

The Technology Assistance Unit is comprised of specially trained HRU Officers who assist other Probation/Parole Officers and outside Law Enforcement agencies in technology issues involving computers, computer related equipment and cell phones. The Technology Assistance Unit can conduct computer examinations and cell phone examinations using the latest techniques and equipment.

## **Transitional Housing**

In December, 2014 the Department began accepting residents into the newly renovated private residence that was purchased with the assistance of grant funds. The Department purchased the residence to support community reentry of offenders by addressing one of the major barriers faced by offenders – suitable housing. In addition, offenders who received disability benefits prior to incarceration have a 2-3 month waiting period before their benefits are reinstated after being released from prison.



These individuals are not eligible to have their benefits reinstated if they are living in a residential correctional facility, therefore work release is not an option for these offenders. The house provides these offenders a place to reside until their benefits are reinstated and then they can transition into housing of their own.

Admission criteria includes the following: nonviolent, male offenders who are unable to work and/or were on disability prior to incarceration. Sex offenders are eligible for placement if they meet the above criteria and are approved by the Sex Offender Review Team. Offenders may live in the house until their disability benefits are reinstated, approximately 60-90 days. Offenders are required to pay a minimal monthly rent fee to reside at the house.

## Mental Health Court

The 4<sup>th</sup> Judicial District has been operating a collaborative mental health court to serve the counties in Southwest Iowa since January, 2015. The incentive is that if they successfully complete the program, they may be granted a deferred judgment at the time of sentencing, if they are eligible, with no sentence being imposed. If current probation offenders are pending violation, the court may evaluate their case for admission. If this is the case, their original sentence remains in place. Admission is based on a number of factors with priority given to the nature of the mental health diagnosis.

Offenders are required to navigate four phases of the court to graduate. Misdemeanant offenders must complete the requirements during a one year term of probation and felony offenders admitted to the program have two years to complete the conditions set forth by the court. As of June 30, 2019, the program has had twenty-four graduates since it's inception. Currently, there are eighteen offenders participating in the program and the team continues to evaluate potential candidates on a weekly basis. The mental health court focuses on identifying and assisting clients in areas of need such as mental health services, housing, medication and transportation. The court aims to address the needs of offenders whose mental illness has been a contributing factor in their criminal behavior.

Several agencies are participating in the operation of the court, including the 4<sup>th</sup> Judicial District Judiciary, Southwest Iowa MSDS Region, Pottawattamie County Sheriff's Office and Jail, Heartland Family Service, Department of Correctional Services Probation/Parole, Pottawattamie County Attorney's Office, State Public Defender's Office, Council Bluffs Police Department and Pottawattamie County Community Services.

### Mental Health Court Team

Back row L-R: Daltynn Brockman (HFS therapist), Lonnie Maguire (MH Court CM Supervisor), Lauren Christensen (HFS Bridges), Brian Richmond (Probation Officer), Kerrie Snyder (Pottawattamie Co Assist Co Attorney), Lindsay Henderson (HFS Therapist) and Travis Jarzynka (CBPD)

Front row L-R: Tricia Jones (Pott Co Jail), Judge Mark Eveloff (MH Court Judge), Shelly Hovey (MH Court Case Manager)



## Community Service

The District provides an opportunity for offenders to pay retribution to their community in the form of volunteer work. Supervised by a work crew leader, these offenders work in various capacities in Pottawattamie County recreational and public works facilities. Projects include park, city, county maintenance and other non-profit organizations. The work holds offenders accountable for their crimes as well as gives them a feeling of ownership to their community.

Community service also provides an opportunity to train offenders on various types of trades and educates them with different types of skills. This is very beneficial for the offender to help with employment placement in the future. To qualify for completion of a project, an agency or organization must submit a request for assistance in completing a project that is non-funded. Community service does not replace agency staff, but supplements non-funded needs. Materials and construction resources must be provided by the community agency.

## Field Services Snapshot

Supervision Status	Active at Start	New Admits	Closures	Active at End	Offenders Served
Interstate Compact Parole	23	18	15	27	41
Interstate Compact Probation	119	82	108	97	201
Parole	202	193	145	235	395
Pretrial Release With Supervision	30	62	47	35	92
Probation	1,673	1,035	1,285	1,461	2,708
Special Sentence	59	6	20	60	65
<b>Total</b>	<b>2,106</b>	<b>1,396</b>	<b>1,620</b>	<b>1,915</b>	<b>3,502</b>

## Field Services Closures

Supervision Status \ Reason For Change	Administrative	Intermediate Sanction	Successful	Unsuccessful	Total
Interstate Compact Parole	10		4	1	15
Interstate Compact Probation	51		57		108
Parole	2	27	61	55	145
Pretrial Release With Supervision	4		43		47
Probation	185		817	283	1,285
Special Sentence	1	3	9	7	20
<b>Total</b>	<b>253</b>	<b>30</b>	<b>991</b>	<b>346</b>	<b>1,620</b>

## Pre-Trial Interviews by Jurisdiction and Type

	Non-Compliant	Regular	Total
Audubon		1	1
Cass		7	7
Fremont		5	5
Harrison		2	2
Montgomery		1	1
Page		1	1
Pottawattamie	1	695	696
Shelby		2	2
<b>Total</b>	<b>1</b>	<b>714</b>	<b>715</b>

## Pre-trial Interviews by Class and Type

	Non-Compliant	Regular	Total
A Felony		3	3
B Felony		96	96
Felony - Enhancement to Original Penalty		2	2
C Felony		97	97
D Felony		245	245
Aggravated Misdemeanor		222	222
Serious Misdemeanor		21	21
Simple Misdemeanor	1	8	9
None		20	20
	1	714	715

## Pre-trial Interviews by Type and Subtype

	Violent	Property	Drug	Public Order	Other	None	Total
Alcohol				2			2
Arson		6					6
Assault	180						180
Burglary		67					67
Drug Possession			10				10
Flight/Escape				5			5
Forgery/Fraud		31					31
Kidnap	7						7
Murder/Manslaughter	12						12
None						20	20
Other Criminal					6		6
Other Government					2		2
Other Public Order				23			23
Other Violent	29						29
OWI				17			17
Robbery	16						16
Sex	31						31
Theft		129					129
Traffic				20			20
Trafficking			68				68
Vandalism		20					20
Weapons				14			14
	275	253	78	81	8	20	715

## Pre-sentence Investigations by Form Type and Jurisdiction

Jurisdiction	Long	Short	Total
Audubon	2	7	9
Cass	7	31	38
Fremont	2	47	49
Harrison	1	58	59
Mills	1	131	132
Montgomery		42	42
Page		87	87
Pottawattamie	9	497	506
Shelby	1	48	49
Unknown		1	1
<b>Total</b>	<b>23</b>	<b>949</b>	<b>972</b>

## Pre-sentence Investigations by Crime Class

Crime Class	Total
B Felony	23
Felony - Enhancement to Original Penalty	6
C Felony	150
D Felony	252
Aggravated Misdemeanor	128
Serious Misdemeanor	410
Simple Misdemeanor	2
Unknown	1
<b>Total</b>	<b>972</b>

## Pre-sentence Investigations by Offense Type

Offense Type	Total
Violent	156
Property	181
Drug	242
Public Order	379
Other	13
Unknown	1
<b>Total</b>	<b>972</b>

## Pre-sentence Investigations by Offense Sub-type and Type

Offense Sub Type	Violent	Property	Drug	Public Order	Other	Unknown	Total
Alcohol				1			1
Arson		3					3
Assault	90						90
Burglary		54					54
Drug Possession			115				115
Flight/Escape				1			1
Forgery/Fraud		38					38
Kidnap	3						3
Murder/Manslaughter	9						9
Other Criminal					12		12
Other Drug			6				6
Other Public Order				10			10
Other Violent	28				1		29
OWI				316			316
Prostitution/Pimping				1			1
Robbery	8						8
Sex	18						18
Theft		74					74
Traffic				30			30
Trafficking			121				121
Vandalism		12					12
Weapons				20			20
Unknown						1	1
<b>Total</b>	<b>156</b>	<b>181</b>	<b>242</b>	<b>379</b>	<b>13</b>	<b>1</b>	<b>972</b>

## Intervention Program Snapshot

Intervention Program	Active at Start	New Admits	Closures	Active at End	Offenders Served
Drug Court Program	28	13	19	21	41
Iowa Domestic Abuse Program	46	50	57	38	96
OWI Program	2		2		2
Sex Offender Program	61	30	28	61	91
Sex Offender Registry Modification Evaluation – Adult On Supervision	1			1	1
<b>Total</b>	<b>138</b>	<b>93</b>	<b>106</b>	<b>121</b>	<b>231</b>

## Intervention Program Closures

Intervention Program / Closure Category	Administrative	Intermediate Sanction	Successful	Unsuccessful	Total
Drug Court Program	2		9	8	19
Iowa Domestic Abuse Program	3		51	3	57
OWI Program			2		2
Sex Offender Program	10	1	6	11	28
<b>Total</b>	<b>15</b>	<b>1</b>	<b>68</b>	<b>22</b>	<b>106</b>

## Intervention Snapshot

Internal Intervention	Active at Start	New Admits	Closures	Active at End	Offenders Served
ACTV-Achieving Change Through Value-Based Behavior-Council Bluffs		40	18	22	40
Drug Court - Case Management-Council Bluffs	26	12	16	21	38
Drug Court Group - Council Bluffs	21	11	14	17	32
Drug Court Social Activities - Council Bluffs	23	9	13	18	32
Sex Offender-Maintenance Treatment-Council Bluffs	12	27	15	24	39
Sex Offender - Primary Treatment	1			1	1
Sex Offender - Psychosexual Evaluation – CB	11	16	21	5	27
Sex Offender - Sexual History Polygraph – CB		6	6		6
SOTP - CVSA Sexual History		2	2		2
SOTP - CVSA Specific Issue Maintenance		35	35		35
SOTP - GOOD LIVES	32	25	38	19	57
Thinking for a Change - Council Bluffs		14	14		14
<b>Total</b>	<b>126</b>	<b>197</b>	<b>192</b>	<b>127</b>	<b>323</b>



## Intervention Closures

Intervention / Closure Category	Administrative	Intermediate Sanction	Successful	Unsuccessful	Total
ACTV-Achieving Change Through Value-Based Behavior - Council Bluffs	4	7		7	18
Drug Court - Case Management - Council Bluffs	3		9	4	16
Drug Court Group - Council Bluffs	2		9	3	14
Drug Court Social Activities - Council Bluffs	2		7	4	13
Sex Offender - Maintenance Treatment – CB	1	5	9		15
Sex Offender - Primary Treatment					
Sex Offender - Psychosexual Evaluation – CB	2		17	2	21
Sex Offender - Sexual History Polygraph – CB			6		6
SOTP - CVSA Sexual History			1	1	2
SOTP - CVSA Specific Issue Maintenance			18	17	35
SOTP - GOOD LIVES	8	6	15	9	38
Thinking for a Change - Council Bluffs	1	3	6	4	14
<b>Total</b>	<b>23</b>	<b>21</b>	<b>97</b>	<b>51</b>	<b>192</b>

## Residential Correctional Facility Snapshot

### Female Offenders

Supervision Status	Active At Start	New Admits	Closures	Active At End	Offenders Served
Parole		5	4	1	5
Probation	7	16	17	4	23
Work Release	3	8	10	3	11
<b>Total</b>	<b>10</b>	<b>29</b>	<b>31</b>	<b>8</b>	<b>39</b>

### Male Offenders

Supervision Status	Active At Start	New Admits	Closures	Active At End	Offenders Served
Interstate Compact Probation		1			1
Parole	4	17	15	2	21
Probation	17	32	33	7	49
Special Sentence		2	2		2
Work Release	31	93	81	21	124
<b>Total</b>	<b>52</b>	<b>145</b>	<b>131</b>	<b>30</b>	<b>197</b>

## Residential Correctional Facility Closures

Female and Male Offenders

Supervision Status / Closure Category	Successful	Unsuccessful	Administrative	Total
Interstate Compact Probation				
Parole	17		2	19
Probation	47	1	2	50
Special Sentence	2			2
Work Release	87	1	3	91
<b>Total</b>	<b>153</b>	<b>2</b>	<b>7</b>	<b>162</b>

## Residential Treatment Center Snapshot

Supervision Status	Active At Start	New Admits	Closures	Active At End	Offenders Served
Interstate Compact Parole	1				1
OWI Continuum		3	2	1	3
Parole		5	4		5
Probation	8	27	30	8	35
Special Sentence	7	25	19	9	32
Work Release	5	13	12	4	18
<b>Total</b>	<b>21</b>	<b>73</b>	<b>67</b>	<b>22</b>	<b>94</b>

## Residential Treatment Center Closures

Supervision Status / Closure Category	Successful	Unsuccessful	Administrative	Total
OWI Continuum	2			2
Parole	3		1	4
Probation	25	1	4	30
Special Sentence	17		2	19
Work Release	12			12
<b>Total</b>	<b>59</b>	<b>1</b>	<b>7</b>	<b>67</b>

### Average Daily Population - need

Residential Correctional Facility – 55.72

Residential Treatment Center – 24.80

## Specialty Snapshot

Specialty	Active at Start	New Admits	Active at End	Closures	Offenders Served
Day Reporting – Residential	2	6	0	8	8
Drug Court Supervision	29	15	24	20	44
Global Positioning – Satellite	34	247	69	213	281
Intensive Supervision	108	1	16	93	109
Low Risk Probation	1,173	656	1,047	782	1,829
Mental Health Court	19	8	14	13	27
PTR - Level 2	16	51	29	39	67
PTR - Level 3	0	1	1	0	1
SCRAM (Secure Continuous Remote Alcohol Monitor)	2	4	2	4	6
Sex Offender	155	129	171	123	284
WOCMM (Women Offender's Case Management Model)	17	2	0	21	19
<b>Total</b>	<b>1,555</b>	<b>1,120</b>	<b>1,373</b>	<b>1,316</b>	<b>2,675</b>

## Specialty Closures

Specialty	Administrative	Intermediate Sanction	Successful	Unsuccessful	Total
Day Reporting - Residential	5	2	1		8
Drug Court Supervision	1		11	8	20
Global Positioning - Satellite	33	40	109	31	213
Intensive Supervision	17	9	45	22	93
Low Risk Probation	31	132	535	84	782
Mental Health Court	2		9	2	13
PTR - Level 2	3	5	26	5	39
SCRAM (Secure Continuous Remote Alcohol Monitor)			4		4
Sex Offender	48	2	42	31	123
WOCMM (Women Offender's Case Management Model)	8	4	7	2	21
<b>Total</b>	<b>148</b>	<b>194</b>	<b>789</b>	<b>185</b>	<b>1,316</b>

## Security Standards – Toxin by Substance and Type

<b>Substance</b>	<b>Negative</b>	<b>Positive</b>	<b>Total</b>
Alcohol	6,458	92	6,550
Barbiturates	8,050	4	8,054
Benzodiazepine (including Valium)	7,952	131	8,083
Cocaine	8,676	13	8,689
Inhalant		1	1
MDMA – Ecstasy		1	1
Methamphetamine	8,137	764	8,901
Morphine	23		23
Opiate other than Heroin	8,636	24	8,660
Opiates including Heroin		1	1
Other Amphetamines	8,332	338	8,670
Other Stimulant	1		1
PCP/Phencyclidine	8,055	1	8,056
Suboxone		1	1
Synthetic Drug	23	1	24
THC	8,455	355	8,810
<b>Total</b>	<b>72,798</b>	<b>1,727</b>	<b>74,525</b>

## Security Standards – Non-toxin by Type & Sub-type

Non-Toxin Type	Non-Toxin Sub Type	Total
Electronic Device	Cell Phone	74
Offender Assigned Area	Locker	1
Offsite	Arrest - New Charge	15
Offsite	Arrest - Violation	54
Offsite	Employment	117
Offsite	Furlough	3
Offsite	Home Placement Investigation	135
Offsite	Home Search	29
Offsite	Home Visit	2,735
Offsite	Home Visit - Attempted	144
Offsite	Other Agency Assist	18
Offsite	Pre-Warrant Check	2
Offsite	Public Location Field Check	59
Offsite	Transport Courtesy	2
Offsite	Vehicle	13
Offsite	Warrant - Absconder	6
Offsite	Warrant Check - Attempted	16
Offsite	Warrant - New Charge	4
Offsite	Warrant - Violation	41
Onsite	Arrest - Violation	1
Onsite	Day Reporting	8
Onsite	Vehicle	73
Personal Search	Pat	34,698
Personal Search	Strip	346
Room/Cell	Officer	568
Telephone	Day Reporting	327
Telephone	Employment	146
Telephone	Furlough	1,961
	<b>Total</b>	<b>41,596</b>

## FY20 Total Expenditures by Line Items

	EXPENDITURES	GENERAL FUND (POS)	Local/Fed/Other	GRAND TOTAL
101	Personal Services	\$5,371,395.30	\$406,730.85	\$5,778,126.15
202	Personal In-State Travel	11,000.00	16,351.00	27,351.00
203	Vehicle Operation	10,000.00	10,562.14	20,562.14
205	Personal Out-State Travel	-	-	-
301	Office Supplies	16,271.63	24,000.00	40,271.63
302	Facility Maint. Supplies	-	7,613.25	7,613.25
304	Prof. & Scientific Supplies	9,429.19	18,300.00	27,729.19
306	House/Sub. Supplies	12,766.17	9,800.00	22,566.17
308	Other Supplies	-	4,938.39	4,938.39
311	Food	66,862.44	121,467.71	188,330.15
312	Uniforms	2,700.00	4,563.64	7,263.64
401	Communications	28,339.88	9,101.00	37,440.88
402	Rental	25,000.00	38,492.00	63,492.00
403	Utilities	31,997.22	30,000.00	61,997.22
405	Prof. & Scientific Services	4,761.55	11,800.00	16,561.55
406	Outside Services	1,432.71	18,000.00	19,432.71
407	Intra-State Transfers	-	-	-
408	Advertising & Publicity	-	3,219.38	3,219.38
409	Outside Repairs	75,000.00	24,437.58	99,437.58
412	Auditor Reimbursement	-	-	-
414	Remb. to Other Agencies	15,215.97	-	15,215.97
416	ITS Reimbursement (Data Proc)	-	10,164.00	10,164.00
417	Workers Compensation	5,092.94	-	5,092.94
501	Equipment	-	-	-
502	Office Equipment	-	-	-
503	Non-Inventory Equipment	70,389.43	18,440.27	88,829.70
510	Data Processing	39,610.57	15,395.43	55,006.00
601	Claims	-	-	-
602	Other Expenses	18,126.00	-	18,126.00
604	Securities	-	-	-
803	Aid to Individuals	-	-	-
901	Capitals	-	-	-
	<b>TOTAL</b>	<b>5,815,391.00</b>	<b>803,376.64</b>	<b>6,618,767.64</b>

**FY20 Expenditures by Cost Center**

Personal Services	\$5,778,126.15
Travel & Subsistence	47,913.14
Supplies	298,712.42
Contractual Services	332,054.23
Equipment & Repairs	143,835.70
Claims & Misc.	18,126.00
Licenses, Permits & Refunds	
State Aid	
Plant Improvement	
<b>Total</b>	<b>\$6,618,767.64</b>

**FY20 Offender Fees Collected**

<b>Residential Rent</b>	
RCF	\$423,124.10
RTC	\$153,362.82

<b>Offender Fees</b>	
OWI Treatment	0.00
Sex Offender Treatment	\$20,420.11
Supervision Fees	\$354,714.29

**FY20 Expenditures by Special Project by Revenue Source**

	<b>DRUG COURT</b>	<b>SEX OFFENDER</b>	<b>IDAP</b>	<b>COMMUNITY WORK CREW</b>	<b>INTENSIVE SUPERVISION</b>
General Fund	\$98,705.47	\$302,275.80	\$21,584.89	\$80,983.33	\$704,649.07
Local	\$7,054.69	\$2,489.94	-	-	\$18,046.05
<b>TOTAL</b>	<b>\$105,760.16</b>	<b>\$304,765.74</b>	<b>\$21,584.89</b>	<b>\$80,983.33</b>	<b>\$722,695.12</b>

**FY20 Total Revenues by Source**

	<b>REVENUE</b>	<b>GENERAL FUND (POS)</b>	<b>Local/Fed/Other</b>	<b>GRAND TOTAL</b>
01	Balance Forward	-	\$822,914.99	\$822,914.99
05	Appropriation	\$5,815,391.00	-	\$5,815,391.00
05	Salary Adjustment	-	-	-
05	De-appropriation	-	-	-
05	Re-Allocation	-	-	-
05	Sex Offender Transfer	-	-	-
05	Workers Compensation	-	-	-
201	Federal Grants	-	\$22,163.46	\$22,163.46
202	Local Gov't (County Agreements)	-	\$3,242.00	\$3,242.00
204	Intra-State Transfers	-	-	-
205	Federal Pass-Through	-	-	-
301	Interest	-	\$155.52	\$155.52
401	Enrollment Fees	-	\$375,134.40	\$375,134.40
402	Fees & Licenses	-	\$576,476.92	\$576,476.92
501	Miscellaneous Revenue	-	\$40,197.95	\$40,197.95
704	Other Revenue	-	-	-
	<b>TOTAL</b>	<b>\$5,740,922.00</b>	<b>\$5,815,391.00</b>	<b>\$1,840,295.24</b>



## FY20 Expenditures by Major Cost Center (ORGS)

	EXPENDITURES	ADMIN	PROBATION/ PAROLE	RESIDENTIAL	FEMA / JAG	DRUG COURT	SEX OFFENDER	IDAP	COMMUNI TY WORK CREW	INTENSIVE SUPERVISION	TOTAL
101	Personal Services	705,586.82	2,138,731.01	1,762,284.91		98,072.16	299,686.88	21,584.89	79,297.48	672,882.00	5,778,126.15
202	Personal In-State Trav	3,197.12	10,307.47	5,198.43		501.71	1,647.72	-	-	6,498.55	27,351.00
203	Vehicle Operation	10.00	11,155.82	1,989.28		-	-	-	1,432.26	5,974.78	20,562.14
205	Personal OOS Travel	-	-	-		-	-	-	-	-	-
301	Office Supplies	16,706.46	20,132.68	2,814.09		491.49	39.94	-	-	86.97	40,271.63
302	Fac. Maint. Supplies	-	2,413.64	5,199.61		-	-	-	-	-	7,613.25
304	Prof. & Scientific Supp	-	8,533.23	9,612.07	208.22	6,687.50	-	-	-	2,688.17	27,729.19
306	House/Sub. Supplies	-	9,375.31	13,190.86		-	-	-	-	-	22,566.17
308	Other Supplies	-	170.96	195.79	1,264.84	175.70	-	-	-	3,131.10	4,938.39
311	Food	-	-	188,297.90	32.25	-	-	-	-	-	188,330.15
312	Uniforms	-	-	3,974.84		-	-	-	-	3,288.80	7,263.64
401	Communications	-	20,500.62	8,807.83		-	546.33	-	.50	7,585.60	37,440.88
402	Rental	-	53,484.00	-		-	-	-	-	10,008.00	63,492.00
403	Utilities	-	11,575.25	48,943.41		-	-	-	-	1,478.56	61,997.22
405	Prof. & Scientific Svcs	12,406.00	2,074.80	-69.25		-300.00	2,450.00	-	-	-	16,561.55
406	Outside Services	1,725.00	1,585.45	15,785.24		-	-	-	-	337.02	19,432.71
407	Intra-State Transfers	-	-	-		-	-	-	-	-	-
408	Advertising & Pub.	1,716.38	-	-		-	-	-	-	1,503.00	3,219.38
409	Outside Repairs	-	6,993.14	92,245.80	198.64	-	-	-	-	-	99,437.58
412	Auditor Reimburse.	-	-	-		-	-	-	-	-	-
414	Reimb. to other Agen	13,537.27	517.65	745.70		31.60	94.87	-	55.16	233.72	15,215.97
416	ITS Remb. (Data Proc)	-	6,684.00	3,480.00		-	-	-	-	-	10,164.00
417	Workers Comp	500.00	1,592.94	2,000		100.00	300.00	-	100.00	500.00	5,092.94
501	Equipment	-	-	-		-	-	-	-	-	-
502	Office Equipment	-	5,774.20	385.20		-	-	-	-	-	6,159.40
503	Non-Inventory Equip	7,149.27	18,267.37	45,706.59	5,063.08	-	-	-	-	6,483.99	82,670.30
510	Data Processing	19,163.58	20,394.06	-	15,395.43	-	-	-	52.93	-	55,006.00
601	Claims	-	-	-		-	-	-	-	-	-
602	Other Expenses	6,868.00	2,540.70	8,702.44		-	-	-	-	14.86	18,126.00
604	Securities	-	-	-		-	-	-	-	-	-
803	Aid to Individuals	-	-	-		-	-	-	-	-	-
901	Capitals	-	-	-		-	-	-	-	-	-
	<b>TOTAL</b>	<b>788,565.90</b>	<b>2,352,804.30</b>	<b>2,219,490.74</b>	<b>22,162.46</b>	<b>105,760.16</b>	<b>304,765.74</b>	<b>21,584.89</b>	<b>80,938.33</b>	<b>722,695.12</b>	<b>6,618,767.64</b>

## Employee Training

- 2019 Iowa Sex Offender Registry Symposium Training
- Achieving Change Through Value-Based Behavior (ACTV) – Iowa Domestic Abuse Program
- Active Listening
- Active Shooter and Workplace Violence
- A Closer Look: Methamphetamine, Opioids and Poly-Substance Use
- Alcohol and Drug Counseling Training
- Asbestos Awareness FY20
- Basic Level II Academy
- Behavioral Mental Health Issues/ Suicide FY20
- Best Practices in Treatment/Supervision – Sex Offender Treatment Professional Certificate Training
- Bloodborne Pathogens FY20
- Breakroom Etiquette
- Case Management Training
- CCP Behavior Chain and Cognitive Restructuring FY20
- CCP Cost Benefit Analysis FY20
- CCP Effective Disapproval and Effective Use of Authority FY20
- CCP Problem Solving Techniques FY20
- CCP Quality Interpersonal Relationships FY20
- CCP Structured Skill Building FY20
- Cell Extractions FY20
- Child Abuse Mandatory Reporter Training
- CJIS Security Training
- Collaborative Space Etiquette: Food Issues and Noise Issues
- Community Response Model – Iowa Domestic Abuse Program
- Comprehensive Assessment/Credibility Assessments – Sex Offender Treatment Professional Certificate Training
- Computer Voice Stress Analyzer
- Con Games FY20
- Conflict Management
- Contraband & Searches FY20
- Correctional History FY20
- Creating Great Teamwork (Part 3 of 5): Working With Others Within the Company
- Cutting Edge Communication: Developing Successful Mindsets
- Cyber Security Awareness: You Are the First Line of Defense
- Cyber Security Awareness: Digital Forensics, The Dark Web and ICAC Investigations
- DataMaster DMT
- DEA Prescription Drug Interventions Training
- Dealing With Angry People: Easy Process to Resolve Anger
- Defensive Tactics Training
- Dependent Adult Abuse Mandatory Reporter Training
- Developing for Success: Increase Your Personal Performance
- Disagreements at Work: Introduction
- DISTRICTS Medication Distribution FY20
- DISTRICTS Sexual Harassment Discrimination FY20
- Diversity: Seeking Commonality (Part 2 of 3) -- The Don'ts and Do's
- Effective Responses to Behavior FY20
- Effectively Implementing the Risk Principle FY20
- Emergency Care Provider
- Family Reunification after child Sexual Abuse
- Female Sex Offenders: Who Are They and How Do we Treat Them?
- Firearms Training
- Fire Extinguisher FY20

- First Aid FY20
- Gaming Systems & Problematic sexual behaviors
- Handgun Qualification
- Hazards Communication & Right to Know FY20
- How to Tell Someone You Forgot Their Name
- ICON & Generic Notes FY20
- Impact of Pornography on Children, Youth and Culture
- Implicit Bias FY20
- Implied Consent Law
- Introduction to Motivational Interviewing with Sex Offenders
- Iowa Department of Corrections Leadership Training
- IOWA/NCIC Certification
- Iowa Law Enforcement Emergency Care Provider Training
- Iowa TOOL Training
- LEAD NOW: Team Building
- Level 2 CJIS Security Training
- LGBT+ Equality in the Workplace
- Lock Out & Tag Out for AFFECTED EMPLOYEES FY20
- Managing Boundaries
- Naloxone Use FY20
- NEO On-boarding (200)
- New Hire Success: Starting Your New Job Right
- Offender Counts & Accountability FY20
- Personal Safety Awareness FY20
- Personal Safety Instructor Certification
- Practical Ways to Optimize Health and Wellbeing: Hope, Calm, Joy and Laughter
- PREA FY20
- Promoting Sex-Wise Parenting
- Respectful Relationships: Sexual Harassment
- Responses and Incentives FY20
- Responses to Offender Behavior FY20
- Rifle Qualification
- Secondary Trauma/Victim Issues – Sex Offender Treatment Professional Certificate Training
- Sex Offender Treatment Professional Certification Training – Juvenile Issues
- Sexual Violence Propensity (SVP) Assessment
- Six Key Strategies for Therapeutic Engagement with Sex Offender
- Shotgun Qualification
- SO Registry/Trends/Mandatory Reporting Concerns – S.O. Treatment Professional Certificate Training
- Special Populations – S.O. Treatment Professional Certificate Training
- Standardized Field Sobriety Testing
- Systems Overview FY20
- Team Building: Characteristics of a Successful Team
- The Good Lives Model of Sex Offender Rehabilitation: What You Need to Know
- Thinking For A Change Facilitator Training
- Time Management Tune-Up: Part 2 -- Mind Your Minutes
- Tool & Key Control FY20
- Use of Force FY20
- Victim Services FY20
- Wellness & Stress Management FY20
- What to Say When: There's Conflict Between Team Members
- Work Rules & Code of Conduct FY20

## Prison Rape Elimination Act (PREA) Audit

On June 13-15, 2017, the Residential Correctional Facility and Residential Treatment Center underwent their second Prison Rape Elimination Act (PREA) Audits. The audits were conducted by Department of Justice certified auditor Glynn Maddox. Both facilities passed the audit and are in compliance with the federal PREA standards. A complete audit report for each facility is located online at: <http://www.fourthdcs.com/audit.html>. Due to the COVID-19 pandemic, the third round of PREA audits scheduled for May 13-14, 2020 were re-scheduled to August 3-6, 2020.

## Income Offset Program

The Income Offset Program is a method used by the State of Iowa to collect money owed to the State under Chapter 8A.504 of the Code of Iowa. The Iowa Code directs the Department of Administrative Services, State Accounting Enterprise (DAS-SAE) to establish and maintain a procedure to collect against any claim owed to a person by a state agency, and then apply the money owed to the person against the debt owed by the person to the State of Iowa. Sources of Income Offset Funds include:

- Tax Returns
- Vendor payments for Goods and Services
- Casino Winnings
- Lottery Winnings

### Income Offset Collections by Fiscal Year:

FY2011 – \$8,352.85	FY2016 – \$6,818.03
FY2012 – \$15,344.69	FY2017 – \$11,767.45
FY2013 – \$11,338.54	FY2018 – \$15,033.64
FY2014 – \$11,778.98	FY2019 – \$22,869.96
FY2015 – \$10,231.55	FY2020 - \$19,343.75

## Employee Information

Average Number of Employees – 61.5

Authorized Number of Employees – 63

### New Hires

- Kaila Merchant, Probation/Parole Officer III
- Bailey Tacke, Residential Officer
- Julio Iraheta, Residential Officer
- Justin Bronson, Residential Officer
- Mike Becker, Residential Officer
- Margaret Knudsen, Residential Officer
- Heather Stevenson, Residential Officer
- Natalie Boos, Residential Officer
- Randy Baxter, Residential Officer
- Suzanne Schleifman, Personnel Technician

## Reclassification

- Kevin Coughlin, Residential Supervisor to Executive Officer

## Resignations

- Mike Becker, Residential Officer
- Jackie Plowman, Residential Officer
- Michael Pattavina, Residential Officer
- Crystal Statzer, Residential Officer
- Tyson Howard, Probation/Parole Officer III

## Retirements

- Colleen Bryant, Secretary
- Veronica LeGuillou, Personnel Technician

## Promotions

- Dana Bruce, Probation/Parole Officer I to Probation/Parole Officer II
- Dale Davis, Probation/Parole Officer II to Probation/Parole Officer III
- Samantha Myers, Residential Officer to Probation/Parole Officer I
- Shea Scalise, Residential Officer to Probation/Parole Officer I
- Tabitha Dezeeuw, Residential Officer to Probation/Parole Officer II
- Dan Newby, Probation/Parole Officer III to Probation/Parole HRU Supervisor
- Christina Fyfe, Probation/Parole Officer II to Residential Supervisor

## Termination

- Kara Mueller, Residential Officer



**Seated L-R:** Anne Robbins, Samantha Myers, Tabitha DeZeeuw, Dana Bruce, LaDonn Grieser, Kim Egner, Crystal Cook, Any Haase and Nikki Verschoor **1<sup>st</sup> row standing L-R:** Angie Larsen, Jen Foltz, Christy Fyfe, Denise Newberg, Stacey Beaman, Suzanne Schleifman, Kelly Jennings, Kaila Merchant and Rich Alcala **2<sup>nd</sup> row standing L-R:** DeLon Naig, Paul Witt, Jim Weberg, Brian Richmond, Matt Jennings, Dale Davis, Juan Chavez, Justin Bronson, Chris Coughlin and Wayne Reed **3<sup>rd</sup> row standing L-R:** Kevin Coughlin, Kip Shanks, Chase Roller, Bob McAleer, Matt Whitney, Mike Flairty, Shea Scalise, Dan Newby and Carl Brack