

# ANNUAL REPORT

---

# FISCAL YEAR 2020

**Third Judicial District  
Department of Correctional  
Services**

Submitted by:

**Maureen A. Hansen  
District Director**



# TABLE OF CONTENTS

Director’s Message.....	3
Mission Statement.....	4
District History .....	5
District Map .....	6
2020 Highlights.....	7 - 16
Strategic Initiatives.....	17 - 18
Table of Organization.....	19
Staff Directory .....	20 - 21
Work Unit Pictures .....	22 - 28
Board of Directors.....	29
Board Meeting Highlights.....	30 - 31
Client Quick Facts.....	32 - 35
Average Daily Costs .....	36
Operations Costs .....	37 - 38
Staff Training.....	39
Pre-Sentence Investigation Data .....	Appendix #1..... 40
Client Supervision Data .....	Appendix #2..... 41 - 45
Offense by Type .....	Appendix #3..... 46 - 47
Interventions.....	Appendix #4..... 48 - 50
Security Standards .....	Appendix #5..... 51 - 52
Residential Facility Stats .....	Appendix #6..... 53 - 54

# MESSAGE FROM THE DIRECTOR

**We started our fiscal year off with our first (hopefully annual) open house to celebrate Probation Parole Pre-Trial and Residential Officers Week in July 2019. The open house gave us the opportunity to showcase the terrific staff that we have and talk about the work that we do and describe the positive impact community based corrections has on our communities.**



In January, we began a strategic planning process and identified our top three strategic initiatives. It was important to assess our strengths, weaknesses, opportunities and threats in order to set a comprehensive path towards meeting our goals.

From March 2020 through the end of the fiscal year (and continuing today), COVID-19 caused us to slam on the breaks, assess health safety and supervision safety, and choose a new route. Operations in our residential facilities were most difficult to navigate. Many safeguards were imposed in order to keep residents and staff healthy and safe! From March until June 30, 2020, there were only five positive cases within both residential facilities. Probation/Parole staff utilized all resources available, especially the use of technology, in order to remain in contact with and help clients address the many stressors during this time. Kudos to everyone who have been so innovative and creative in working with clients and stakeholders as COVID-19 continues to affect our communities.

We have such a dedicated and talented staff who work to complement each other's strengths. The amount of support and teamwork for each other is front and center in our culture. This is reflected in advocacy and accountability for our clients, helping them remove barriers and successfully leave the criminal justice system behind.

I want to thank our Board for their guidance and support during the past year. Our ability to communicate and to share a plan for our Department in order to keep our communities healthy and safe is greatly appreciated.

Respectfully,

A handwritten signature in blue ink that reads "Maureen Hansen". The signature is written in a cursive, flowing style.

**District Director**

The Annual Report is prepared in accordance with Section 905.4 of the current Code of Iowa. This report is filed with the Board of Supervisors of each county within the Third Judicial District, with the Iowa Department of Corrections, with the State of Iowa Library, and with any other agency requesting a copy. It provides information about activities in the Third Judicial District Department of Correctional Services from July 1, 2019 through June 30, 2020.

# MISSION STATEMENT

Utilizing Evidence Based Practices and accountability to improve client outcomes and create opportunities for safer communities.

## Values & Beliefs

- To advocate for the health, safety, dignity, and rights of clients, by holding them accountable while assisting them to achieve a pro-social lifestyle.
- Supporting our diverse and innovative staff to uphold team work and staff safety while encouraging individual growth and achievement.
- To promote public safety by managing resources in the most efficient, effective and practicable manner.
- Collaborating and building partnerships with other community agencies to enhance client success.
- To monitor and evaluate programs for general effectiveness and achievement of Department goals.



**The Third Judicial District is one of eight judicial districts in the state of Iowa providing community based correctional services.**

# DISTRICT HISTORY

expanded to include presentence investigations, probation and pre-institutionalized residential services

Probation/Parole Offices in Spencer, IA

1960

1970

1980

1990

2000

2010

Community based corrections emerged in Des Moines

1973

The Department of Correctional Services, as it exists in this judicial district, was formed in **1976 & 1977**

35 bed RTF located at 415 Bluff St in Sioux City, IA  
Department offices at 711 Douglas St, Sioux City, IA

1974

enabling legislation was passed establishing community corrections statewide as locally administered programs funded through and monitored by the Department of Corrections.

Parole offices located in Sioux City

Department offices 5251/2 5th St Sioux City (1st Floor Probation/Parole; 2nd Floor Administration; 3rd Floor RTF)

30 bed RTF located at 720 Western Ave., Sheldon, IA

Birth of the Third Judicial District Department of Correctional Services

Probation/Parole Offices located at 720 Western Ave., Sheldon, IA

2010

2020

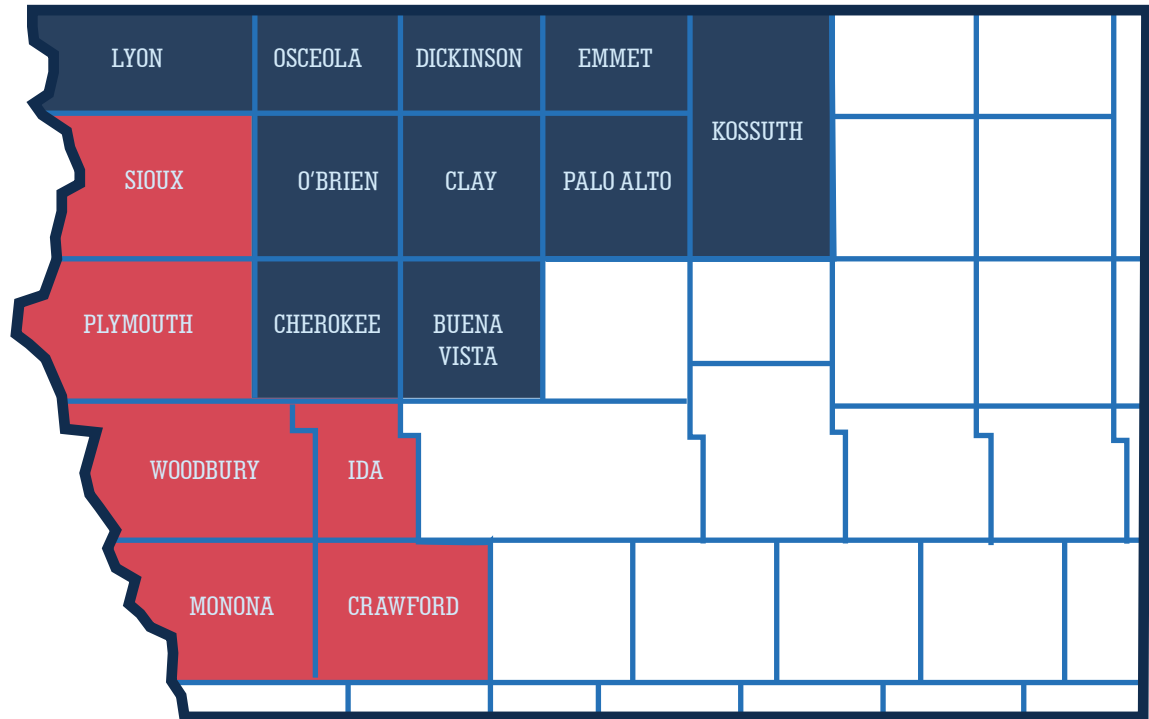
57 bed RTF located at 515 Water St., Sioux City, IA (1st floor) Department offices located at 515 Water St., Sioux City, IA (2nd floor)

42 bed RTF added on at 515 Water St., Sioux City, IA

# DISTRICT MAP

■ 3A

■ 3B



## Location & Contacts

ADMINISTRATION	FIELD SERVICES	RESIDENTIAL SERVICES
<p>515 Water Street Sioux City, IA 51103 (712) 252-0590</p> <p><b>Maureen Hansen, Director</b></p>	<p>515 Water Street Sioux City, IA 51103 (712) 252-0590</p> <p><b>Supervisors:</b> <b>Mark Covey, Todd Hruska,</b> <b>Philip Welte</b> (counties in 3B)</p> <hr/> <p>720 Western Ave. Sheldon, IA 51201 (712) 324-5384</p> <p><b>Kim Waagmeester,</b> <b>Supervisor</b> (counties in 3A)</p>	<p>515 Water Street Sioux City, IA 51103 (712) 252-4226</p> <p><b>Nick O'Brien,</b> <b>RTF North Residential</b> <b>Manager</b></p> <hr/> <p>515 Water Street Sioux City, IA 51103 (712) 224-5515</p> <p><b>Kelsey Callens,</b> <b>RTF South Residential</b> <b>Manager</b></p>



# 2020 HIGHLIGHTS

On July 15, the 3<sup>rd</sup> Judicial District Department of Correctional Services began a weeklong celebration of National PPPS (Pretrial, Probation, and a Parole Supervision) week.

Events held throughout the week included: miniature golf course contest, Media/Open house day, staff breakfast, staff family night picnic and ended with a fun hat/fun hair day. The family night picnic was great opportunity for staff from the Sioux City office and staff from the Sheldon office to gather and share in the camaraderie.



The Open House day was an excellent opportunity for local citizens, law enforcement agencies, attorneys, judges and local treatment providers to be enlightened in all aspects of what we do as a District.

## FUNDRAISERS

Each year, staff from 3rd Judicial District Department of Correctional Services partner with Welcome Home, a program for homeless families in Siouxland through the Community Action



Agency. Staff with Welcome Home nominates a family for us to “Adopt” for the holiday season. For the holiday season 2019, we were fortunate to adopt a single mom and her six children.

## BLOOD DRIVE

On February 24th, the 3rd District hosted our semi-annual Blood Drive. We had 13 donors and were able to supply 13 units of blood/plasma.

## STAFF AND FAMILY GATHERINGS



## FEBRUARY 16, 2020 SOUP AND SANDWICH STAFF FELLOWSHIP





# 2020 HIGHLIGHTS SAFETY COMMITTEE

The Safety Committee meets every two months to discuss and collaborate on safety issues and concerns. The committee is made up of nineteen staff members, representing all divisions within the Department.

Safety issues that we address range from safety of staff and clients within the building to safety while working in the community.

These meetings improve communication within the Department and offers an opportunity for staff to bring safety concerns or new ideas to the committee.

Examples of what our committee accomplished in the past year are listed below.

- Safety Policy review and updates
- Had locks installed on all office doors in the Sioux City building
- Prepared building for annual audits and walk-throughs
- A member of the committee participated in ALICE (Alert Lockdown Inform Counter Evacuate) Training and then brought new ideas back to implement
- Personal Safety Training was held for new employees as a part of the New Employee Orientation (NEO)
- Replaced expired pepper spray and ballistics vests
- Security Cameras installed, Secretaries now have access to lobby cameras
- AEDs and weather alert radios were purchased
- Provided PPE and addressed safety protocols to be used in order to resume daily operations during the COVID Pandemic



**Safety issues that we address range from safety of staff and clients within the building to safety while working in the community.**

Personal Safety Trainers: Nate Balder, Alejandra Gonzalez-Marquez, Adam Timmins



The theme for National Crime Victim Rights Week April 19 -25, 2020 was “Seek Justice| Ensure Victims’ Rights | Inspire Hope”. Unfortunately, April 2020 had many of us limiting interactions and congregating, and practicing shelter in place. Fortunately, we had several talented artists in our residential facilities who were willing to share their talents to honor National Crime Victim Rights Week.



## NATIONAL CRIME VICTIM RIGHTS WEEK

# 2020 HIGHLIGHTS NEW ELECTRONIC TIME MANAGEMENT SYSTEM

During FY19, Third Judicial District began researching electronic time and attendance systems in an effort to streamline the payroll process and eliminate the need for paper copies of timesheets and leave request slips.

After looking into a number of different options, we found that locally owned, Time Management Systems (TMS) works well with payroll software, is user friendly, and best accommodates the specific needs of Third Judicial District.

Once all employees completed a brief training in using the system to enter and submit hours and request leave, we began a trial period using both paper and electronic time cards in an effort to work out any kinks. By the beginning of the FY20, we moved exclusively to the electronic system. The on boarding process took a great amount of time and effort but the benefit was well worth it.



**During FY19, Third Judicial District began researching electronic time and attendance systems in an effort to streamline the payroll process and eliminate the need for paper copies of timesheets and leave request slips.**

# 2020 HIGHLIGHTS RESIDENTIAL REVOCAATION RATES

The Third Judicial District Residential Facilities received recognition from Central Office for decreasing revocations in calendar year 2019. The yearly revocation rates dropped by 50% between 2018 (43.1%) to 2019 (21.5%).

Additionally, they were the only district to see a reduction in revocation rates for calendar year 2019. Managers Nick O'Brien and Kelsey Callens attribute the reduction in revocations to program changes and tremendous effort put in by Residential Officers and Residential Probation/Parole Officers. Program changes include a change from punitive sanctioning to behavior and incentive based reinforcement. Residential staff also focused on utilizing CCP Skills, writing assignments, directed conversations, and role modeling pro-social behavior when working with the residents.

DISTRICT	REVOCAATION RATE FOR 2019
1ST	33.8% ↑
2ND	32.6% ↑
3RD	21.5% ↓
4TH	32.2% ↑
5TH	39.9% ↑
6TH	44.9% ↑
7TH	46.3% ↑
8TH	34.9% ↑



# 2020 HIGHLIGHTS

## OTHER ACTIVITIES



### BIKE RIDES

Beginning in June, staff, family and some local Law Enforcement Officers participated in weekly bike rides. The rides were anywhere from 18 to 25 miles roundtrip and included one stop to rest and rehydrate. The old adage of “once you learn how to ride a bike you never forget” did not apply to all participants as there were a few minor accidents.

### CARE PACKAGES

In July 2020, a request was made to raise some funds to purchase care packages for our colleagues at FDCF and IMCC. This was an effort to show support for staff at FDCF and IMCC who are dealing with the increased cases of COVID. In one week, the 3<sup>rd</sup> District raised \$305.00.



# UPGRADES

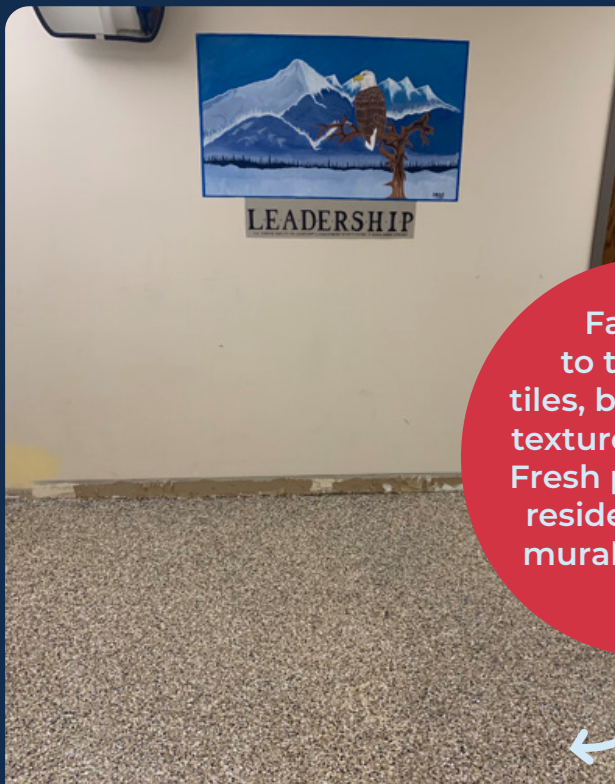
In 1992, our building at 720 Western Ave, Sheldon, IA and our building (pre-addition) located at 515 Water St., Sioux City, IA were built. While some areas have had a new coat of paint or carpet over the past twenty-eight years, other areas were in need of an upgrade and a facelift. We continue to be thankful for a great working environment.

Being good neighbors includes proper drainage of our parking lot.



Farewell to the vinyl tiles, bring on the textured cement. Fresh paint and a resident artist's mural finish the look.

Mia & Stephanie relocate during installation of new carpet and a new paint job.





Building a conference room in the South RTF.



Residents of the South facility make the courtyard beautiful with new landscaping.



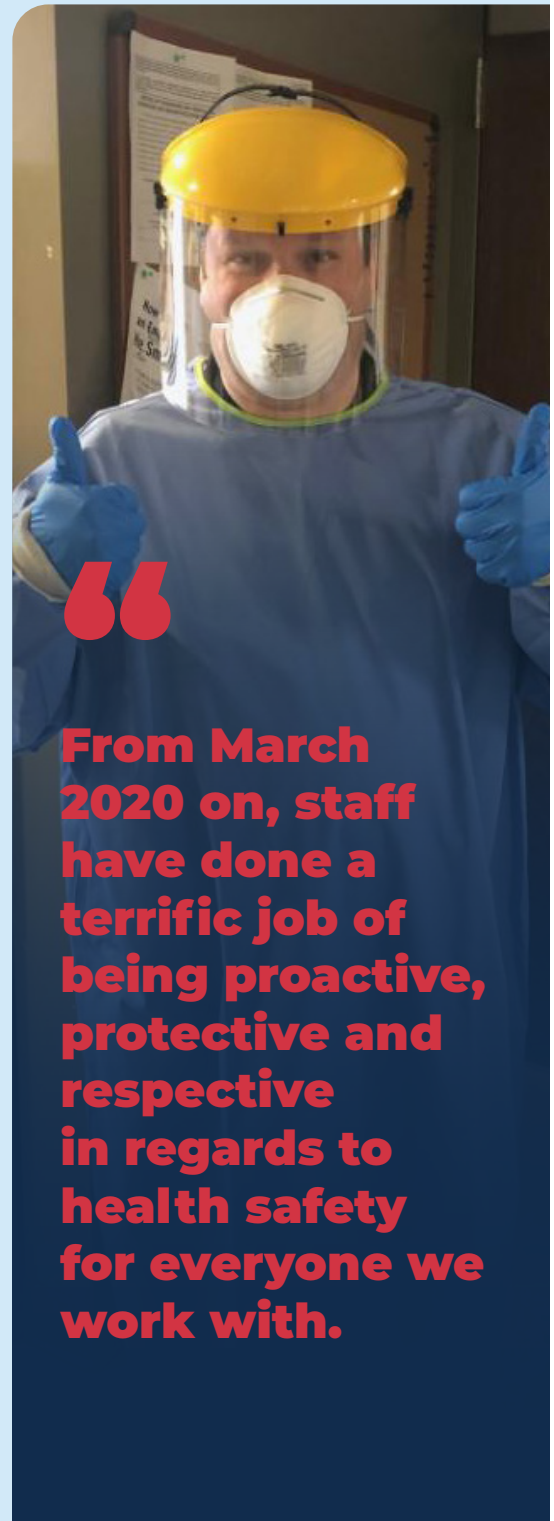
Goodbye vinyl tiles, hello cement! New wall covering and paint to finish off the new look in our main lobby.

# COVID MITIGATION

The Third Judicial District Department of Correctional Services is committed to the safety of our clients, staff and community. With the impact of COVID-19, our Department took the following precautions:

- Limited access/activity in buildings
- Temperatures taken of all entering
- Reduced capacity in residential facilities
- Limitations in residential with outside contact
- Use of face masks/shields
- Use of non-cloth chairs
- Reduced class sizes for social distancing
- Flexible hours and working from home
- Meeting clients outside
- Extra cleaning/sanitizing
- Plastic desk guards
- Office space changed to social distance
- Use of technology for meetings
- Use of technology for training

From March 2020 on, staff have done a terrific job of being proactive, protective and respectful in regards to health safety for everyone we work with. This has required a great deal of flexibility and changing the way we interact with each other. We are also grateful to our clients and stakeholders in working with a quick change in operations, during a very stressful and trying time.



**From March 2020 on, staff have done a terrific job of being proactive, protective and respectful in regards to health safety for everyone we work with.**



---

# STRATEGIC INITIATIVES

---

## CLIENT SUCCESS

We will continue to address community and staff safety by taking advantage of technology, training, and resources

---

## COLLABORATION

We will utilize technology to support communication, increase accountability, improve safety, and enhance relationships with community stakeholders

---

## SAFETY

We will target barriers that limit client access to community resources in order to promote rehabilitation and reduce criminal behavior

# STRATEGIC PLANNING

In January of 2020, we began Department wide voluntary meetings to establish our strategic plan. The purpose of strategic planning is to determine what our goals are for the next few years, and how we plan to reach them. We opted to utilize the SWOT Analysis format to aid us in this process.

## THIRD DISTRICT SWOT ANALYSIS 2020

### STRENGTHS

### WEAKNESSES

Internal

What do we do well?  
What unique resources can we draw on?  
What do others see as our strengths?

What could we improve?  
Where do we have fewer resources than other Districts/geographic areas?  
What are others likely to see as our weaknesses?

### OPPORTUNITIES

### THREATS

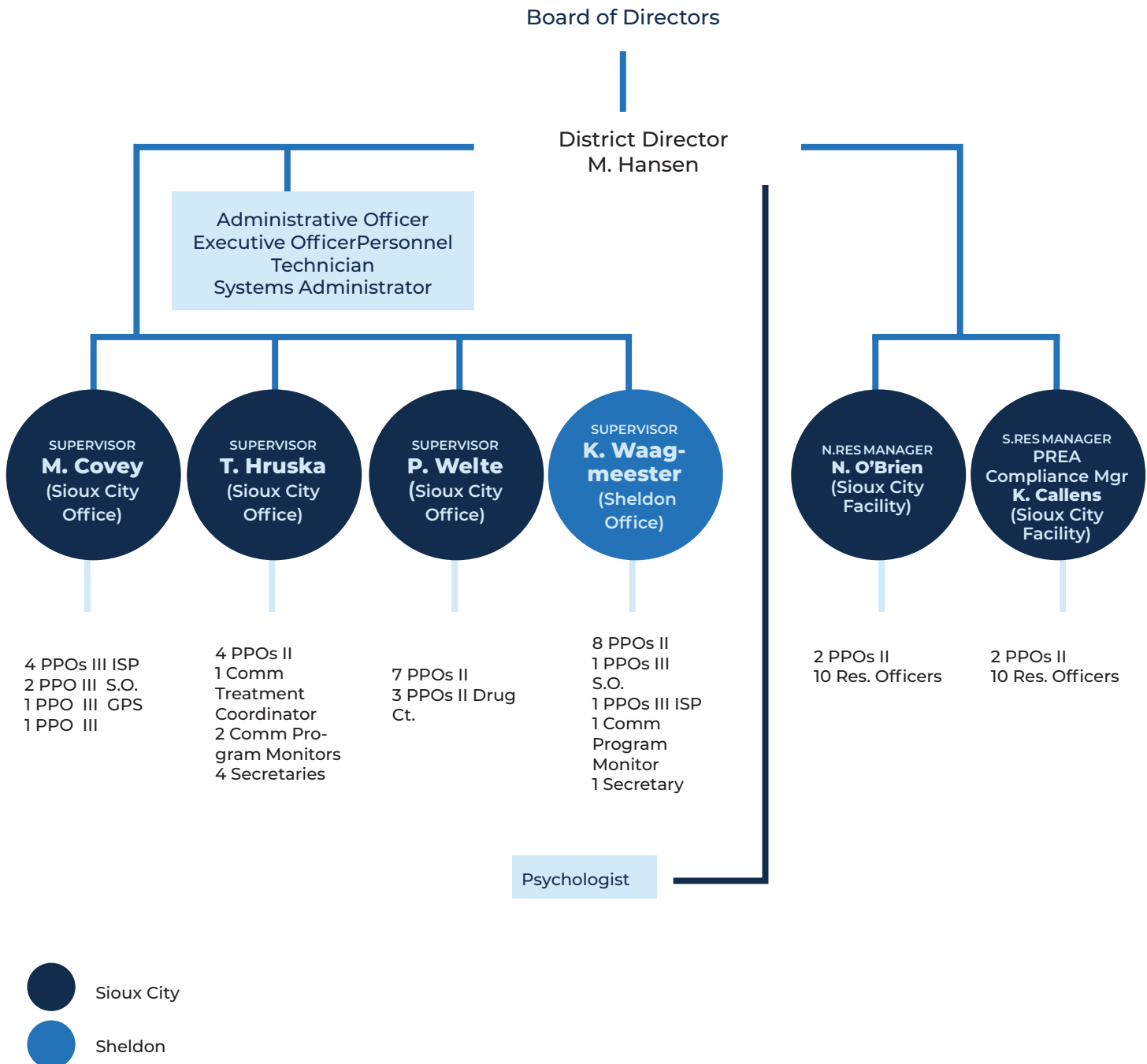
External

What opportunities are open to us?  
What trends could we take advantage of?  
How can we turn our strengths into opportunities?

What threats could harm us?  
What threats do our weaknesses expose us to?

# TABLE OF ORGANIZATION

## THIRD JUDICIAL DISTRICT DEPARTMENT OF CORRECTIONAL SERVICES



## Staff Directory

WORK UNIT	STAFF NAME	TITLE
Administration	Borg, Karen	Executive Officer
Administration	Daniels, Ryan	Systems Administrator
Administration	Dixon, Jolene	Psychologist
Administration	Hagaman, Jody	Personnel Technician
Administration	Hansen, Maureen	District Director
Administration	Sullivan, Laura	Administrative Officer
Residential Facility North	De La O, Kevin	Residential Officer
Residential Facility North	Foote, Daniel	Residential Officer
Residential Facility North	Garcia, Victor	Residential Officer
Residential Facility North	Griffin, Tyler	Probation/Parole Officer II
Residential Facility North	Martin, McKenzie	Residential Officer
Residential Facility North	Miller, Deb	Residential Officer
Residential Facility North	O'Brien, Nick	Residential Manager
Residential Facility North	Pope, Mark	Residential Officer
Residential Facility North	Risdal, Trevor	Residential Officer
Residential Facility North	Roth, Arleen	Residential Officer
Residential Facility North	Sullivan, Abigail	Residential Officer
Residential Facility North	Van Wyk, Whitney	Probation/Parole Officer II
Residential Facility South	Baer, Troy	Residential Officer
Residential Facility South	Callens, Kelsey	Residential Manager
Residential Facility South	Fruge, Cory	Residential Officer
Residential Facility South	Funkhouser, John	Residential Officer
Residential Facility South	Grause, Danielle	Residential Officer
Residential Facility South	Guy, Wayne	Probation/Parole Officer II
Residential Facility South	Johnson, Corey	Residential Officer
Residential Facility South	Maassen, Greg	Residential Officer
Residential Facility South	Myers, Jay	Residential Officer
Residential Facility South	Rodgers IV, Ray	Residential Officer
Residential Facility South	Sopoci, Alex	Residential Officer
Residential Facility South	Thramer, Manon	Probation/Parole Officer II
Residential Facility South	Weeks, John	Residential Officer
Sheldon Field Services	Beltman, Jamey	Probation/Parole Officer III
Sheldon Field Services	Crook, Lou Ann	Secretary
Sheldon Field Services	Grause, Samee	Probation/Parole Officer II
Sheldon Field Services	Johnson, Kris	Probation/Parole Officer II
Sheldon Field Services	Meis, Lesley	Community Program Monitor
Sheldon Field Services	Miller, Daniel	Probation/Parole Officer II



Sheldon Field Services	Pullen, Daniel	Probation/Parole Officer III
Sheldon Field Services	Reck, Tyler	Probation/Parole Officer II
Sheldon Field Services	Shugars, LaNee	Probation/Parole Officer II
Sheldon Field Services	Sweet, Misty	Probation/Parole Officer II
Sheldon Field Services	Van Klompenburg, Michaela	Probation/Parole Officer II
Sheldon Field Services	Vogel, Todd	Probation/Parole Officer II
Sheldon Field Services	Waagmeester, Kim	Probation/Parole Supervisor
Sheldon Field Services	Wolf, Zack	Probation/Parole Officer II
Sioux City Field Services	Anderson, Sara	Probation/Parole Officer II
Sioux City Field Services	Balder, Nathan	Probation/Parole Officer II
Sioux City Field Services	Barrett, Kerry	Probation/Parole Officer II
Sioux City Field Services	Beelner, Stephanie	Secretary
Sioux City Field Services	Bottom, Mindy	Probation/Parole Officer II
Sioux City Field Services	Castle, Madonna	Probation/Parole Officer II
Sioux City Field Services	Colfack, Monte	Probation/Parole Officer III
Sioux City Field Services	Collins, Stacy	Probation/Parole Officer II
Sioux City Field Services	Corporon, Jennica	Probation/Parole Officer III
Sioux City Field Services	Covey, Mark	Probation/Parole Supervisor
Sioux City Field Services	Downing, Kaia	Probation/Parole Officer III
Sioux City Field Services	Flores, Cynder	Community Program Monitor
Sioux City Field Services	Florke, Jennifer	Secretary
Sioux City Field Services	Freese, Mia	Secretary
Sioux City Field Services	Gonzalez-Marquez, Alejandra	Community Program Monitor
Sioux City Field Services	Hankins Walker, Shelly	Probation/Parole Officer II
Sioux City Field Services	Hanson, Patricia	Secretary
Sioux City Field Services	Harmelink, Tori	Probation/Parole Officer II
Sioux City Field Services	Hruska, Todd	Probation/Parole Supervisor
Sioux City Field Services	Iverson, Keith	Probation/Parole Officer II
Sioux City Field Services	Krull, Pat	Probation/Parole Officer II
Sioux City Field Services	Kunze, Matt	Probation/Parole Officer II
Sioux City Field Services	Nobbe, Jared	Probation/Parole Officer III
Sioux City Field Services	Nolen, CJ	Probation/Parole Officer III
Sioux City Field Services	Scarmon, Manny	Probation/Parole Officer III
Sioux City Field Services	Thomas, Anthony	Probation/Parole Officer II
Sioux City Field Services	Thompson, Jim	Probation/Parole Officer III
Sioux City Field Services	Timmins, Adam	Probation/Parole Officer III
Sioux City Field Services	Utesch, Kashe	Community Treatment Coordinator
Sioux City Field Services	Van Holland, Lindsay	Probation/Parole Officer II
Sioux City Field Services	Wallinga, Nate	Probation/Parole Officer II
Sioux City Field Services	Welte, Phil	Probation/Parole Supervisor



**Community Program Monitors & Community Treatment Coordinator**

*Left to right*

*Kashe Utesch (Community Treatment Coordinator), Cynder Flores and Alejandra Gonzalez Marquez (Community Program Monitors)*



**Pre-Sentence Investigators**

*Dan Miller (Sheldon office), Mindy Bottom (Sioux City office) Madonna Castle (Sioux City office)*



**North Residential Treatment Facility Staff**

*Front Row (left to right): Nick O'Brien (Mgr), Whitney VanWyk (PPO), Kevin De-LaO (RO), Abigail Sullivan (RO)*

*Back Row (left to right): Mark Pope (RO), Debbie Miller (RO), McKenzie Martin (RO), Trevor Risdal (RO), Victor Garcia (RO)*

*Not pictured: Tyler Griffin (PPO), Adam TerHaar (RO), Arleen Roth (RO), Daniel Foote (RO)*

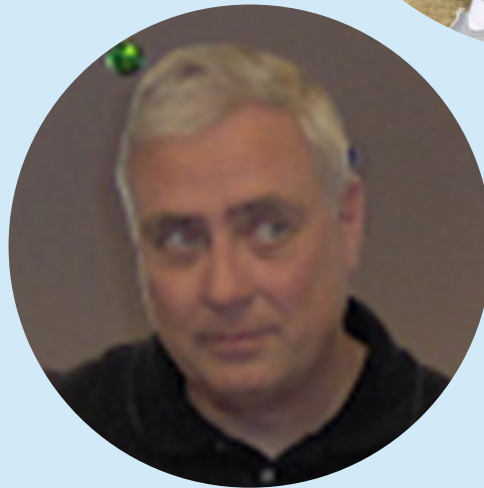
**THIS FISCAL YEAR, WE SAID BEST WISHES  
AND THANK-YOU TO THESE RETIREES**



*Denise Sporrer –  
42 years of service*



*Hamid Aslani –  
27 years of service*



*Steve Middleton –  
20 years of service*

*Lucio Solterro –  
28 years of service*



---

## SHELDON PROBATION/PAROLE OFFICE



*Front Row: Jamey Beltman (PPOIII), Todd Vogel (PPOII), Dan Miller (PPOII), Zack Wolf (PPOII)*

*Back Row: LaNee Shugars (PPOII), Tyler Reck (PPOII), Michaela VanKlombenburg (PPOII), Samee Grause (PPOII), LouAnn Crook (Secretary), Dan Pullen (PPOIII), Kim Waagmeester (Supervisor)*

*Not Pictured: Lesley Meis (Community Program Monitor)*

---

## SIoux CITY CLERICAL UNIT



*Jennifer Florke,  
Mia Freese,  
Stephanie Beelner,  
Patty Hanson,  
Todd Hruska  
(Supervisor)*

---

## SIoux CITY OFFICE



*Left to right  
Karen Borg (Executive  
Officer), Jody  
Hagaman (Personnel  
Technician), Jolene  
Dixon (Psychologist),  
Maureen Hansen  
(District Director),  
Laura Sullivan  
(Administrative  
Officer), Ryan  
Daniels (Systems  
Administrator)*



---

## SIoux CITY PPO'S



*Front Row (left to right): Pat Krull, Kerry Barrett, Nate Wallinga, Matt Kunze, Lindsay Van Holland*

*Back Row (left to right): Shelly Hankins Walker, Tori Harmelink, Nate Balder, Stacy Collins, Keith Iverson*

---

## SIoux CITY OFFICE PAROLE UNIT



*Left to right  
Front Row: CJ Nolen, Adam Timmins, Mark Covey (Supervisor), Kaia Downing, Jennica Corporon*

*Back Row: Jim Thompson, Monte Colfack, Jared Nobbe, Manny Scarmon*

---

## **SOUTH RESIDENTIAL TREATMENT FACILITY STAFF**



*Back Row (L to R) Greg Maassen (RO), Kelsey Callens (Manager), Danielle Grause (RO), Ray Rodgers IV (RO), John Funkhouser (RO), Jay Myers (RO), John Weeks (RO), Corey Johnson (RO)*

*Front Row (L to R) Manon Thramer (PPO), Alex Sopoci (RO), Wayne Guy (PPO), Cory Fruge (RO), Troy Baer (RO)*



## SPECIALTY COURT UNIT



*(from left to right)*

*PPO Supervisor Phil Welte, Woodbury County Drug Court Officer Sara Anderson, Plymouth County Drug Court Officer and Woodbury County Veteran's Court Officer Anthony Thomas*

# BOARD OF DIRECTORS

## **BUENA VISTA COUNTY**

Tom Huseman  
[Thuseman@bvcountyiowa.com](mailto:Thuseman@bvcountyiowa.com)

## **CHEROKEE COUNTY**

Wane Miller  
[wmiller@co.cherokee.ia.us](mailto:wmiller@co.cherokee.ia.us)

## **CLAY COUNTY**

Art Hamrick  
[ahamrick@co.clay.ia.us](mailto:ahamrick@co.clay.ia.us)

## **CRAWFORD COUNTY**

Eric Skoog  
[eskoog@frontiernet.net](mailto:eskoog@frontiernet.net)

## **DICKINSON COUNTY**

Steve Clark  
[clarksr@terril.com](mailto:clarksr@terril.com)

## **EMMET COUNTY**

Tim Schumacher  
[tschumacher87@yahoo.com](mailto:tschumacher87@yahoo.com)

## **IDA COUNTY**

Creston Schubert  
[Cjschubert@schallertel.net](mailto:Cjschubert@schallertel.net)

## **KOSSUTH COUNTY**

Kyle Stecker  
[kstecker@co.kossuth.ia.us](mailto:kstecker@co.kossuth.ia.us)

## **LYON COUNTY**

Jerry Birkey  
[jerry.birkey602@gmail.com](mailto:jerry.birkey602@gmail.com)

## **MONONA COUNTY**

Mike Collison  
612 10th Street  
Onawa, IA 51040

## **O'BRIEN COUNTY**

Nancy McDowell  
[nmcdowell@obriencounty.iowa.gov](mailto:nmcdowell@obriencounty.iowa.gov)  
Executive Committee – Board Chair

## **OSCEOLA COUNTY**

Michael Schulte  
[mschulte@osceolacoia.org](mailto:mschulte@osceolacoia.org)

## **PALO ALTO COUNTY**

Craig Merrill  
[Craig.merrill302@gmail.com](mailto:Craig.merrill302@gmail.com)

## **PLYMOUTH COUNTY**

Don Kass  
[Citizenk2@msn.com](mailto:Citizenk2@msn.com)

## **SIOUX COUNTY**

Mark Sybesma  
[sybm@mtcnet.net](mailto:sybm@mtcnet.net)  
Executive Committee–  
Vice Chair

## **WOODBURY COUNTY**

Martin Pottebaum  
[mpottebaum@woodburycountyiowa.gov](mailto:mpottebaum@woodburycountyiowa.gov)  
Executive Committee  
Board Representative

## **JUDICIAL REPRESENTATIVE**

Treyla Lee  
[AKATML12@aol.com](mailto:AKATML12@aol.com)

## **CITIZEN ADVISORY REP**

Dennis Wright  
[Wrights4946@gmail.com](mailto:Wrights4946@gmail.com)

---

# HIGHLIGHTS OF BOARD MEETINGS

---

## September 6, 2019

- Citizen Advisory Board Member James Jansen submitted his resignation from the Board after many years of Board service
- Announcement of appointment of Director of Iowa Department of Corrections, Dr. Beth Skinner
- Eight staff members are involved in training and sex offender treatment group facilitation in order to obtain their IBTSA certification.
- Additional cameras were installed throughout the 515 Water St. building
- Implementation of new supervision levels based on client risk involves contact standards and dosage hours
- Accreditation with Central Office is completed with no corrective action plan imposed
- Open House to celebrate Probation/Parole/Pre-Trial/Residential Week was a success
- Table of Organization was approved (76.59 FTE's)

---

## December 6, 2019

- Introduction of Dennis Wright (subsequently voted in) to replace James Jensen as the Citizen's Advisory member of the Board
- Video presentation of 20th Anniversary of the Woodbury County Drug Court program
- Governor Reynolds's re-entry apprenticeship programs and employment in the community was discussed
- The Department's mission statement was reviewed and approved
- Resolution #07001 passed: Board authorization for the District Director and Administrative Officer to handle the investment of all operating funds received
- Director Hansen's annual evaluation was completed



---

## March 6, 2020

- Election of officers completed: Board Chair Nancy McDowell, Vice Chair Mark Sybesma, Board Representative Martin Pottebaum
- Strategic Initiative Planning underway
- Presentation on the history of the District's budget and three year plan proposal was approved as budget is able to sustain:
  - **Phase One:** Add two additional staff positions; Community Treatment Coordinator and Executive Officer
  - **Phase Two:** Add six additional staff positions; 4 Community Treatment Coordinators, a Probation/Parole Supervisor, and an additional Administrative Support personnel
  - **Phase Three:** Add three additional staff positions; 2 Community Treatment Coordinators and a Division Manager
- Residential Facilities were highlighted for their operations at the state Residential Managers meeting
- Recommendation was made and approved for re-appointment of Maureen Hansen as District Director for another year

---

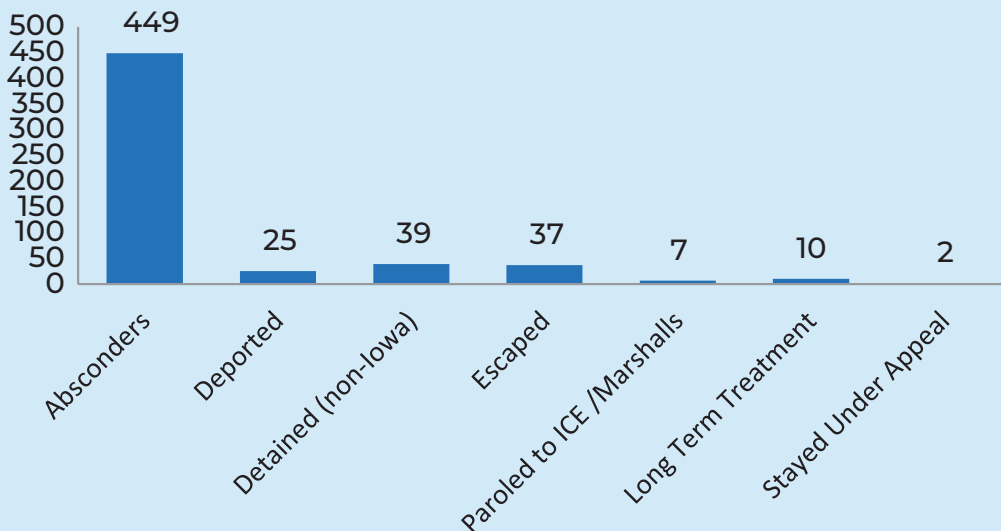
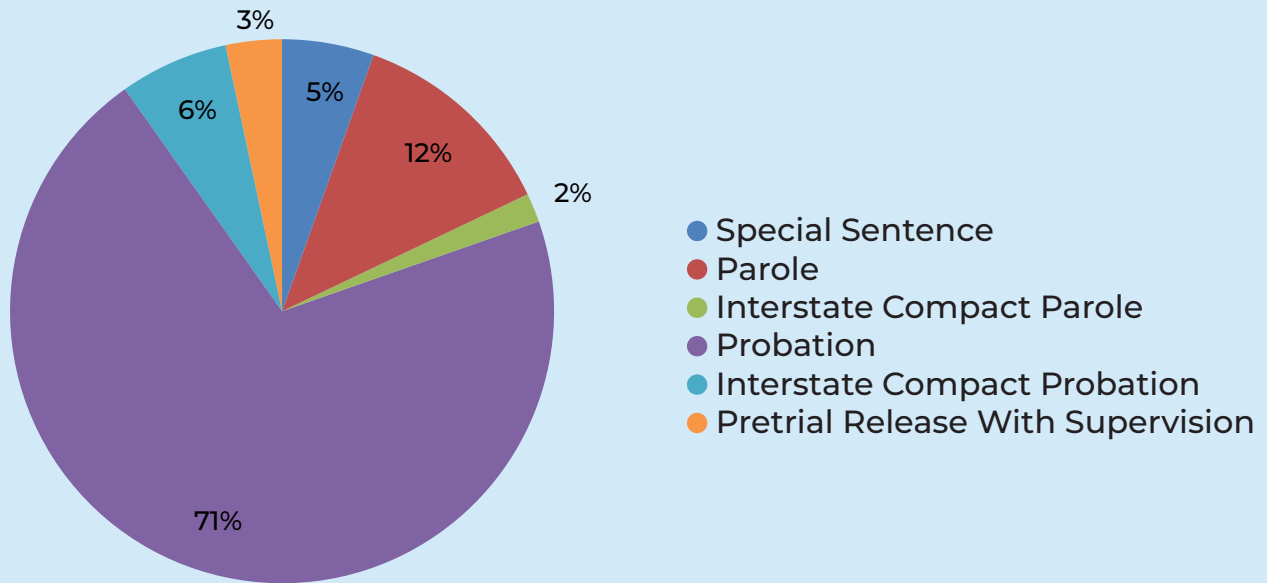
## June 5, 2020

- COVID-19 impact and mitigation efforts were discussed
- Applications have been made to apply for FEMA and technology grants
- Supervision trends were reviewed
- Table the approval of the FY20 Budget Adjustment until the September meeting based on grant requests
- FY 21 Budget is status quo for July and August and legislative action on Department budgets has not been completed as yet
- Executive Committee will review the Personnel Classification Manual when it is complete and will be prepared to make a recommendation to the full Board in September 2020
- By-Laws were reviewed by the Executive Committee prior to the Board meeting and recommended to the Board for approval (passed)
- Motion was unanimously carried to approve Board Chair Nancy McDowell to sign the Purchase of Service Agreement (State of Iowa Department of Corrections)

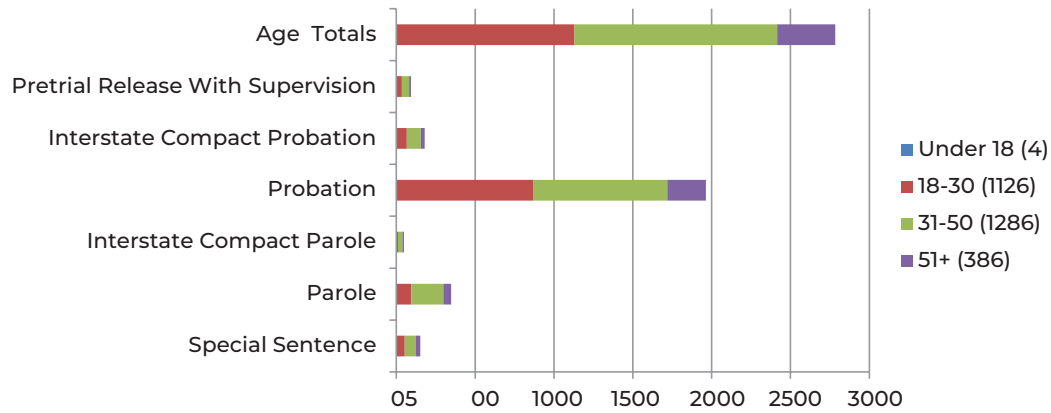
# CLIENT QUICK FACTS

All data in "Client Quick Facts" was data on 6/30/2020

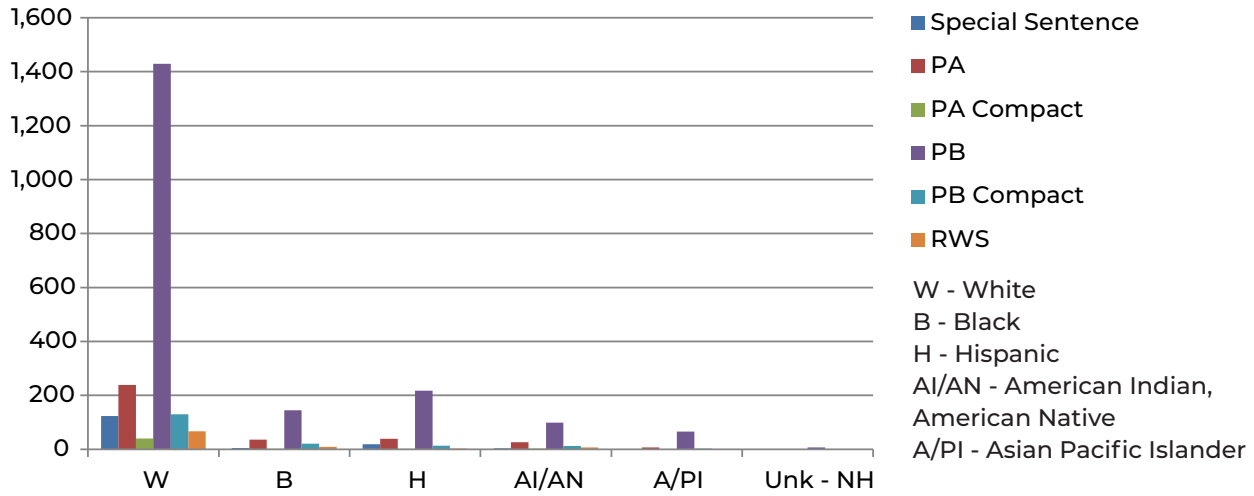
## 3RD DISTRICT CLIENTS ON SUPERVISION



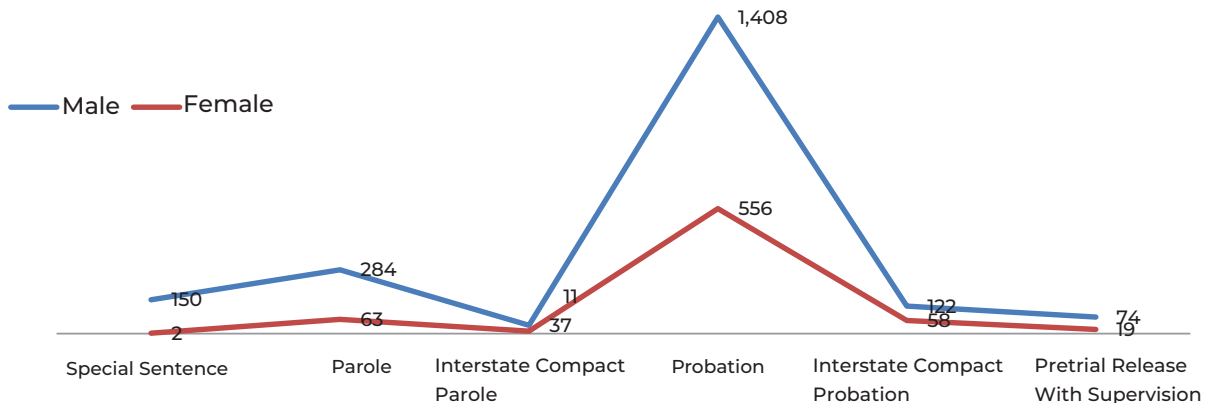
## CLIENTS ON SUPERVISION BY AGE

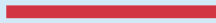


## CLIENTS ON SUPERVISION BY RACE

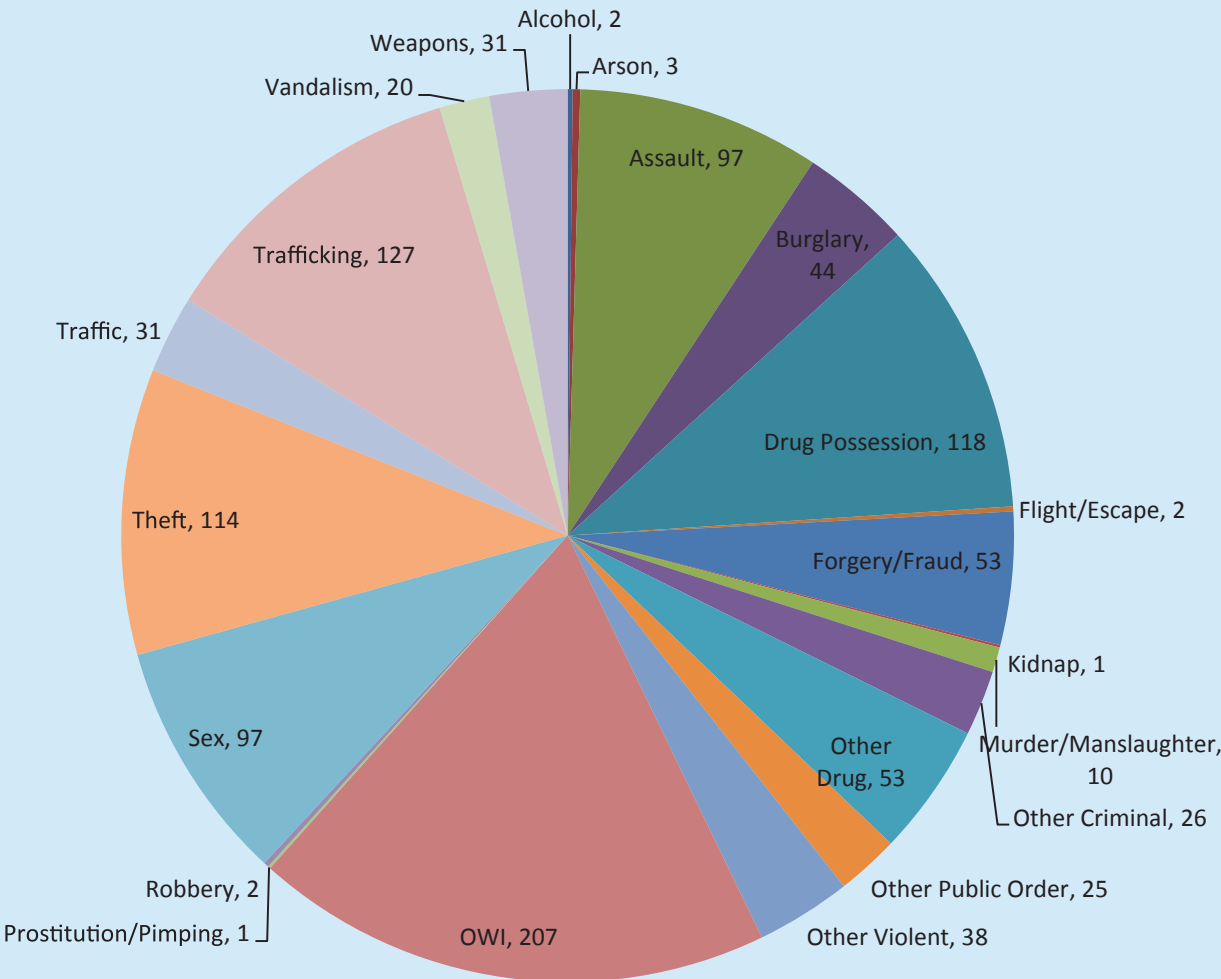


## CLIENTS ON SUPERVISION BY GENDER

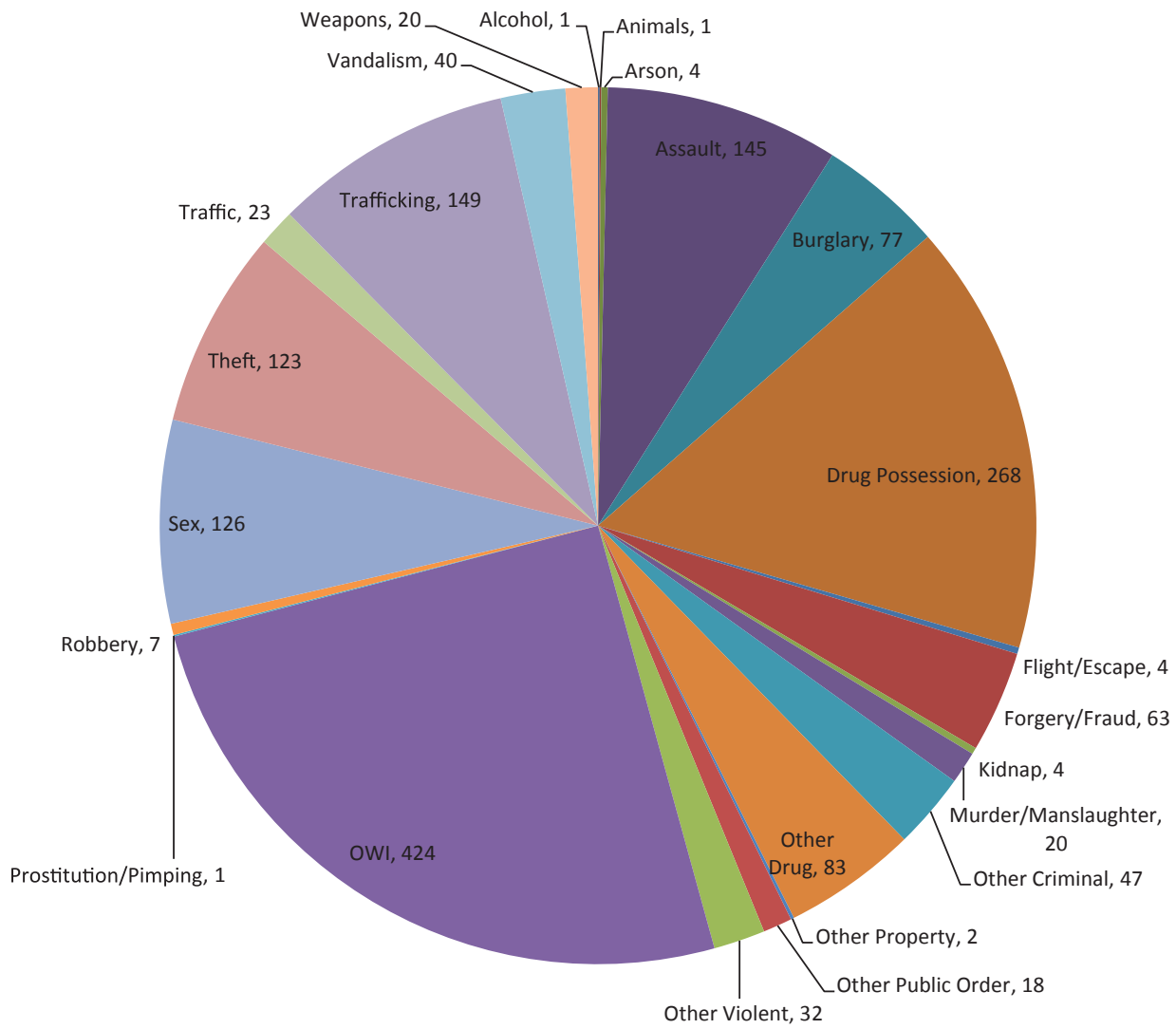




# SHELDON PROBATION/PAROLE OFFICE SUPERVISION BY CRIME TYPE



## ■ **SIOUX CITY PROBATION/PAROLE OFFICE SUPERVISION BY CRIME TYPE**





# DISTRICT FACTS

# AVERAGE DAILY COSTS

## COST PER CLIENT SERVED

**Pre-Sentence Investigation Report      \$382 each**

### Average Cost Per Day

Pre-Trial Release Supervision	\$2.85
Low Risk Probation (paper supervision)	\$.43
Minimum Risk Supervision	\$.69
Moderate Risk Supervision	\$5.43
High Risk Supervision	\$5.24
Specialty Court Supervision	\$12.88
Residential Treatment Facility	\$88.83

# THIRD JUDICIAL DISTRICT RESULTS OF OPERATIONS

Year ending June 30, 2020

		Department Revised Budget	Year to Date Actuals	Year to Date %age
	FTE Positions	80		
	Resources Available			
04B	Balance Brought Forward - Drug Forfeiture	-	-	---
04B	Balance Brought Forward - Local Funds	1,005,104	1,005,105.32	100.00%
04B	Balance Brought Forward - General Fund	-	-	---
05A	Appropriation	7,318,308	7,318,308.00	100.00%
---	Appropriation Transfer	-	-	---
---	Legislative Adjustments	6,117	6,117.00	100.00%
201R	Federal Support	-	-	---
202R	Local Governments	33,610	33,610.00	100.00%
234R	Transfers - Other Agencies	-	-	---
301R	Interest	10,000	9,297.18	92.97%
401R	Fees, Licenses & Permits	-	-	---
401R	Enrollment / Supervision Fees	415,000	417,254.39	100.54%
401R	Sex Offender Fees	15,450	21,354.24	138.22%
501R	State Offender Rent	523,000	519,967.79	99.42%
704R	Miscellaneous	30,000	25,955.76	86.52%
	<b>Total Resources Available</b>	<b>9,356,589.00</b>	<b>9,356,969.68</b>	<b>100.00%</b>
	Funds Expended and Encumbered			
101	Personal Services-Salaries	7,255,521	7,268,203.01	100.17%
202	Personal Travel (In State)	40,000	36,928.13	92.32%
203	State Vehicle Operation	7,500	7,076.38	94.35%
205	Personal Travel (Out of State)	500	461.55	92.31%
301	Office Supplies	29,000	28,463.36	98.15%

302	Facility Maintenance Supplies	5,000	4,840.20	96.80%
304	Professional & Scientific Supplies	27,000	26,988.21	99.96%
306	Housing & Subsistence Supplies	21,000	20,922.53	99.63%
308	Other Supplies	4,500	4,062.63	90.28%
311	Food	95,000	95,327.03	100.34%
401	Communications	66,000	64,225.96	97.31%
402	Rentals	10,000	9,762.30	97.62%
403	Utilities	90,000	81,176.30	90.20%
405	Professional & Scientific Services	30,000	26,587.86	88.63%
406	Outside Services	135,000	134,180.81	99.39%
407	Intra-State Transfers	-	-	---
408	Advertising & Publicity	200	175.00	87.50%
409	Outside Repairs/Service	285,000	282,246.80	99.03%
412	Auditor of State Reimbursements	-	-	---
414	Reimbursement to Other Agencies	21,000	20,442.27	97.34%
416	ITD Reimbursements	-	-	---
417	Worker's Compensation	2,400	2,285.81	95.24%
501	Equipment	-	-	---
502	Office Equipment	-	-	---
503	Equipment - Non-Inventory	68,520	68,090.13	99.37%
510	IT Equipment	110,088	115,568.55	104.98%
601	Claims	-	-	---
602	Other Expense & Obligations	20,000	14,116.87	70.58%
901	Capitals	-	-	---
	<b>Support Totals</b>	<b>1,067,708.00</b>	<b>1,043,928.68</b>	
---	Balance Carry Forward - Local Funds	1,033,360	-	0.00%
---	Balance Carry Forward - General Fund	-	-	---
---	Reversion	-	-	---
	<b>Total</b>	<b>9,356,589.00</b>	<b>8,312,131.69</b>	<b>88.84%</b>
	Ending Balance			

# DISTRICT FACTS

# STAFF TRAINING

Many of our staff are also trainers of specialized topics and facilitate training for the remainder of the Department. We are grateful for their skills and volunteering to be a trainer.

New Employee Orientation training for all new staff hired in the past year was completed in the fall. We taught and coached topics such as: Core Correctional Competencies, Personal Safety, Report Writing, Motivational Interviewing, CPR, Native American Cultural Awareness, and much more.

A concerted focus for training in FY 2020 was Personal Safety and Core Correctional Practices. Staff completed a total of 2,791.25 of training hours through in-person, virtual and web based training.

#### The top ten training topics for FY2020 were:

1. ICOTS (Interstate Transfer of Supervision Rules)
2. Implicit Bias/Sexual Harassment & Discrimination/PREA Refresher
3. Core Correctional Practices/Booster/E-Learnings
4. Performance and Development Solutions
5. Sex Offender Treatment Certifications
6. Strategic Planning (SWOT Analysis)
7. Northwest Iowa Law Enforcement /Safety
8. E-Learning (various modules)
9. New Employee Orientation Training
10. CPR/First Aid/Bloodborne Pathogens/Universal Precautions



**Staff completed a total of**



**of training hours through in-person, virtual and web based training.**

**Pre-Sentence Investigation Reports Completed**

Form Type	PSI Count	PSI Percentage
Long	655	79.2 %
Short	172	20.8 %
Total/Percent	827	100.0 %

**Pre-Sentence Investigation Reports by Offense Type**

Offense Type	Total	Percentage
Violent	119	14.4%
Property	234	28.3%
Drug	270	32.6%
Public Order	166	20.1%
Other	3	4
Total/Percent	827	100.0%

**Pre-Sentence Investigation Reports Ordered by County**

Jurisdiction	Long	%	Short	%	Total	% of Total
Buena Vista	37	86.0%	6	14.0%	43	5.2%
Cherokee	9	81.8%	2	18.2%	11	1.3%
Clay	6	92.3%	3	7.7%	39	4.7%
Crawford	6	33.3%	12	66.7%	18	2.2%
Dickinson	18	81.8%	4	18.2%	22	2.7%
Emmet	25	78.1%	7	21.9%	32	3.9%
Ida	25	92.6%	2	7.4%	27	3.3%
Kossuth	30	96.8%	1	3.2%	31	3.7%
Lyon	11	84.6%	2	15.4%	13	1.6%
Monona	30	78.9%	8	21.1%	38	4.6%
O'Brien	17	100.0%			17	2.1%
Osceola	3	100.0%			3	0.4%
Palo Alto	12	100.0%			12	1.5%
Plymouth	55	83.3%	11	16.7%	66	8.0%
Sioux	25	83.3%	5	16.7%	30	3.6%
Unknown			1	100.0%	1	0.1%
Woodbury	316	74.5%	108	25.5%	424	51.3%
Form Type Total/Percent	655	79.2%	172	20.8%	827	100.0%



## Third District Supervision Data FY 20

## Appendix #2

Third District Counties Supervision Level Per County and Active Supervision Status (As Of 06-30-2020)

Supervision Status	Active at Start	New Admits	Closures	Active at End	Clients Served
Interstate Compact Parole	42	37	30	48	79
Interstate Compact Probation	158	147	123	180	305
No Correctional Supervision Status	1		2		1
Parole	292	258	256	347	550
Pretrial Release With Supervision	77	201	174	93	278
Probation	2,082	1515	1,610	1,964	3597
Special Sentence	126	25	34	152	151
<b>Total</b>	<b>2,778</b>	<b>2,183</b>	<b>2,229</b>	<b>2,784</b>	<b>4961</b>

Supervision Status Reason For Change	Administrative	Intermediate Sanction	Successful	% Successful	Unsuccessful	% Unsuccessful	Totals
Interstate Compact Parole	12		18	60%	0	0%	30
Interstate Compact Probation	58		65	53%	0	0%	123
No Correctional Supervision Status			2	100%	0	0%	2
Parole	2	11	113	44%	130	51%	256
Pretrial Release With Supervision	9		152	87%	13	7%	174
Probation	328		980	61%	302	19%	1610
Special Sentence	2	1	13	38%	18	53%	34
<b>Totals:</b>	<b>411</b>	<b>12</b>	<b>1343</b>		<b>463</b>		<b>2229</b>

Supervision Status By Gender	Male	%	Female	%	Totals	% of Total
Special Sentence	150	98.7%	2	1.3%	152	5.5%
Parole	284	81.8%	63	18.2%	347	12.5%
Interstate Compact Parole	37	77.1%	11	22.9%	48	1.7%
Probation	1,408	71.7%	556	28.3%	1,964	70.5%
Interstate Compact Probation	122	67.8%	58	32.2%	180	6.5%
Pretrial Release With Supervision	74	79.6%	19	20.4%	93	3.3%
<b>Gender Totals</b>	<b>2,075</b>	<b>74.5%</b>	<b>709</b>	<b>25.5%</b>	<b>2,784</b>	<b>100.0%</b>

District Supervision Level Totals (as of 6-30-2020)	Level 0 - None	Level 0 - Not Available for Supervision	Level 0 - Self Supervision	Level 1	Level 2	Level 3	Level 4	Level 4 New Cases	Level 5	Grand Total
Buena Vista	2		9	72	34	21	12	4	7	161
Cherokee	1		10	16	19	5	10		1	62
Clay	2		4	44	26	17	11	1	2	107
Crawford	2		18	13	27	11	3		6	80
Dickinson			3	40	28	8	8		5	92
Emmet				23	20	15	6		5	69
Ida			4	13	13		2		1	33
Kossuth	1		9	29	20	8	10		6	83
Lyon	2		6	21	14	8	6	2	5	64
Monona	1		18	16	21	15	4	1	4	80
O'Brien	1		11	23	31	11	13	1	8	99
Osceola			2	10	17	4	3			36
Palo Alto			5	24	18	10	5		4	66
Sioux	2		43	33	41	7	12	1	6	145
Woodbury	10	8	251	242	262	153	129	18	135	1208
<b>Grand Total</b>	<b>25</b>	<b>9</b>	<b>473</b>	<b>659</b>	<b>635</b>	<b>312</b>	<b>253</b>	<b>30</b>	<b>201</b>	<b>2597</b>

<b>County of Supervision (as of 6-30-2020)</b>	<b>Level 0 - None</b>	<b>Level 0 - Not Available for Supervision</b>	<b>Level 0 - Self Supervision</b>	<b>Level 1</b>	<b>Level 2</b>	<b>Level 3</b>	<b>Level 4</b>	<b>Level 4 New Cases</b>	<b>Level 5</b>	<b>Grand Total</b>
<b>Buena Vista</b>	2		9	72	34	21	12	4	7	161
Interstate Compact Parole	1									1
Interstate Compact Probation				2		1	1		1	5
Parole					6	6	5		1	18
Pretrial Release With Supervision				1	1					2
Probation	1		9	69	21	14	4	4	4	126
Special Sentence					6		2		1	9
<b>Cherokee</b>	1		10	16	19	5	10		1	62
Interstate Compact Parole					1					1
Interstate Compact Probation				1	1					2
Parole	1				1	2	1			5
Pretrial Release With Supervision					1					1
Probation			10	15	14	1	8		1	49
Special Sentence					1	2	1			4
<b>Clay</b>	2		4	44	26	17	11	1	2	107
Interstate Compact Probation				8	1	1	3			13
Parole					6	3	1		1	11
Pretrial Release With Supervision					2					2
Probation	2		4	36	11	9	7	1	1	71
Special Sentence					6	4				10
<b>Crawford</b>	2		18	13	27	11	3		6	80
Interstate Compact Probation				2	1	1				4
Parole					5	3	1		2	11
Pretrial Release With Supervision	1				1	1				3
Probation	1		18	11	17	5	1		4	57
Special Sentence					3	1	1			5
<b>Dickinson</b>			3	40	28	8	8		5	92
Interstate Compact Parole					1					1
Interstate Compact Probation				12	3					15
Parole					3		2		2	7
Pretrial Release With Supervision					6				1	7
Probation			3	28	9	8	6		1	55
Special Sentence					6				1	7
<b>Emmet</b>				23	20	15	6		5	69
Interstate Compact Parole					1					1
Interstate Compact Probation				6	1	1				8
Parole					1	3	2		2	8
Pretrial Release With Supervision					7		1			8
Probation				17	10	11	3		3	44

<b>County of Supervision (as of 6-30-2020)</b>	<b>Level 0 - None</b>	<b>Level 0 - Not Available for Supervision</b>	<b>Level 0 - Self Supervision</b>	<b>Level 1</b>	<b>Level 2</b>	<b>Level 3</b>	<b>Level 4</b>	<b>Level 4 New Cases</b>	<b>Level 5</b>	<b>Grand Total</b>
<b>Ida</b>			4	13	13		2		1	33
Interstate Compact Parole									1	1
Parole					3		2			5
Pretrial Release With Supervision					1					1
Probation			4	13	5					22
Special Sentence					4					4
<b>Kossuth</b>	1		9	29	20	8	10		6	83
Interstate Compact Probation				3			2			5
Parole					2	2	2		2	8
Pretrial Release With Supervision	1				4	1	1			7
Probation			9	26	13	5	4		3	60
Special Sentence					1		1		1	3
<b>Lyon</b>	2		6	21	14	8	6	2	5	64
Interstate Compact Parole						2				2
Interstate Compact Probation				4	2	1	1		1	9
Parole					3					3
Probation	2		6	17	4	3	3	2	3	40
Special Sentence					5	2	2		1	10
<b>Monona</b>	1		18	16	21	15	4	1	4	80
Interstate Compact Probation				3	2					5
Parole					4	2	2		3	11
Pretrial Release With Supervision					4		1			5
Probation	1		18	13	8	12	1	1		54
Special Sentence					3	1			1	5
<b>O'Brien</b>	1		11	23	31	11	13	1	8	99
Interstate Compact Parole					1	1	1			3
Interstate Compact Probation				3	2	1	1		2	9
Parole					5	1	2			8
Pretrial Release With Supervision					2					2
Probation			11	20	11	8	8	1	6	65
Special Sentence	1				10		1			12
<b>Osceola</b>			2	10	17	4	3			36
Interstate Compact Parole					5					5
Interstate Compact Probation				3	1					4
Parole					2	1				3
Pretrial Release With Supervision					1					1
Probation			2	7	6	3	3			21
Special Sentence					2					2



County of Supervision (as of 6-30-2020)	Level 0 - None	Level 0 - Not Available for Supervision	Level 0 - Self Supervision	Lev- el 1	Lev- el 2	Lev- el 3	Level 4	Level 4 New Cases	Lev- el 5	Grand Total
<b>Palo Alto</b>			5	24	18	10	5		4	66
Interstate Compact Parole						1				1
Interstate Compact Probation				6	4					10
Parole					1	1	1		1	4
Probation			5	18	10	8	3		3	47
Special Sentence					3		1			4
<b>Plymouth</b>	1	1	80	40	44	19	19	2	6	212
Interstate Compact Parole					2		1			3
Interstate Compact Probation				5	2	1				8
Parole					5	1	4		3	13
Pretrial Release With Supervision					5		3		1	9
Probation	1	1	80	35	24	16	11	2	2	172
Special Sentence					6	1				7
<b>Sioux</b>	2		43	33	41	7	12	1	6	145
Interstate Compact Parole					4		2			6
Interstate Compact Probation				2	5		1			8
Parole					4		3		1	8
Pretrial Release With Supervision					5					5
Probation	2		43	31	17	7	6	1	5	112
Special Sentence					6					6
<b>Woodbury</b>	10	8	251	242	262	153	129	18	135	1208
Interstate Compact Parole	2				11	3	3	2	3	24
Interstate Compact Probation				48	16	15	8	1	3	91
OWI Continuum	2				2		1	3		8
Parole	2				68	50	53	1	47	221
Pretrial Release With Supervision			2		17	3	3		1	26
Probation	4	8	249	194	108	70	46	9	49	737
Special Sentence					40	6	8		16	70
Work Release						6	7	2	16	31
<b>Grand Total</b>	<b>25</b>	<b>9</b>	<b>473</b>	<b>659</b>	<b>635</b>	<b>312</b>	<b>253</b>	<b>30</b>	<b>201</b>	<b>2597</b>

SHELDON PROBATION/PAROLE OFFICE

Offense Type/Subtype		%	Total	% of Total
Alcohol	2	0.2%	2	0.2%
Arson	3	0.3%	3	0.3%
Assault	97	8.8%	97	8.8%
Burglary	44	4.0%	44	4.0%
Drug Possession	118	10.7%	118	10.7%
Flight/Escape	2	0.2%	2	0.2%
Forgery/Fraud	53	4.8%	53	4.8%
Kidnap	1	0.1%	1	0.1%
Murder/Manslaughter	10	0.9%	10	0.9%
Other Criminal	26	2.4%	26	2.4%
Other Drug	53	4.8%	53	4.8%
Other Public Order	25	2.3%	25	2.3%
Other Violent	38	3.4%	38	3.4%
OWI	207	18.8%	207	18.8%
Prostitution/Pimping	1	0.1%	1	0.1%
Robbery	2	0.2%	2	0.2%
Sex	97	8.8%	97	8.8%
Theft	114	10.3%	114	10.3%
Traffic	31	2.8%	31	2.8%
Trafficking	127	11.5%	127	11.5%
Vandalism	20	1.8%	20	1.8%
Weapons	31	2.8%	31	2.8%
<b>Offense Type Total/Percent</b>	<b>1102</b>		<b>1102</b>	<b>100.0%</b>

## SIOUX CITY PROBATION/PAROLE OFFICE

Offense Type/Subtype		%	Total	% of Total
Alcohol	1	0.1%	1	0.1%
Animals	1	0.1%	1	0.1%
Arson	4	0.2%	4	0.2%
Assault	145	8.6%	145	8.6%
Burglary	77	4.6%	77	4.6%
Drug Possession	268	15.9%	268	15.9%
Flight/Escape	4	0.2%	4	0.2%
Forgery/Fraud	63	3.7%	63	3.7%
Kidnap	4	0.2%	4	0.2%
Murder/Manslaughter	20	1.2%	20	1.2%
Other Criminal	47	2.8%	47	2.8%
Other Drug	83	4.9%	83	4.9%
Other Property	2	0.1%	2	0.1%
Other Public Order	18	1.1%	18	1.1%
Other Violent	32	1.9%	32	1.9%
OWI	424	25.2%	424	25.2%
Prostitution/Pimping	1	0.1%	1	0.1%
Robbery	7	0.4%	7	0.4%
Sex	126	7.5%	126	7.5%
Theft	123	7.3%	123	7.3%
Traffic	23	1.4%	23	1.4%
Trafficking	149	8.9%	149	8.9%
Vandalism	40	2.4%	40	2.4%
Weapons	20	1.2%	20	1.2%
<b>Offense Type Total/Percent</b>	<b>1682</b>		<b>1682</b>	<b>100.0%</b>

**SUCCESSFUL:** Completed Requirements, Sentence Discharged/Terminated

**UNSUCCESSFUL:** Revoked, Noncompliant/Behavioral Issues, Absconded/Escaped, Refused

**ADMINISTRATIVE:** Referred to Alternative Intervention, Transferred to Different Location, Ineligible to Attend, Inappropriate Referral, Not Admitted, Court Discretion, Case Manager Discretion, Death

**INTERMEDIATE SANCTION:** Residential or Jail Placement

Intervention Program	Active at Start	New Admits	Closures	Active at End	Clients Served
Drug Court Program	51	44	49	43	95
Iowa Domestic Abuse Program	639	246	186	676	885
OWI Program	4	5	7	2	9
Restorative Justice Program	1				1
Sex Offender Program	61	43	23	82	104
<b>Total</b>	<b>756</b>	<b>338</b>	<b>265</b>	<b>803</b>	<b>1094</b>

Intervention Program/ Closure Category	Administrative	%	Intermediate Sanction	%	Successful	%	Unsuccessful	%	Totals	%
Drug Court Program	7	14.3%	6	12.2%	15	30.6%	21	42.9%	49	17.8%
Iowa Domestic Abuse Program	37	19.9%	3	1.6%	143	76.9%	3	1.6%	186	67.4%
OWI Program					5	71.4%	2	28.6%	7	2.5%
Sex Offender Program	6	26.1%	1	4.3%	6	26.1%	10	43.5%	23	8.3%
Sex Offender Registry Modification Evaluation – Adult Not On Supervision					8	100.0%			8	2.9%
Sex Offender Registry Modification Evaluation – Adult On Supervision					3	100.0%			3	1.1%
<b>Totals by Category/ Percents</b>	<b>50</b>	<b>18.1%</b>	<b>10</b>	<b>3.6%</b>	<b>180</b>	<b>65.2%</b>	<b>36</b>	<b>13.0%</b>	<b>276</b>	<b>100.0%</b>

## INTERVENTIONS BY RACE

Native American					
Intervention Program	Active at Start	New Admits	Closures	Active at End	Clients Served
Drug Court Program		6	2	4	6
Iowa Domestic Abuse Program	70	19	11	78	89
OWI Program	1	1		1	2
Sex Offender Program	4	2	1	5	6
<b>Total</b>	<b>71</b>	<b>27</b>	<b>13</b>	<b>84</b>	<b>103</b>

Asian/Pacific Islander					
Intervention Program	Active at Start	New Admits	Closures	Active at End	Clients Served
Iowa Domestic Abuse Program	8	6		11	14
Sex Offender Program		1		1	1
<b>Total</b>	<b>8</b>	<b>7</b>		<b>12</b>	<b>15</b>

Black					
Intervention Program	Active at Start	New Admits	Closures	Active at End	Clients Served
Drug Court Program	6	2	7	1	8
Iowa Domestic Abuse Program	97	39	17	4	136
OWI Program	2		2		2
Sex Offender Program	5	2	3	4	7
<b>Total</b>	<b>110</b>	<b>43</b>	<b>29</b>	<b>9</b>	<b>153</b>

Hispanic					
Intervention Program	Active at Start	New Admits	Closures	Active at End	Clients Served
Drug Court Program	4	9	5	7	13
Iowa Domestic Abuse Program	75	25	22	72	100
OWI Program		1	1		1
Sex Offender Program	7	3		10	10
<b>Total</b>	<b>86</b>	<b>38</b>	<b>28</b>	<b>89</b>	<b>124</b>



**White**

<b>Intervention Program</b>	<b>Active at Start</b>	<b>New Admits</b>	<b>Closures</b>	<b>Active at End</b>	<b>Clients Served</b>
Drug Court Program	41	27	35	31	68
Iowa Domestic Abuse Program	279	119	110	279	398
OWI Program	1	3	4	1	4
Restorative Justice Program	1				1
Sex Offender Program	45	34	19	61	79
<b>Total</b>	<b>367</b>	<b>183</b>	<b>168</b>	<b>372</b>	<b>550</b>

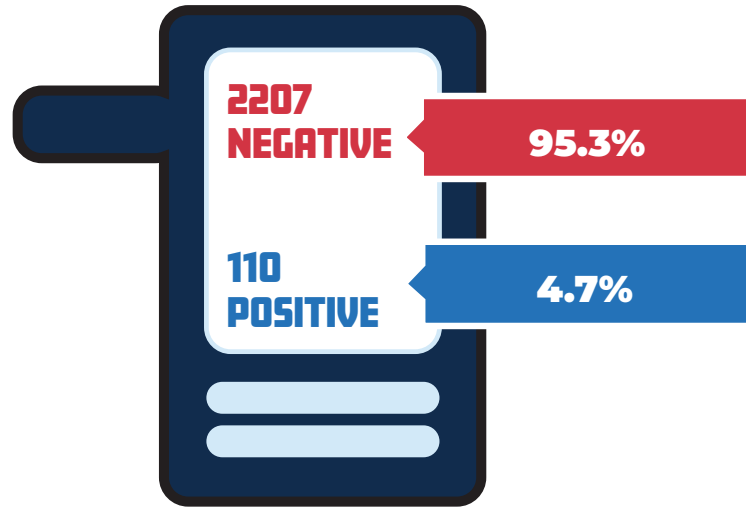
**Unknown**

<b>Intervention Program</b>	<b>Active at Start</b>	<b>New Admits</b>	<b>Closures</b>	<b>Active at End</b>	<b>Clients Served</b>
Iowa Domestic Abuse Program	110	38	26	122	148
Sex Offender Program		1		1	1
<b>Total</b>	<b>110</b>	<b>39</b>	<b>26</b>	<b>123</b>	<b>149</b>

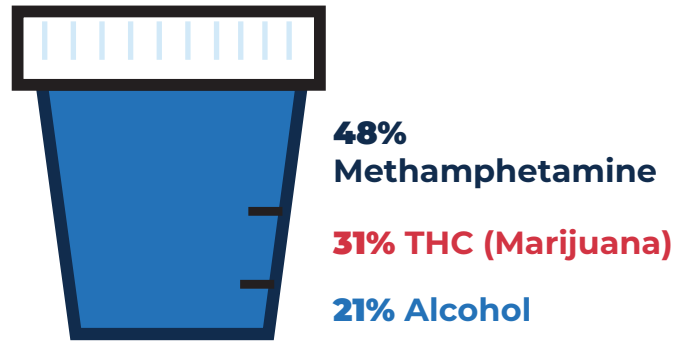
Search/Security Check	Sheldon PPO	Sioux City PPO	North RTF	South RTF	Total
Cell Phone		9	43	53	105
Computer			165	115	280
Gaming Device			1		1
Eye Count				30	30
Offsite		95	857	416	1368
Locker			93	154	247
Arrest - Violation		6			6
Employment	3	57	3		63
Furlough			335	313	648
Home Search	8	9			17
Home Visit	96	860		1	957
Home Visit - Attempted	45	446			491
Public Location Field Check		32	3		35
Transport Courtesy			1	74	75
Transport Medical				1	1
Transport Security				1	1
Vehicle Search	4	1		1	6
Visual – locating client			259	254	513
Warrant - Absconder		1		1	2
Warrant - New Charge	1	1			2
Warrant - Violation		2			2
Warrant Check - Attempted		11			11
Arrest - Violation		1			1
Body Scan				1	1
Pat	8	3	613	506	1130
Strip		5	133	89	227
K9 (Sioux City PD assist)		4	108		112
Officer		21	486	347	854
Home Confinement				1	1

Security Standards = Compliance Checks

**BREATH TESTS**



**POSITIVE URINALYSIS SUBSTANCES (TOP 3)**



Work Unit	Breath Analysis	Hair Test	Pupilometer	Saliva Test	Sweat Patch	Urinalysis	Total
Sheldon Probation/Parole Office	16			6	1	374	397
Sioux City Probation/Parole Office	368	1	1	71	23	3573	4037
Sioux City Residential Treatment Facility	741				11	1026	1778
Sioux City South RTF	1192				2	580	1774

Supervision Status	Active At Start	New Admits	Closures	Active At End	Clients Served
Sioux City Residential Treatment Facility	51	147	142	38	198
Sioux City South RTF	40	122	112	25	162
Statewide Total	91	269	254	63	360

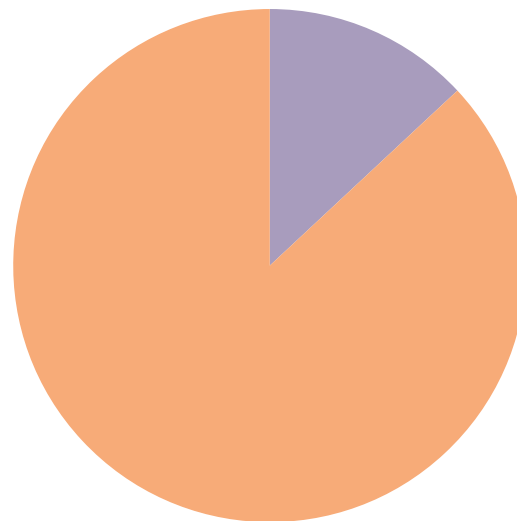
**RESIDENTIAL POPULATION BY GENDER**



**47**

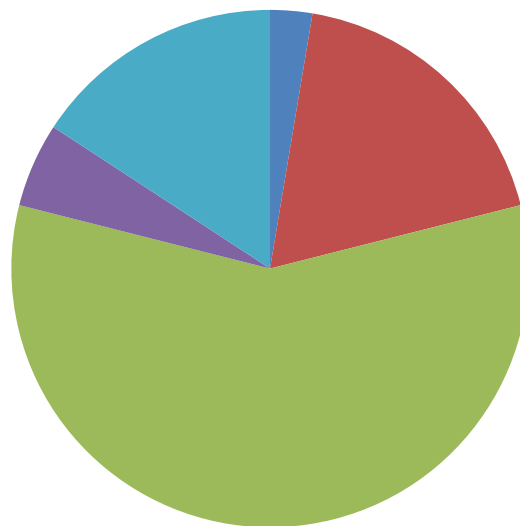


**313**



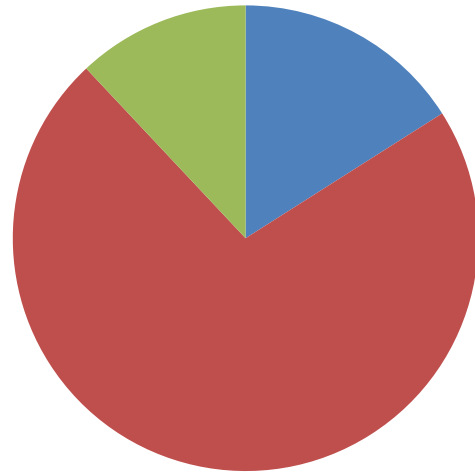
**NORTH RTF CLIENT CHARGES FOR ALL CLIENTS IN THE FACILITY ON JUNE 30, 2020**

- Felony - Enhancement to Original Penalty
- C Felony
- D Felony
- Aggravated Misdemeanor
- Special Sentence 2005



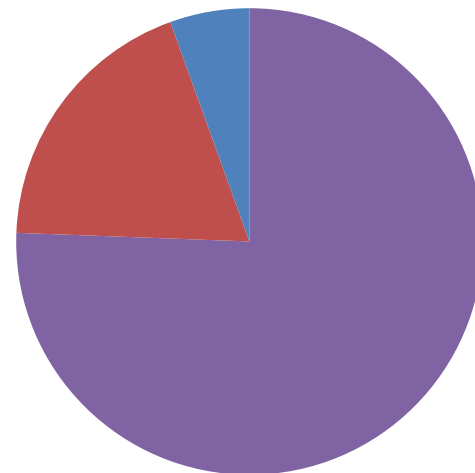
## SOUTH RTF CLIENT CHARGES FOR ALL CLIENTS IN THE FACILITY ON JUNE 30, 2020

- C Felony
- D Felony
- Aggravated Misdemeanor



## FY20 RESIDENTIAL DISCHARGE RATES

- Successful
- Unsuccessful
- Administrative Discharge



Supervision Status/ Closure Category	Success- ful	%	Unsuc- cessful	%	Admin- istrative	%	Totals	%
Interstate Compact Probation								
OWI Continuum	15	100.0%					15	5.9%
Parole	12	57.1%	7	33.3%	2	9.5%	21	8.3%
Probation	52	59.1%	31	35.2%	5	5.7%	88	34.6%
Special Sentence	17	56.7%	8	26.7%	5	16.7%	30	11.8%
Work Release	96	96.0%	2	2.0%	2	2.0%	100	39.4%
<b>Closure Category Totals/Percents</b>	<b>192</b>	<b>75.6%</b>	<b>48</b>	<b>18.9%</b>	<b>14</b>	<b>5.5%</b>	<b>254</b>	<b>100.0%</b>