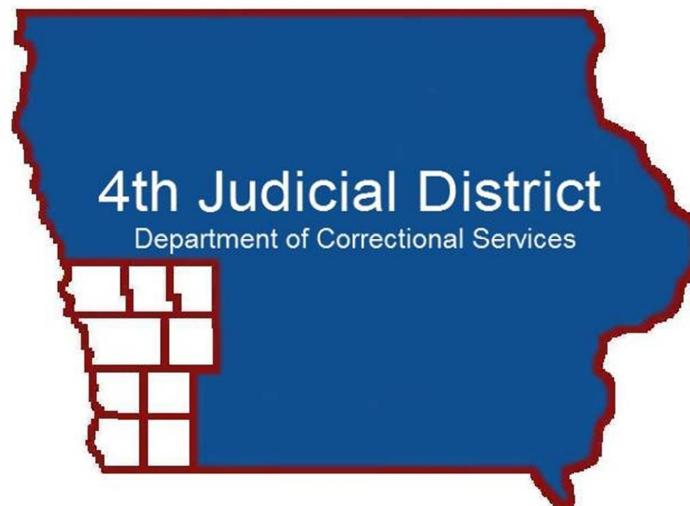


**FOURTH JUDICIAL DISTRICT  
DEPARTMENT OF CORRECTIONAL  
SERVICES**



**ANNUAL REPORT**

**FISCAL YEAR 2016**

**JULY 1, 2015 – JUNE 30, 2016**

## MESSAGE FROM THE DISTRICT DIRECTOR

September 28, 2016

Jerry Bartruff, Director  
Iowa Department of Corrections  
510 E. 12<sup>th</sup> St.  
Des Moines, IA 50319

Director Bartruff,

On behalf of the staff of the Fourth Judicial District Department of Correctional Services, I am pleased to present this Department's Fiscal Year 2016 Annual Report. This report provides information about programs in the Fourth Judicial District Department of Correctional Services from July 1, 2015 through June 30, 2016. In addition, this report is submitted for filing with the Board of Supervisors of each county in the Fourth Judicial District, per Section 905.4 of the Code of Iowa.

The Department continues to review operations and programming based on fiscal allowances. Correctional quality improvement measures are being implemented to ensure offenders are being served appropriately to ensure lowered recidivism. The Department continues to provide solid core services to the community and strives to positively impact the lives of all offenders served.

I want to sincerely thank this Department's staff for their dedication and teamwork during this past year. The work they do each day supports the mission – to advance successful offender reentry to protect the public, staff and offenders from victimization.

Sincerely,

Kip Shanks  
District Director  
Fourth Judicial District  
Department of Correctional Services

# TABLE OF CONTENTS

## Department Overview

Mission and Vision.....	1
Values, Beliefs and Goals.....	1
History.....	2
Locations.....	3
Tables of Organization.....	4-5
Board of Directors .....	6
Summary of District Board Meetings.....	7

## Advisory Committee

Victim Advisory Committee .....	8-9
---------------------------------	-----

## Basic Services

Pre-Trial Release .....	10
Pre-Sentence Investigation.....	11
Probation.....	11
Parole .....	11
Residential Facilities (RCF/RTC).....	11-13
Informal Probation .....	13
Interstate Compact .....	13

## Special Programs

Iowa Domestic Abuse Program .....	13-14
Drug Court.....	14-15
Drug/Alcohol Testing.....	15
Electronic Monitoring/GPS.....	16
High Risk Unit .....	16
Fugitive Investigation Unit .....	16
Intensive Supervision Program.....	17
Operating While Intoxicated Program .....	17
Secure Continuous Remote Alcohol Monitor .....	17
Sex Offender Treatment Program.....	17-18
Technology Assistance Unit .....	18
Transitional Housing.....	18
Community Work Crew .....	19

## FY16 Statistical Snapshots (7/1/15 – 6/30/16)

Field Services Snapshot / Field Services Closures .....	20
Pre-sentence Investigations By Offense Type and Subtype .....	20
Pre-trial Interviews.....	20
Intervention Program Snapshot / Intervention Program Closures.....	21
Intervention Snapshot.....	22
Intervention Closures.....	23
Residential Correctional Facility Snapshot / Closures .....	24
Residential Treatment Center Snapshot / Closures.....	25

**FY16 Statistical Snapshots (7/1/15 – 6/30/16) Continued**

Residential Average Daily Population .....25  
Specialty Snapshot / Specialty Closures.....26  
Probation Revocations.....27  
Probation Revocations by Supervision Status Reason for Change.....27  
Probation Revocations to Prison – Violation Behavior Codes .....28  
Non-Probation Revocations.....28  
Parole Technical Violations – No Arrest.....29  
Security Standards – Non Toxin by Type and Subtype.....30

**FY16 Financial Reports (7/1/15 – 6/30/16)**

Total Expenditures by Revenue Source ..... 31  
Total Expenditures by Cost Center .....32  
Offender Fees Collected.....32  
Total Expenditures by Major Cost Center (Orgs).....33  
Expenditures by Special Project by Revenue Source.....34  
Total Revenues by Source .....34  
Program Cost Breakdowns.....35

**FY16 Employee Training**.....36  
**Prison Rape Elimination Act (PREA) Audit**.....36  
**Drug Court Grants** .....37  
**Income Offset Program** .....37  
**FY16 Employee Information** .....37-38  
**Website** .....38  
**Department Picture**.....39

## **MISSION**

To advance successful offender reentry to protect the public, employees and offenders from victimization.

## **COMMUNITY BASED CORRECTIONS VISION**

Iowa Community Based Corrections is a place where:

- Every offender makes it and our communities are safe
- We invest in partnerships so that all members of the community have hope of succeeding
- Individual growth is encouraged and expected, and achievement is recognized
- Shared decision-making and team participation demonstrate our mutual respect
- Offenders are held accountable
- Diversity is our strength
- Innovation is valued
- We measure our results and do what we know works

## **VALUES AND BELIEFS**

- People can change
- Every person should be treated with dignity and respect
- Our efforts help make people safer
- We must work as a team if we are to succeed

## **GOALS**

- Continue to improve programs to be more consistent with Evidence Based Practices principles
- Collaborate with local agencies to advance Re-Entry in the Fourth Judicial District
- Continue compliance with Prison Rape Elimination Act (PREA) Standards
- Conduct booster trainings on the DRAOR and Iowa Risk Revised Assessment
- Implement correctional quality improvement to assess and impact quality of risk assessment process and outcomes

# FOURTH JUDICIAL DISTRICT DEPARTMENT OF CORRECTIONAL SERVICES

## DEPARTMENT OVERVIEW

### HISTORY

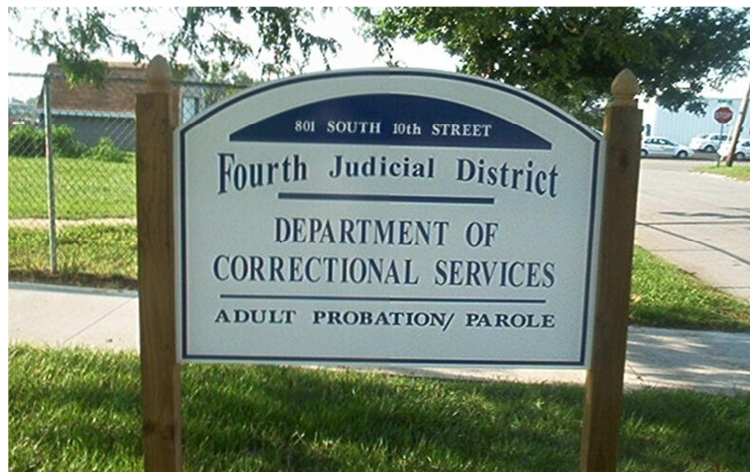
The Fourth Judicial District Department of Correctional Services is an independent public agency created and established under Chapter 905 of the Code of Iowa to provide community correctional services to the nine counties in Southwest Iowa that comprise the Fourth Judicial District.

An early community-based corrections program was established in the Council Bluffs – Pottawattamie County area in the early 1970s funded as pilot projects through the federal Law Enforcement Assistance Act (LEAA). At that time, services were provided by this program as well as by the Division of Corrections within the Iowa Department of Social Services.

In 1977, through innovative legislation passed by the Iowa Legislature, the Fourth Judicial District Department of Correctional Services was established and it assumed all community corrections functions in the District with the exception of state parole and work release which remained under State control. Also, in 1978 the first District community Residential Correctional Facility was opened in Council Bluffs.



On July 1, 1984, the State Legislature turned over the administration of adult parole and work release to the District Departments of Correctional Services from the Department of Corrections.



# LOCATIONS

## Administrative Office (A)

801 S. 10<sup>th</sup> St.  
Council Bluffs, IA 51501  
Phone: (712) 396-2200  
Fax: (712) 325-0312

## Field Office (B)

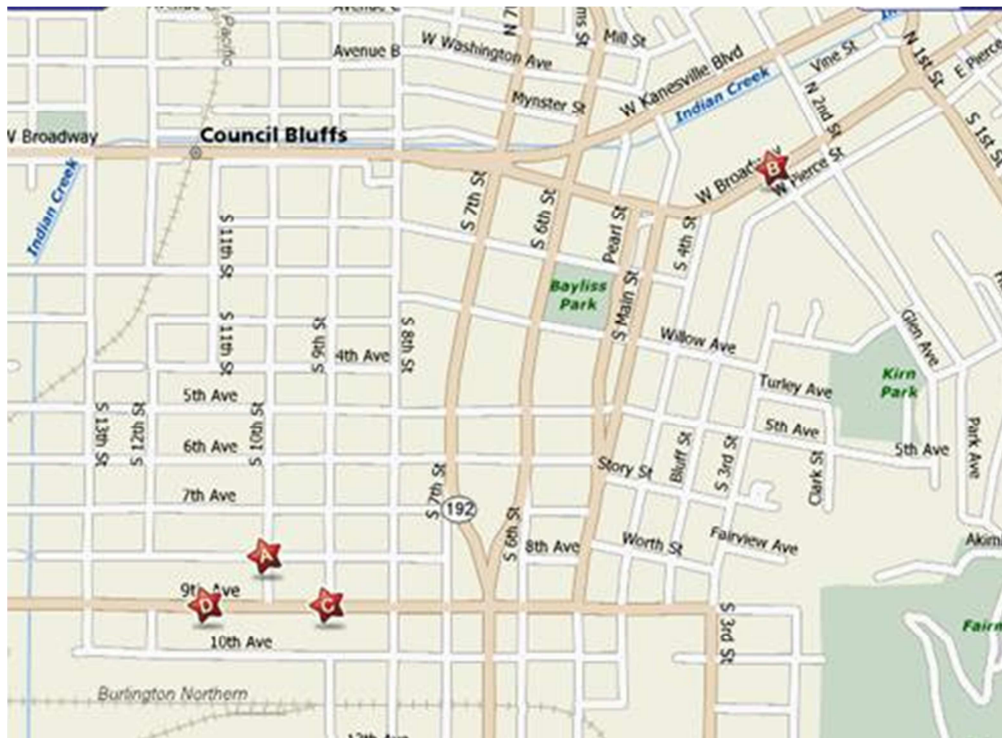
300 W. Broadway, Suite 201  
Council Bluffs, IA 51503  
Phone: (712) 396-2221  
Fax: (712) 322-4113

## Residential Correctional Facility (C)

900 9<sup>th</sup> Ave.  
Council Bluffs, IA 51501  
Phone: (712) 396-2245  
Fax: (712) 329-9115

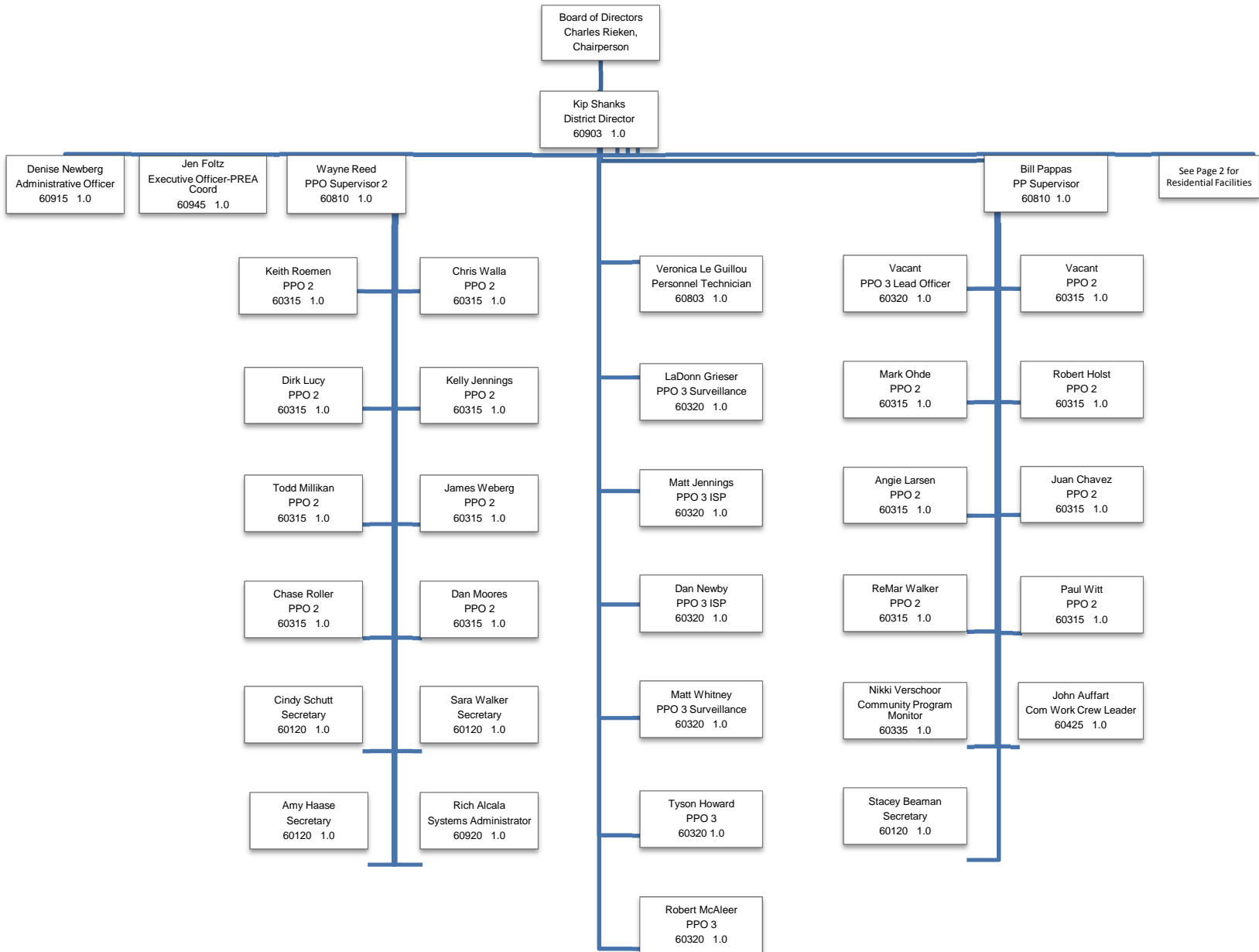
## Residential Treatment Center (D)

1102 9<sup>th</sup> Ave.  
Council Bluffs, IA 51501  
Phone: (712) 396-2216  
Fax: (712) 323-3602



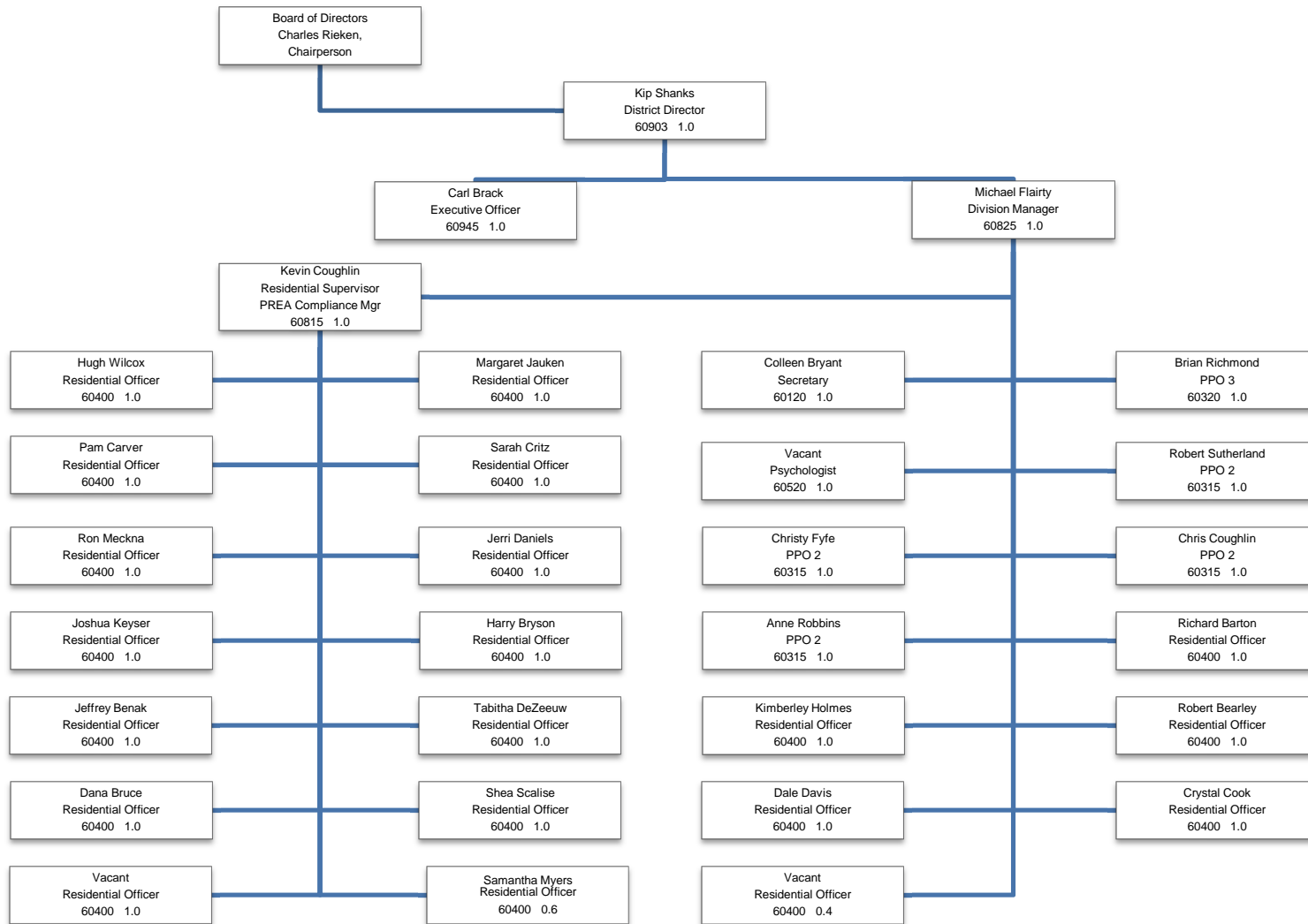
Employee phone numbers are located at [www.fourthdcs.com](http://www.fourthdcs.com)

## Table of Organization – Probation / Parole Branches 06/30/2016





## Table of Organization - Residential Branches 6/30/2016



## **BOARD OF DIRECTORS**

Charles Rieken, Cass County Supervisor  
Chairperson

Lonnie Mayberry, Mills County Supervisor  
Vice Chair

Cara Marker-Morgan, Fremont County  
Executive Committee Member

Lindsay E. Andersen  
Citizen Delegate

Honorable Kathleen Kilnoski  
Judiciary Delegate

Lynn Grobe, Pottawattamie County Supervisor

Larry King, Harrison County Supervisor

Jim Richardson, Page County Supervisor

Roger Schmitz, Shelby County Supervisor

Gary VanAernam, Audubon County Supervisor

Josh Wiig, Montgomery County Supervisor

## SUMMARY OF DISTRICT BOARD OF DIRECTORS MEETINGS

The Board of Directors for the Fourth Judicial District Department of Correctional Services meets at 1:30pm on the fourth Wednesday each January, April, June and September, at the Department's Administrative Office. Copies of the minutes are available upon request. Additional Board information may be found online at [www.fourthdcs.com](http://www.fourthdcs.com).

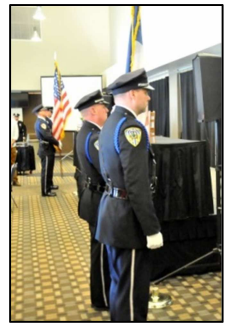
The Board reviewed, discussed and approved the following:

- Department's purchase of service agreement between the Iowa Department of Corrections and the Fourth Judicial District
- District Director's Expense Reimbursement Claims
- Audit of the District's financial operations in which no significant deficiencies were found
- End of the year financial reports for FY16
- All quarterly budget variance reports
- All staff adjustments
- FY17 Budget request

# VICTIM ADVISORY COMMITTEE

In an effort to enhance victim services, the Fourth Judicial District developed a Victim Advisory Committee in 2007. The committee is made up of District employees and personnel from outside agencies within the Fourth Judicial District. The principle role of the committee is to offer guidance and support to the management team in all matters related to victim/witness assistance, including program and policy development and implementation. The committee was instrumental in developing two policies and victim notification procedures.

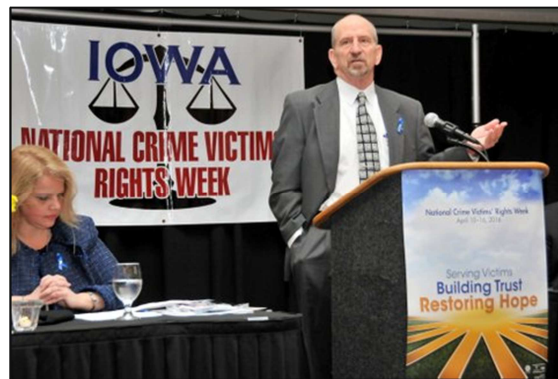
The 9th Annual National Crime Victims' Rights Week ceremony was held during National Crime Victim's Rights Week in April, 2016. The event was sponsored by the Pottawattamie County Board of Supervisors and emceed by Malorie Maddox. The ceremony began with the Council Bluffs Police Department's Honor Guard presenting the Colors. Opening remarks were provided by Assistant United States Attorney, Richard E. Rothrock. The program panelists Kirk Nielsen, Matt Wilber, Julie Medina and Heather Richardson, who shared the story of her sister, Holly Durben. The program closed with a special tribute in honor of Kim Clark.



Committee members include: Becky Belt, Auditor's Office, Pottawattamie County; Jill McAleer, Victim Assistance, Pottawattamie County; Pattie Lant, Victim Assistance, Fremont County; Nichole Curry, Alicia Gehrman & Shelly Miles, Victim Assistance, Pottawattamie County; Katie Choquette & Carrie Potter, Catholic Charities/Phoenix House; Roxanne Johnson, Family Crisis Centers; Steve Weis, Clarinda Correctional Facility; Veronica LeGuillou, Personnel Technician and Jen Foltz, Executive Officer.



Luncheon Venue



Richard E. Rothrock



Julie Medina



Heather Richardson



Arrangement



Matt Wilber presenting plaque to Roger Clark



### Victim Advisory Committee

Front from Left: Alicia Gehrman, Katie Choquette, Jill McAleer, Steve Weis, Malorie Maddox (Emcee), Heather Richardson (Speaker), Roxanne Johnson, Becky Belt & Jen Foltz

Not Pictured: Pattie Lant, Veronica LeGuillou, Shelly Miles & Carrie Potter

## BASIC SERVICES

### Intermediate Criminal Sanctions

This continuum is a sentencing option available to the Court under 901B of the Code of Iowa. The continuum consists of five levels:

- Level 1 – Non community-based corrections sanctions including fines and non-community based supervision
- Level 2 – Probation and Parole
- Level 3 – Quasi-incarceration sanctions including violator’s program and residential correctional facility placement and house arrest using electronic monitoring/GPS
- Level 4 – Short-term incarceration, including the violator programs
- Level 5 – Incarceration

The law allows the District authority to make administrative decisions regarding the supervision of community-based offenders within levels 2, 3 and parts of 4.

The continuum:

- Uses a team approach to ensure fair and consistent decisions
- Uses intermediate community-based sanctions
- Provides immediate response to offender needs and accountability for behavior
- Reduces court time needed to conduct revocation hearings

### Program Definitions

The Fourth Judicial District Department of Correctional Services provides comprehensive adult community based corrections programming. Simply, the District provides all correctional services except prison incarceration. All District services and programs are included in a group of intermediate criminal sanctions ranging from no active supervision up to actual prison incarceration. Basic community corrections services are offered in addition to a wide array of special programs and treatment services.

### Pre-trial Release

Pre-trial Release provides an alternative to the traditional bail bond system. Arrestees are assessed for their public safety and flight risk pending disposition of their criminal case. Recommendations are made to the court regarding appropriateness for release from jail that may include release on own recognizance (ROR), release with supervision (RWS), release with bail (RWB), etc., or no release. If release is ordered with supervision, the defendant’s whereabouts and activities are monitored to ensure that all court appearances and obligations are met. Identified criminogenic needs are addressed for early intervention.

## Pre-sentence Investigation

This service is a primary tool to assist judges in determining appropriate sentence alternatives that most effectively serve the offender and wisely utilize correctional resources. The report submitted to the district court includes an extensive history of the defendant's criminal, social, family, education, employment and psychological background. Sentencing alternatives are presented to the court based on the investigation. This District also provides criminal history record checks to the courts for the Judge's consideration in sentencing.

## Probation

Probation is the supervised release of adjudicated adult individuals in the community as a result of a suspended sentence, a deferred sentence or a deferred judgment. Probation provides a major alternative to institutionalization whereby convicted misdemeanants and felons remain in the community under supervision. Probation supervision includes risk and needs assessments, case planning and referral to community agencies. Offender behavior is monitored through urinalysis testing, breath analysis, electronic monitoring/GPS, surveillance and collateral contacts. Officers maintain regular contact with the offender and their significant others.

## Parole

Parole is the supervised conditional release of offenders released from the state's correctional institutions by the Board of Parole. Parole can also be granted directly from a Residential Correctional Facility after the offender has served residential facility time on work release. This program is very similar to probation and in many instances the probation and parole officers are one and the same.

## Residential Facility Services

Residential services provide supervision of offenders demonstrating an inability or unwillingness to function under less restrictive program supervision. Work Release services provide offenders a transitional period to become adjusted to working and living in the community after incarceration.

There are two residential facilities in the Fourth Judicial District. The residential facilities provide highly structured live-in supervision of problematic, high risk and/or high needs offenders. A myriad of treatment, education and related services are provided by the facilities. The offenders are sentenced by the court, parolees or work releasees from one of the nine state penal institutions.

The Residential Correctional Facility (RCF) is located at 900 9<sup>th</sup> Avenue and houses male and female offenders.

The Residential Treatment Center (RTC) is located at 1102 9<sup>th</sup> Avenue in Council Bluffs and houses male sex offenders and male offenders going through the Operating While Intoxicated Program.



Residential Correctional Facility



Residential Treatment Center

The District opened its first Residential Correctional Facility (RCF) with male offenders in February, 1977 at 900 South 7<sup>th</sup> Street in Council Bluffs, Iowa. In February, 1984, the facility moved to its present location at 900 9<sup>th</sup> Avenue as a co-ed facility. The District opened the Residential Treatment Center (RTC) on August 18, 2003 as a Women's Residential Correctional Facility. In the fall of 2012, a wing at the RCF was renovated to house female offenders. The Women's Residential Correctional Facility then re-opened as a Residential Treatment Center housing all offenders sentenced on a sex offense in the Fourth Judicial District for an initial diagnostic and evaluation period. The OWI offenders moved from the RCF to the RTC on January 15, 2015.

The RCF can house sixty-one (61) male offenders and sixteen (16) female offenders. The RTC can house forty-six (46) male offenders. The average stay at the facilities is between three (3) and six (6) months.

Offenders are required to obtain employment and address treatment needs as directed by the court or identified by evaluation which is required due to past and current alcohol or drug offenses. Offenders are required to meet financial obligations such as child support, victim restitution, court costs, etc.



## **Programs Available to Offenders at the Facilities**

- Community Service
- Hope Net Ministries
- Sex Offender Treatment Program
  - Treatment Referrals
- Operating While Intoxicated Program

### **Informal Probation**

The Informal Probation program began on January 1, 2014, and is a program primarily intended for first-time or low-risk offenders. Offenders supervised on Informal Probation are responsible for completing all court-ordered requirements, including all financial obligations associated with the case(s). Even though the Court places an offender on Informal Probation for a period of time, they may be discharged once verification of all completed court-ordered conditions is received by the Department.

### **Interstate Compact**

Interstate Compact is the transfer of an offender's supervision between states. Offenders supervised are usually on probation or parole and are handled similar to Iowa offenders under supervision. In addition, courtesy pre-sentence investigations are performed for and by other states upon request.

## **SPECIAL PROGRAMS**

### **Iowa Domestic Abuse Program (IDAP)**

The Iowa Domestic Abuse Program (IDAP), formerly known as Batterer's Education Program (BEP), provides a group education process for men and individual programming for women who practice a pattern of abusive behavior. As required by Iowa law, the District provides domestic abuse groups for persons convicted of domestic abuse, persons referred from other agencies and volunteers. After an extensive orientation session, offenders are placed in groups which meet weekly for twenty-four (24) weeks for men and sixteen (16) weeks for women. The District contracts with Southwest Iowa Families Incorporated, 215 East Washington, Clarinda, Iowa, phone 712-542-3501, to provide the groups.

Statistical analysis of the program indicated that individuals who completed the program were somewhat less likely to be re-arrested for domestic abuse assault than were persons who had been terminated from the program.

## Drug Court

Drug Court is a special court with the responsibility of handling cases involving drug-using offenders with the capability of comprehensive supervision, drug testing, treatment services and immediate sanctions and incentives. It is a diversion program designed to divert non-violent substance abusing offenders from the criminal justice system into treatment and rehabilitative programming.

The Fourth Judicial District's Drug Court has been operating since January 3, 2000. Drug Court convenes every Wednesday morning following a team conference reviewing each participant's progress. The Drug Court program is a minimum of eighteen (18) months and has four phases, including an intensive treatment continuum with weekly interaction with each participant.

The Drug Court is a post adjudication model. Following a plea by the offender, the offender is "sentenced" to Drug Court to fully comply with the program. Failure to do so may result in serving the initial sentence. Successful completion of the program will result in a dismissal of the criminal offense. The participants may elect to withdraw their plea within the first four (4) weeks, or prior to the completion of inpatient treatment, whichever is longer, and the team may return the participant to the criminal docket to stand trial during that period. Upon transfer of the offender to Drug Court, further proceedings in criminal court are stayed pending final disposition of each case.

Non-violent drug offenders and drug related offenders are eligible for Drug Court. This includes offenders manufacturing for themselves to support their addiction and probation violators. A history of violence, including domestic abuse, possession or use of weapons may be excluding factors for admission into the program. Individuals with a history of severe mental problems may also be excluded. Drug dealers and large-scale manufacturers are excluded.

All applicants must be screened prior to being accepted. A Substance Abuse Subtle Screening Inventory (SASSI 3) and Iowa Risk Revised Assessment are utilized to assess the offender. Further screening includes the Jesness, an intake offender self-assessment and intake gambling self-assessment.



### Drug Court Team

Pictured Front Row from Left: Marty Heinecke and Kelly Jennings

Pictured Back Row from Left: Brad Davis, Mark Neseth, Wayne Reed, Judge Greg Steensland, Jerad Poore and Keith Roemen

## Drug Court Sanctions and Cognitive Approach

### Sanctions

Drug Court uses an escalating series of sanctions consistent with the Iowa Code and Policy 121, Intermediate Sanctions. Actions are immediate, related to the offense, start with the least intrusive, not imposed in anger or for reasons other than to obtain a change in behavior, with alternative positive behaviors provided following the sanction. In the imposition of sanctions, awareness of the “law of unintended consequences” is kept in mind. Attempts are made to have a ratio of one (1) sanction to four (4) rewards. The goal is long-term change extending beyond graduation from Drug Court.

### Cognitive Model

Drug Court follows the cognitive approach in dealing with offenders. Drug Court offenders keep journals and complete other written exercises in treatment programs to address behavioral and attitudinal issues.

### Drug Court Goals

- Reduce recidivism among drug offenders by employing the most effective use of existing resources for substance abuse treatment.
- Alter lifestyle of the offender to return them to productive and sober citizenship.
- Present effective alternatives to prison overcrowding and early release issues.
- Create a program which restores confidence in the courts and correctional services while saving dollars for the citizens of our city and county.

### Drug/Alcohol Testing

Drug and alcohol-free offenders are an important aspect of the Districts programs. The District conducts urinalysis testing on a regular basis. The District arranges for laboratory backup testing on cases where serious violations are found. The District also has on-site alcohol testing equipment available and conducts frequent tests on suspected alcohol abusers.

	Negative	Positive	Total
Blood Test	8		8
Breath Analysis	8,051	68	8,119
Saliva Test	3,152	140	3,292
Sweat Patch	94	3	97
Urinalysis	66,745	1,560	68,305
<b>Total</b>	<b>78,050</b>	<b>1,771</b>	<b>79,821</b>

## Electronic Monitoring and GPS

Electronic Monitoring is an adjunct to other community based correctional supervision and treatment. The goal of this program is to monitor compliance with offender movements in the community to enhance public safety. The District is utilizing the latest innovations in electronic surveillance to more effectively monitor high risk offenders. The District currently uses active monitoring units, mostly utilized by the High Risk Unit officers.

Global Positioning Satellite (GPS) is the most innovative electronic surveillance technology used by criminal justice agencies. The system combines GPS technology and advanced wireless communication protocols, flexible reporting and unique mapping capabilities to effectively track offenders twenty-four (24) hours a day, seven (7) days a week. The Central Command Center (CCC), located in Des Moines, Iowa, is the main information area.

The District's GPS equipment is used to monitor offenders' whereabouts at all times. The CCC is immediately alerted when an offender is in violation of the GPS rules or is experiencing equipment issues that require immediate attention. If immediate action is needed, the CCC will contact designated District staff to respond accordingly.

Utilization of GPS by District staff can enhance public safety while maintaining offender accountability. As of June 30, 2016, there were forty-nine (49) offenders being supervised by GPS.

## High Risk Unit

The High Risk Unit (HRU) is a special public safety unit established within the Department. High risk offenders include those convicted of violent crimes or having a history of violent crimes. Sex offenders are also considered to be high risk and are supervised by HRU Officers. The HRU is staffed with Intensive Supervision Officers, Sex Offender Officers, Surveillance Officers and Fugitive Investigators. The District Director is designated as Chief of this public safety unit. The HRU includes sworn officers who have been trained and certified by the Iowa Law Enforcement Academy or qualify under IAC 40.4 (12). The HRU has recently been involved with fugitive captures, assisting other agencies on special enforcement projects, computer searches, task force operations and seizures of firearms and narcotics. Members of the HRU also educate the community on the role of the unit at various speaking engagements each year.

## Fugitive Investigation Unit

The District developed a Fugitive Investigation Unit in June, 1997, as a response to work overloads in most law enforcement agencies because their personnel did not have time to dedicate to the pursuit of correctional offenders for whom active arrest warrants existed. Selected staff members from the Intensive Supervision Unit comprise the Fugitive Investigation Unit. The Fugitive Investigation Unit is responsible for investigating the whereabouts and locating all probation, parole, work release and sex offender absconders who have valid warrants. The Fugitive Investigation Unit works in cooperation with all local, state and federal law enforcement agencies and has served over 2,500 felony warrants since its inception.

## Intensive Supervision Program

The Intensive Supervision Program (ISP) is a specialized program of greatly enhanced supervision of high risk offenders on probation or parole. Specialized Probation/Parole Officers are assigned a small caseload of high risk offenders to supervise. Instead of having face-to-face contact with the offender monthly under normal supervision, ISP officers have numerous contacts with the offender weekly. Drug testing, curfew surveillance and offender accountability are emphasized with most officer activity occurring in the evening. Officers are equipped with a vehicle, police equipment and electronic monitoring equipment. High risk offenders include those convicted of violent crimes or having a history of violent crimes. Sex offenders are also considered to be high risk and are supervised by ISP officers.

ISP may also be used as an intermediate sanction for non-compliant offenders on regular supervision caseloads. ISP caseloads are held to a maximum of twenty-five (25) offenders so the officer can spend more time with each offender. ISP officers visit these offenders on the weekends and evenings, as well as during the day. The time spent with the offender can be in helping the offender change, or if the offender is unwilling to change, to monitor the offender for compliance.

## Operating While Intoxicated Program

An intense substance abuse treatment program is provided to all offenders serving a sentence for O.W.I. 2<sup>nd</sup> or subsequent offenses. These offenders are diverted to this specialized program which is contracted through Heartland Family Services. Offenders are required to complete the thirty (30) week program, attend weekly twelve (12) step meetings, obtain a sponsor and maintain full time employment. Failure to comply at the community level may result in prison incarceration.

## Secure Continuous Remote Alcohol Monitor (SCRAM)

The District is using the Secure Continuous Remote Alcohol Monitor (SCRAM) on offenders which provides 24/7 alcohol detection with house arrest technology. The SCRAM program assists with offender accountability, public safety and rehabilitation of the offender. The program is designed to aid offenders currently engaged in substance abuse treatment who require additional monitoring and accountability.

## Sex Offender Treatment Program

The Sex Offender Treatment Program (SOTP) is designed to provide treatment to offenders who commit sex crimes. The program involves assessment, evaluation and specialized treatment groups. In addition to the treatment program these offenders are monitored on a specialized caseload. The goal of the SOTP is to reduce the risk of further sexual victimization through participation in the treatment program and intensive supervision. The treatment program uses a cognitive behavioral model. Topics covered include victim empathy, cognitive distortions, relapse prevention, relationship skills and healthy sexuality. Polygraph examinations are also used as a treatment tool to assist offenders to take responsibility for their deviant thoughts and behaviors.

The District opened a Diagnostic and Treatment Center in the fall of 2012. All sex offenders in the District are initially evaluated and risk assessed at the Diagnostic and Treatment Center. This allows for a thorough evaluation of all offenders prior to community placement and reduces the likelihood of high risk offenders being prematurely placed into the community.

## Technology Assistance Unit

The Technology Assistance Unit is comprised of specially trained HRU Officers who assist other Probation/Parole Officers and outside Law Enforcement agencies in technology issues involving computers, computer related equipment and cell phones. The Technology Assistance Unit can conduct computer examinations and cell phone examinations using the latest techniques and equipment.

## Transitional Housing



In June 2013, the Department submitted a grant proposal to the Council Bluffs Housing Trust Fund to assist in the purchase of a single-family residence adjacent to current property to use for transitional housing. In July 2013, the Department was awarded a \$50,000 grant to assist in the purchase of the residential property located at 901 8<sup>th</sup> Avenue in Council Bluffs. After extensive renovation, offenders began living at the house in November, 2014. The house has been a great resource for parolees coming out of prison while they wait for their disability benefits to get reinstated.

The Department purchased the residence to support community reentry of offenders by addressing one of the major barriers faced by offenders – suitable housing. In addition, offenders who received disability benefits prior to incarceration have a 2-3 month waiting period before their benefits are reinstated after being released from prison. These individuals are not eligible to have their benefits

reinstated if they are living in a residential correctional facility, so work release is not an option for these offenders. The house provides these offenders a place to reside until their benefits are reinstated and then they can transition into housing of their own.

Admission criteria includes the following: male offenders who are unable to work and/or were on disability prior to incarceration. Sex offenders are eligible for placement if they meet the above criteria and are approved by the Sex Offender Review Team. Offenders will be able to live in the house until their disability benefits are reinstated, approximately 60-90 days. Offenders will be required to pay a minimal monthly rent fee to reside at the house.

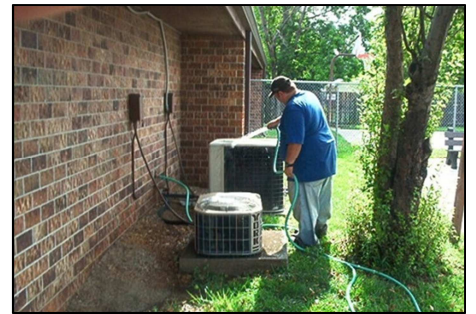
## Community Service

### Community Work Crew



The purpose of the Community Work Crew is to provide an opportunity for offenders on probation or parole to pay retribution to their community in the form of volunteer work. Supervised by a work crew leader, these offenders work in various capacities in Pottawattamie County recreational and public works facilities. Projects include park, city, county maintenance and other non-profit organizations. The work holds offenders accountable for their crimes as well as gives them a feeling of ownership to their community.

The work crew also provides an opportunity to train offenders on various types of trades and educates them with different types of skills. This is very beneficial for the offender to help with employment placement in the future. To qualify for completion of a project, an agency or organization must submit a request for assistance in completing a project that is non-funded. The work crew does not replace agency staff, but supplements their non-funded needs. Materials and construction resources must be provided by the community agency.



### Community service projects completed during FY16 include:

- Maintenance of buildings and grounds equipment
- Pick up trash in city parks
- Mow grass for Habitat for Humanity
- Renovation of Transitional House
- Assisted the Council Bluffs Police Department remove homeless camps along the Missouri River
- Assisted the Council Bluffs Police Department pick up litter in Council Bluffs
- Built a new clerical area in the Administrative Office

During FY16, there were 4,402 hours of community service performed.

## Field Services Snapshot

Supervision Status	Active at Start	New Admits	Closures	Active at End	Offenders Served
Interstate Compact Parole	33	20	26	27	53
Interstate Compact Probation	98	41	64	73	139
Parole	120	125	115	138	245
Pretrial Release With Supervision	49	86	96	38	135
Probation	1,796	1666	1,246	2,168	3,462
Special Sentence	51	12	16	60	63
<b>Total</b>	<b>2,147</b>	<b>1,950</b>	<b>1,563</b>	<b>2,504</b>	<b>4,097</b>

## Field Services Closures

Supervision Status \ Reason For Change	Administrative	Intermediate Sanction	Successful	Unsuccessful	Total
Interstate Compact Parole	8		18		26
Interstate Compact Probation	18		46		64
Parole	1	25	49	40	115
Pretrial Release With Supervision			94	2	96
Probation	92		861	293	1,246
Special Sentence		2	6	8	16
<b>Total</b>	<b>119</b>	<b>27</b>	<b>1,074</b>	<b>343</b>	<b>1,563</b>

## Pre-sentence Investigations

Form Type	Count
Pre-Sentence Investigation	45
Informal	1,035
Pre-Plea	1
Post-Conviction	5
<b>Total</b>	<b>1,086</b>

## Pre-Trial Interviews

799



## Intervention Program Snapshot

Intervention Program	Active at Start	New Admits	Closures	Active at End	Offenders Served
Drug Court Program	37	7	23	21	44
Iowa Domestic Abuse Program	37	69	66	41	106
OWI Program	5	2	5	2	7
Sex Offender Program	99	29	33	90	128
Sex Offender Registry Modification Evaluation – Adult Not On Supervision		3		3	3
Sex Offender Registry Modification Evaluation – Adult On Supervision	1		1		1
TASC Program	1			1	1
<b>Total</b>	<b>180</b>	<b>110</b>	<b>128</b>	<b>158</b>	<b>290</b>

## Intervention Program Closures

Intervention Program / Closure Category	Administrative	Successful	Unsuccessful	Total
Drug Court Program	1	17	5	23
Iowa Domestic Abuse Program	2	46	18	66
OWI Program	1	4		5
Sex Offender Program	1	22	10	33
Sex Offender Registry Modification Evaluation – Adult Not On Supervision				
Sex Offender Registry Modification Evaluation – Adult On Supervision		1		1
<b>Total</b>	<b>5</b>	<b>90</b>	<b>33</b>	<b>128</b>

## Intervention Snapshot

Internal Intervention	Active at Start	New Admits	Closures	Active at End	Offenders Served
Drug Court-Case Management-Council Bluffs	31	6	22	15	37
Drug Court Group-Council Bluffs	6	9	7	8	15
Drug Court Social Activities-Council Bluffs	13	8	11	10	21
Drug Court-Substance Abuse Evaluation-CB		1	1		1
Mental Health Therapy - Jackie Paxton	1			1	1
Sex Offender-Clinical Staffing-Council Bluffs	40		32	11	40
Sex Offender-Maintenance Polygraph-CB	2	47	47	2	49
Sex Offender-Maintenance Treatment-CB	15	27	20	22	42
Sex Offender-Primary Treatment	31	9	44		40
Sex Offender-Psychosexual Evaluation-CB	7	10	16	2	17
Sex Offender-Sexual History Polygraph-CB	1	20	21		21
Sex Offender-Specific Issue Polygraph-CV		1	1		1
SOTP-Track I-Cognitive Restructuring-CB		21	12	9	21
SOTP-Track II-Treatment Responsibility-CB		1	1		1
SOTP-Track II-Victim Awareness-CB		1	1		1
SOTP-Track 1-Relationship & Interpersonal & Skills-CB		11		11	11
SOTP-Track 1-Sexuality-CB		11	10	1	11
SOTP-Track 1-Treatment Responsibility-CB		5	5		5
SOTP-Track 1-Victim Awareness-CB		11	10	1	11
Thinking for a Change – Council Bluffs	8	22	23	7	30
<b>Total</b>	<b>155</b>	<b>221</b>	<b>284</b>	<b>100</b>	<b>376</b>

## Intervention Closures

Intervention / Closure Category	Administrative	Intermediate Sanction	Successful	Unsuccessful	Total
Drug Court-Case Management-Council Bluffs			17	5	22
Drug Court Group-CB			5	2	7
Drug Court Social Activities-Council Bluffs		1	6	4	11
Drug Court-Substance Abuse Evaluation-CB			1		1
Sex Offender-Clinical Staffing-Council Bluffs	19		10	3	32
Sex Offender-Maintenance Polygraph-Council Bluffs			35	12	47
Sex Offender-Maintenance Treatment-Council Bluffs	4	4	8	4	20
Sex Offender-Primary Treatment	4	2	35	3	44
Sex Offender-Psychosexual Evaluation-Council Bluffs	8		8		16
Sex Offender-Sexual History Polygraph-Council Bluffs			12	9	21
Sex Offender-Specific Issue Polygraph-Council Bluffs				1	1
SOTP-Track I-Cognitive Restructuring-Council Bluffs		1	11		12
SOTP-Track II-Treatment Responsibility-Council Bluffs	1				1
SOTP-Track II-Victim Awareness-Council Bluffs			1		1
SOTP-Track I-Relationship & Interpersonal & Skills-CB					
SOTP-Track I-Sexuality-CB		1	8	1	10
SOTP-Track I-Treatment Responsibility-Council Bluffs			5		5
SOTP-Track I-Victim Awareness-Council Bluffs			10		10
Thinking for a Change - CB	2		16	5	23
<b>Total</b>	<b>38</b>	<b>9</b>	<b>188</b>	<b>49</b>	<b>284</b>

## Residential Correctional Facility Snapshot

### Female Offenders

Supervision Status	Active At Start	New Admits	Closures	Active At End	Offenders Served
OWI Continuum			1		
Parole		2	1	1	2
Probation	9	25	15	7	34
Work Release	4	16	11	5	20
<b>Total</b>	<b>13</b>	<b>43</b>	<b>28</b>	<b>13</b>	<b>56</b>

### Male Offenders

Supervision Status	Active At Start	New Admits	Closures	Active At End	Offenders Served
Interstate Compact Parole		1			1
Interstate Compact Probation		2			2
Jail (Designated Site)	1		1		1
OWI Continuum		1	1		1
Parole		3	2	1	3
Probation	29	75	57	24	104
Special Sentence		1	1		1
Work Release	28	104	73	22	132
<b>Total</b>	<b>58</b>	<b>187</b>	<b>135</b>	<b>47</b>	<b>245</b>

## Residential Correctional Facility Closures

### Female and Male Offenders

Supervision Status / Closure Category	Successful	Unsuccessful	Total
Interstate Compact Parole			
Interstate Compact Probation			
Jail (Designated Site)	1		1
OWI Continuum	2		2
Parole	3		3
Probation	70	2	72
Special Sentence	1		1
Work Release	84		84
<b>Total</b>	<b>161</b>	<b>2</b>	<b>163</b>

## Residential Treatment Center Snapshot

Supervision Status	Active At Start	New Admits	Closures	Active At End	Offenders Served
Interstate Compact Parole		3	1	2	3
OWI Continuum	1	2	1	1	3
Parole		1	1		1
Probation	15	13	28	6	28
Special Sentence	8	19	17	8	27
Work Release	5	7	9	5	12
<b>Total</b>	<b>29</b>	<b>45</b>	<b>57</b>	<b>22</b>	<b>74</b>

## Residential Treatment Center Closures

Supervision Status / Closure Category	Successful	Administrative	Total
Interstate Compact Parole	1		1
OWI Continuum	1		1
Parole	1		1
Probation	27	1	28
Special Sentence	16	1	17
Work Release	8	1	9
<b>Total</b>	<b>54</b>	<b>3</b>	<b>57</b>

## Average Daily Population

Residential Correctional Facility – 64.75

Residential Treatment Center – 25.92

## Specialty Snapshot

Specialty	Active at Start	New Admits	Active at End	Closures	Offenders Served
Day Reporting - Residential	3	19	1	22	22
Drug Court Supervision	39	36	50	25	75
Global Positioning - Satellite	53	119	49	123	172
Home Confinement - Federal Offender	0	1	1	0	1
Intensive Supervision	62	96	78	80	158
Intensive Supervision - Pretrial Release	0	2	0	2	2
Intensive Supervision - Sex Offenders	38	29	32	35	67
Intensive Supervision - Team	2	0	0	2	2
Low Risk Probation	478	932	981	429	1,410
Mental Health Court	0	10	9	1	10
OWI Pre-Placement	0	1	0	1	1
SCRAM	4	9	8	5	13
WOCMM	126	101	121	110	227
<b>Total</b>	<b>805</b>	<b>1,355</b>	<b>1,330</b>	<b>835</b>	<b>2,160</b>

## Specialty Closures

Specialty	Administrative	Intermediate Sanction	Successful	Unsuccessful	Total
Day Reporting - Residential	14	4	4		22
Drug Court Supervision	1		17	7	25
Global Positioning - Satellite	58	11	35	19	123
Intensive Supervision	22		18	40	80
Intensive Supervision - Pretrial	1		1		2
Intensive Supervision - SOs	23		7	5	35
Intensive Supervision - Team	1		1		2
Low Risk Probation	51	1	336	41	429
Mental Health Court			1		1
OWI Pre-Placement			1		1
SCRAM		1	4		5
WOCMM	37	3	45	25	110
<b>Total</b>	<b>208</b>	<b>20</b>	<b>470</b>	<b>137</b>	<b>835</b>

## Probation Revocations

### Revocation Category Reason

New Felony / Aggravated Conviction	18
Other New Conviction	12
New Arrest	5
New Arrest - ICON	17
Other Violation - No Arrest	16
Other - No Report of Violation Data	0
<b>Total</b>	<b>68</b>

1. New Felony/Aggravated Misdemeanor Conviction (data from ICIS)
2. New conviction other than Felony/Aggravated convictions (data from ICIS)
3. New arrest (data pulled from ICIS)
4. No arrests/convictions in ICIS, however, Violation Report in ICON contains a violation behavior code of "New Arrest" (data from ICON)
5. No new arrests/convictions, technical violations only (data from ICON)
6. No new arrests/convictions, however, no Violation Report in ICON

## Probation Revocations by Supervision Status Reason for Change

### Supervision Status Reason for Change

Discharged - Contempt	
Discharged – Expiration of Sentence	
Discharge – Early Discharge	
Returned to Sending Jurisdiction	
Revoked	68
Revoked - Served in Jail	
Revoked – Time Served	
Terminated by Court	
<b>Total</b>	<b>68</b>

## Probation Revocations to Prison – Violation Behavior Codes

### Violation Behavior Codes by Hierarchy

Violation of No Contact Order	
Illegal Activity Without Arrest	
Physical Abuse	
Physical Contact Sexual Misconduct	1
Other Prohibited Contact	2
Emotional / Verbal Abuse	
Escaped from Confinement / Custody	1
Failure to Report / Return / Absconion	4
Unauthorized Distribution of Alcohol or Drugs	
Use/Possession of Alcohol or Drugs / Paraphernalia	7
Out of Place of Assignment / Unauthorized Location	
Quit without Authorization	
Terminated / Failure to Participate in Treatment	1
Violation of Special Conditions - Other	
None	
Failure to Maintain Contact	
Failure to Submit to Security Standard	
Failure to Pay Court-Ordered Fines / Restitution	
<b>Total</b>	<b>16</b>

*Unsupervised probations that are revoked to Prison are not included in this count, however, they will be counted on the Prison EI Report as a Probation Revocation.*

### Non-Probation Revocations

Revocation Category	Work Release	OWI Continuum	Special Sentence	Parole	Total
New Felony / Aggravated Conviction				7	7
Other New Conviction	5			2	7
New Arrest ICON	1			2	3
Other Violation - No Arrest	53	2		4	59
Other - No Report of Violation Data	3		8	22	33
<b>Total</b>	<b>62</b>	<b>2</b>	<b>8</b>	<b>37</b>	<b>109</b>



## Parole Technical Violations – No Arrest

### Technical Violation Behavior Codes by Hierarchy

Violation of No Contact Order	2
Illegal Activity Without Arrest	7
Physical Abuse	2
Physical Contact Sexual Misconduct	
Possession of a Weapon	
Non-Physical Contact Sexual Misconduct	1
Other Prohibited Contact	
Emotional/Verbal Abuse	9
Escaped from Confinement / Custody	13
Failure to Report / Return / Absconsion	3
Unauthorized Distribution of Alcohol or Drugs	
Use / Possession of Alcohol or Drugs / Paraphernalia	10
Possession of Contraband (non-weapon)	7
Out of Place of Assignment / Unauthorized Location	4
Failure to Submit to Security Standard	
Fired from Employment	
Terminated / Failure to Participate in Treatment	
Violation of Special Conditions - Other	
Failure to Maintain Contact	
None	1
GPS / EMS Violation	
<b>Total</b>	<b>59</b>

*Parole Supervision Status: Any offenders whose parole was revoked and Work Release granted and were not physically received by IMCC OR paroled to a detainer and revoked in a prior fiscal year, but were not physically received by IMCC until the current fiscal year will not be included in the above count.*

## Security Standards – Non-toxin by Type & Sub-type

Non-Toxin Type	Non-Toxin Sub Type	4JD
Offsite	Arrest - New Charge	7
Offsite	Arrest - Violation	53
Offsite	Curfew	1
Offsite	Employment	164
Offsite	Furlough	12
Offsite	Home Placement Investigation	31
Offsite	Home Search	54
Offsite	Home Visit	4,029
Offsite	Home Visit - Attempted	230
Offsite	Other Agency Assist	3
Offsite	Public Location Field Check	168
Offsite	Vehicle	1
Offsite	Visual	9
Offsite	Warrant - Absconder	8
Offsite	Warrant Check - Attempted	2
Offsite	Warrant - New Charge	1
Offsite	Warrant - Violation	42
Onsite	Day Reporting	
Onsite	Vehicle	5
Personal Search	Body Scan	4
Personal Search	Pat	45,287
Personal Search	Strip	363
Room/Cell	K9	
Room/Cell	Officer	637
	<b>Total</b>	<b>51,111</b>

## Fourth Judicial District FY16 Total Expenditures by Line Items

	TOTAL GENERAL FUND (POS)	TOTAL Local/Fed/Other	GRAND TOTAL
<b>EXPENDITURES</b>			
101 Personal Services	5,345,832.12	564,997.34	5,910,829.46
202 Personal In-State Travel	5,683.90	22,735.60	28,419.50
203 Vehicle Operation	2,240.41	18,670.12	20,910.53
205 Personal Out-State Travel	-	-	-
301 Office Supplies	2,998.90	39,193.14	42,192.04
302 Facility Maint. Supplies	-	585.84	585.84
304 Prof. & Scientific Supplies	14,574.49	19,438.93	34,013.42
306 House/Sub. Supplies	9,929.78	20,093.20	30,022.98
308 Other Supplies	330.71	330.72	661.43
311 Food	88,078.58	128,010.51	216,089.09
312 Uniforms	-	-	-
401 Communications	13,300.86	26,962.08	40,262.94
402 Rental	33,201.84	30,845.76	64,047.60
403 Utilities	21,801.41	40,004.13	61,805.54
405 Prof. & Scientific Services	53,235.75	30,000.00	83,235.75
406 Outside Services	3,301.18	23,842.99	27,144.17
407 Intra-State Transfers	-	-	-
408 Advertising & Publicity	-	505.53	505.53
409 Outside Repairs	-	39,549.31	39,549.31
412 Auditor Reimbursement	-	-	-
414 Remb. to Other Agencies	7,667.05	13,252.19	20,919.24
416 ITS Reimbursement (Data Proc)	-	8,496.00	8,496.00
417 Workers Compensation	3,600.00	5,979.00	9,579.00
501 Equipment	-	-	-
502 Office Equipment	-	-	-
503 Non-Inventory Equipment	4,816.10	14,448.30	19,264.40
510 Data Processing	20,437.51	-	20,437.51
601 Claims	-	-	-
602 Other Expenses	6,974.41	9,179.55	16,153.96
604 Securities	-	-	-
803 Aid to Individuals	-	-	-
901 Capitals	-	-	-
<b>TOTAL EXPENDITURES</b>	<b>5,638,005.00</b>	<b>1,057,120.24</b>	<b>6,695,125.24</b>

**Fourth Judicial District  
FY16 Total Expenditures by Cost Center**

Personal Services	\$5,910,829.46
Travel & Subsistence	\$49,330.03
Supplies	\$323,564.80
Contractual Services	\$355,545.08
Equipment & Repairs	\$39,701.91
Claims & Misc.	\$16,153.96
Licenses, Permits, & Refunds	\$0.00
State Aid	\$0.00
Plant Improvement	\$0.00
	<hr/>
<b>Total Expenditures</b>	<b><u><u>\$6,695,125.24</u></u></b>

**Fourth Judicial District  
FY16 Offender Fees Collected**

<u>Residential Rent</u>	
RCF	\$442,639.66
RTC	\$167,559.60
<u>Offender Fees</u>	
OWI Treatment Fees	\$3,255.00
SO Treatment Fees	\$17,789.42
Supervision Fees	\$410,366.80

**Fourth Judicial District  
FY16 Expenditures by Major Cost Center  
(ORGS)**

	ADMINISTRA- TION	PROBATION/ PAROLE	RESIDENTIAL	DRUG COURT	SEX OFFENDER	DOMESTI C VIOL/BEP	COMMUNI TY WORK CREW	INTENSIVE SUPERVIS ION	TOTALS	
<b>EXPENDITURES</b>										
101	Personal Services	620,393.61	1,981,884.56	2,109,159.95	233,331.72	456,623.38	19,953.01	93,565.30	395,917.93	5,910,829.46
202	Personal In-State Travel	7,451.21	13,682.80	890.00	4,298.95	460.60	-	494.55	1,141.39	28,419.50
203	Vehicle Operation	-	8476.94	4,366.72	-	600.00	-	1,335.80	6,131.07	20,910.53
205	Personal Out-State Travel	-	-	-	-	-	-	-	-	-
301	Office Supplies	8,398.88	28,001.18	4,580.59	192.70	781.37	-	21.39	215.93	42,192.04
302	Facility Maint. Supplies	-	558.39	27.45	-	-	-	-	-	585.84
304	Prof. & Scientific Supplies	-	9,459.66	10,930.20	6,614.05	-	-	7,009.51	-	34,013.42
306	House/Sub. Supplies	-	873.01	29,149.97	-	-	-	-	-	30,022.98
308	Other Supplies	-	157.95	317.54	-	-	-	185.94	-	661.43
311	Food	-	-	216,089.09	-	-	-	-	-	216,089.09
312	Uniforms	-	-	-	-	-	-	-	-	-
401	Communications	-	24,814.69	6,424.84	452.91	-	-	245.42	8,325.08	40,262.94
402	Rental	-	53,554.00	485.60	-	-	-	-	10,008.00	64,047.60
403	Utilities	-	12,066.54	48,416.51	-	-	-	1,322.49	-	61,805.54
405	Prof. & Scientific Services	-	2,233.20	25,937.55	30,165.00	7,500.00	17,400.00	-	-	83,235.75
406	Outside Services	350.00	1,365.61	25,105.08	-	-	-	-	323.48	27,144.17
407	Intra-State Transfers	-	-	-	-	-	-	-	-	-
408	Advertising & Publicity	505.53	-	-	-	-	-	-	-	505.53
409	Outside Repairs	-	8,544.65	31,004.66	-	-	-	-	-	39,549.31
412	Auditor Reimbursement	-	-	-	-	-	-	-	-	-
414	Reimb. to Other Agencies	19,000.15	689.74	891.12	76.46	100.72	-	28.30	132.75	20,919.24
416	ITS Remb. (Data Proc)	-	5,306.00	3,190.00	-	-	-	-	-	8,496.00
417	Workers Compensation	968.05	3,150.74	3,356.55	372.47	1,070.42	-	143.72	517.05	9,579.00
501	Equipment	-	-	-	-	-	-	-	-	-
502	Office Equipment	-	-	-	-	-	-	-	-	-
503	Non-Inventory Equipment	-	8,521.67	10,045.35	-	170.99	-	-	526.39	19,264.40
510	Data Processing	4,490.34	15,013.58	805.24	-	-	-	-	128.35	20,437.51
601	Claims	-	-	-	-	-	-	-	-	-
602	Other Expenses	-	3,375.12	12,778.84	-	-	-	-	-	16,153.96
604	Securities	-	-	-	-	-	-	-	-	-
803	Aid to Individuals	-	-	-	-	-	-	-	-	-
901	Capitals	-	-	-	-	-	-	-	-	-
<b>TOTAL EXPENDITURES</b>		<b>661,557.77</b>	<b>2,181,730.03</b>	<b>2,543,952.85</b>	<b>275,504.26</b>	<b>467,307.48</b>	<b>37,353.01</b>	<b>95,834.48</b>	<b>431,885.36</b>	<b>6,695,125.24</b>

**Fourth Judicial District  
FY16 Expenditures by Special Project by Revenue Source**

	DRUG COURT	SEX OFFENDER	DOMESTIC VIOL/BEP	COMMUNITY WORK CREW	INTENSIVE SUPERVISION
General Fund	\$139,952.16	\$465,294.52	\$37,353.01	\$94,873.12	\$401,946.66
Local	\$135,552.10	\$2,012.96		\$961.36	\$29,938.70
<b>TOTALS</b>	<b>\$275,504.26</b>	<b>\$467,307.48</b>	<b>\$37,353.01</b>	<b>\$95,834.48</b>	<b>\$431,885.36</b>

**Fourth Judicial District  
FY16 Total Revenues by Source**

	TOTAL GENERAL FUND (POS)	TOTAL Local/Fed/Other	GRAND TOTAL
REVENUE			
01 Balance Forward	-	53,301.25	53,301.25
05 Appropriation	5,638,005.00	-	5,638,005.00
05 Salary Adjustment	-	-	-
05 De-appropriation	-	-	-
05 Re-Allocation	-	-	-
05 Sex Offender Transfer	-	-	-
05 Workers Compensation	-	-	-
201 Federal Grants	-	36,467.59	36,467.59
202 Local Gov't (County Agreements)	-	102,358.00	102,358.00
204 Intra-State Transfers	-	-	-
205 Federal Pass-Through	-	-	-
301 Interest	-	42.53	42.53
401 Enrollment Fees	-	431,411.22	431,411.22
402 Fees & Licenses	-	610,199.26	610,199.26
501 Miscellaneous Revenue	-	36,570.96	36,570.96
704 Other Revenue	-	-	-
<b>TOTAL REVENUE</b>	<b>5,638,005.00</b>	<b>1,270,350.81</b>	<b>6,908,355.81</b>

FY16 Average Daily Cost Worksheet

4th District

<b>FIELD SERVICES</b>				
	<b>Total Amount</b>			
Grand Total Field Services Expenditures	2181730.03			
	<b>Dollars Allocated</b>	<b>Number of Offenders</b>	<b>Cost per Offender</b>	
Pretrial Interviews %	25329.91	799	31.70201502	
Presentence Investigations %	97699.55	1252	78.03478435	
	<b>Dollars Allocated</b>	<b>Average # Offenders Served</b>	<b>Divided by 365 days</b>	<b>Cost Per Offender</b>
Pretrial Release with Supervision %	73762.72	50	Divided by 365 days	4.041792877
Probation/Parole Supervision %	1801645.85	1242	Divided by 365 days	3.974248009
<b>SPECIALTIES</b> (deducted from probation/parole)	<b>Dollars Allocated</b>	<b>Average # Offenders Served</b>	<b>Divided by 365 days</b>	<b>Cost Per Offender</b>
Probation/Parole Intensive Services %	431885.36	110	Divided by 365 days	10.75679601
Low Risk Probation Expenditure	183292	1220	Divided by 365 days	0.411614642
Minimum Risk Probation Expenditure		0	Divided by 365 days	#DIV/0!
Intensive Supervision - Sex Offenders Expenditure	197079.29	32	Divided by 365 days	16.87322688
Drug Court Expenditure	275504.26	43	Divided by 365 days	17.55363237
<b>INTERVENTION PROGRAMS</b> (not deducted from probation/parole)	<b>Dollars Allocated</b>	<b>Average # Offenders Served</b>	<b>Divided by 365 days</b>	<b>Cost Per Offender</b>
Batterer's Education Program	37353.01	42	Divided by 365 days	2.436595564
Sex Offender Treatment Program	270228.19	101	Divided by 365 days	7.330209955
<b>RESIDENTIAL SERVICES</b>				
	<b>Dollars Allocated</b>	<b>Average # Offenders</b>	<b>Divided by 365 days</b>	<b>Cost Per Offender</b>
Total Residential Expenditures	2539787.24	90.67	Divided by 365 days	76.74336832

## Employee Training Offered in FY16

E-Learning and various other workshops attended during FY16 include:

- A New Spin on Designer Drugs
- Annual Governor's Conference on Substance Abuse
- Bloodborne Pathogens and Universal Precautions
- CJIS Security
- Community Connections Supporting Reentry
- Contraband and Searches
- CPR
- Diversity Cultural Competency
- Ethics for Substance Abuse Counselors
- Evidence Based Practices
- Fire Extinguishers
- Firearms Training
- Glock Armorer's Course
- Handgun Qualification Course
- Here I am, Send Me! (Iowa Narcotics Officers Association)
- IOWA/NCIC Certification
- Iowa Sex Crimes Investigators Conference
- LEIN Conference
- Lock Out Tag Out
- Mental Health Corrections Supervision
- Personal Safety Awareness
- Personal Safety Instructor
- PREA Expectations
- Right to Know
- SOTP Professional Certification Training
- SOTIPS Sex Offender Risk Assessment
- Standard Response Protocol (SRP) Training
- The Habits of Stress-Resilient People
- Use of Force
- Work Rules Code of Conduct
- Workplace Violence

## Prison Rape Elimination Act (PREA) Audit

On July 14-16, 2014, a Prison Rape Elimination Act (PREA) Audit was conducted by a Department of Justice certified auditor at the Residential Correctional Facility and Residential Treatment Center. Both facilities passed the audit and are in compliance with the federal PREA standards. A complete audit report for each facility is located online at: <http://www.fourthdcs.com/audit.html>. The next audits are anticipated in the Spring of 2017.



## Drug Court Grants

The Drug Court Program received a \$90,527 grant from the Governor's Office of Drug Control Policy in January, 2013. The grant funded three (3) years of much needed mental health counseling and programming for drug court clients. Referrals were made to the contract provider, Heartland Family Service, for individual screening, diagnosis and treatment. The mental health counselor attended drug court staffings and communicated with staff about treatment progress/needs. The mental health programming option has received positive feedback from staff and clients and is proving to be a beneficial part of the Drug Court Program.

The Drug Court Program received an additional \$26,589 in grant funding in FY16 which extended the program until September, 2016. This additional funding enabled the program to continue Mental Health counseling. The department also received \$3,000 to purchase drug testing supplies and \$350 to purchase bus passes for drug court clients. The Governor's Office also provided additional funds for employees to attend the National Drug Court Conference in June, 2016.

In addition, the District received a one-time grant from the Iowa West Foundation for \$97,858, which allowed the Drug Court Program to continue operating. The majority of the grant went toward unfunded salary expenses.

## Income Offset Program

Section 8A.504 of the Code of Iowa provides for the offset of payments made by the State to satisfy liabilities owed to government agencies. The Department began participating in the Income Offset Program in FY11 to collect outstanding liabilities from offenders.

### Income Offset by Fiscal Year:

- FY2011 – \$8,352.85
- FY2012 – \$15,344.69
- FY2013 – \$11,338.54
- FY2014 - \$11,778.98
- FY2015 - \$10,231.55
- FY2016 - \$6,818.03

## FY 16 Employee Information

Average Number of Employees	64
Authorized Number of Employees	65

New Hires	2
➤ Amy Haase, Secretary	
➤ Samantha Myers, Residential Officer	
Resignations	2
➤ Brittney Christensen, Residential Officer	
➤ Jon Recher, Residential Officer	
Retirements	4
➤ David Holst, Probation/Parole Officer II	
➤ Jerry Mann, Residential Officer	
➤ Jackie Myers, Staff Psychologist	
➤ Mark Neseth, Probation/Parole Officer III	

### [Website](#)

Additional information may be found online at [www.fourthdcs.com](http://www.fourthdcs.com)

FOURTH JUDICIAL DISTRICT  
DEPARTMENT OF CORRECTIONAL SERVICES



Back Row L to R: Dan Moores, Kip Shanks, Mike Flairty, Bob McAleer, Dan Newby, Bill Pappas, Kevin Coughlin, Brian Richmond, Jim Weberg, Chris Coughlin and John Auffart

Middle Row L to R: LaDonn Grieser, Wayne Reed, Stacey Beaman, Matt Whitney, Tyson Howard, Todd Millikan, Dana Bruce, Denise Newberg, Jen Foltz, Harry Bryson and Rich Alcala

Seated L to R: Nikki Verschoor, Amy Haase, Kelly Jennings, Anne Robbins, Angie Larsen, Sarah Walker, Christy Fyfe, Colleen Bryant, Samantha Myers and Veronica LeGuillou