



IOWA BOARD OF CORRECTIONS MINUTES Friday, November 5, 2021

Due to the continuing COVID-19 pandemic, this meeting will be conducted via Zoom. Connection information has been provided as part of the meeting agenda and the meeting will be simultaneously live-streamed on the DOC YouTube channel.

Board Members Present: Chair Rebecca Williams, Larry Kudej, Trent Keller, Dr. Lisa Hill and Jim Kersten.

Staff Present: Dr. Beth Skinner, Randy Gibbs, Sally Kreamer, Brain Foster, Dr. Jerome Greenfield, Sarah Fineran, Steve Dick, Nick Crawford, Michelle Dix, Sheryl Dahm, Lorie Woodard, Danielle Bailey, Danielle McWilliams

Visitors Present:

Call to Order, Vice Chair Rebecca Williams

- Chair Rebecca Williams called the meeting to order.
- Chair Williams asked for a motion to approve the September 10, 2021 meeting minutes. Larry Kudej made a motion and Trent Keller seconded the motion. All present members were in favor of approving the minutes, **motion passed**.
- The next scheduled Board of Corrections meeting is November 5, 2021, at the Department of Corrections Central Office, Des Moines, Iowa. The meeting will begin at 9:00 a.m.
- (A meeting notice will be posted on the DOC website: <https://doc.iowa.gov/>)

Welcome - Dr. Beth Skinner, Director

- There have been some increases in COVID across the state in ICIW, CCF and MPCF. There are currently 66 positive IIs and 46 staff. There are two IIs currently at UIHC.
- 76% of IIs are vaccinated and 56% of staff. 400 doses of booster vaccinations were recently provided.
- Capacity continues to increase.
- There was a call yesterday with the Board of Parole regarding the new treatment pilot project, releases and strategies to manage populations.
- The first two rounds of prison feedback forums have been completed. As these forums continue, more staff are coming with solutions. Information from these will be shared with prison administration to prioritize and develop plans to address concerns.
- Sarah Fineran and the Research Team are working with SAS to develop a job classification dashboard. Staff would be able to utilize this when classifying inmates to jobs based on risk. This is intended to increase and enhance security at all facilities.
- Director Skinner introduced Grace Hall and Greg Hill with the Council of State Governments (CSG) Justice Center. The current Iowa project they are working on is the justice reinvestment initiative. This has grown to focus on state criminal justice challenges. They work with states to collect and analyze data. They are interested in focusing on Iowa's criminal justice response during the pandemic. They have been able to reach out to Districts regarding their initiatives towards reducing revocations and utilizing remote services. Committees will work on this project until August 2022 when the final report will be released.

The mission of the Iowa Department of Corrections is:
Creating Opportunities for Safer Communities

Mr. Kudej asked about the completion date and if recommendations can then be a focus during the 2023 legislative session if they are not administrative. This is correct. Mr. Keller if there are any considerations given to race relations in the Waterloo area, and if there is anything that the Board can do to try to increase race relationships and improve morale for DOC staff and local law enforcement. Mr. Hill stated that there will be some focus on diversity. While there is no guarantee this will be shared with local law enforcement, there will be supporting information for the DOC. Someone from the CSG will reach out to Mr. Keller with additional information regarding similar projects. There will be more information available as this project evolves.

- The CGL external review of our statewide program is in the final process. The draft is anticipated next week and the initial timeline has the final report due December 1st.
- Recruitment and retention continue to be a driving force for the DOC. One goal is to add a Human Resources Professional to assist with hiring initiatives. Retention is also important in order to fill our vacant positions. The DOC is reviewing ways to streamline the hiring process through LEIN events. Postings for correctional officers and registered nurses on the DAS website are ongoing and do not close so that there is a continual pool of candidates. The DOC is also working to ensure there is professional, consistent training that will make new hires successful as well as developing more expansive mentoring, support and training programs.
- Mr. Kudej asked if recruitment of nurses continues to be an issue. Dr. Greenfield reported this is a global issue. The DOC is currently offering a sign-on bonus for nurses, but hospitals are offering a higher bonus and alternative scheduling that the DOC cannot offer. The DOC has regular meetings to discuss options. Mr. Kudej asked about overtime for nurses. There is currently an exception in place allowing time and a half for overtime for nursing staff, but there is no guarantee it will continue. There are 14 different temp agencies the DOC works with.
- Mr. Kudej asked if the staff who are leaving are newer or older retiring staff. It is a mixture of both. Hiring is a competitive field at this time and the DOC is constantly looking for ways to keep up with other employers.
- Mr. Keller asked if there are more men or women applying for positions or if either group is targeted more than the other. The DOC is constantly looking to ensure there is a diverse work population. While there are women that apply for correctional officer positions, there tend to be more men. Mr. Keller asked what type of education is required to be a correctional officer. A high school education is the requirement.
- Chair Williams asked how the pandemic and ASP incident have impacted filling of positions. The pandemic accelerated staff separating from employment with the DOC. Working in a congregate setting where a virus can spread quickly is a concern for many people. There was also an impact from the murders at ASP, stressing the conditions in which our employees work. With staff leaving, the remaining staff have seen an increase in overtime. Staff are getting burned out and may not get the time off they request.
- Dr. Hill stated this sounds like social emotional learning.
- Thank you all for your support over the past couple of years.

Trauma Informed Care - Lorie Woodard, ICIW Deputy Warden and Danielle Bailey, Fifth Judicial District Residential Supervisor

- Today there are 632 women at ICIW. Any woman you interact with at ICIW has a history of trauma, at times inflicted by someone they have had any type of relationship with. Being sentenced to and in prison are traumatic in themselves, which can also trigger past traumas. It is important to review what practices can be modified without sacrificing security. This may be as simple as offering the women choices when possible.
- A list of 10 Gender Responsive Trauma Informed practices were shared with the Board members. Many applicants for positions at the prison have no corrections or social services background and can benefit from these basic guidelines on language and approach to working with the population.

- Being trauma informed is not a personality trait or being nice or saying yes to every request. It is how we approach those things. The training officer at ICIW incorporates this into every aspect of training.
- Mr. Kudej liked the concept of offering choices. It is an easy option to offer and has powerful impacts. Warden Dahm stated that even asking if there is an item that they would like to grab before a room search gives the women a small sense of control knowing what is going to happen and having some input. This can be impactful to even those with no trauma.
- Warden Dahm acknowledged that Director Skinner has been good about allowing ICIW to modify policies intended for men to be rewritten to ICIW.
- Dr. Hill asked if the professional development continues with existing staff as well as being provided to new hires. There are a couple of different trainings that are offered to staff at ICIW.
- Chair Williams asked if adverse childhood experiences are taken into account with trauma informed care and if trauma informed care is one size fits all or tailored to each situation. Literature encourages a universal practice. ICIW also works to tailor based on individual needs. Information on adverse childhood experiences is often collected in the Districts or intake and available to staff. This is standard at both the men's and women's prisons.
- Mr. Keller appreciates this effort. Sometimes it is easy to be irrational at work without intending to be based on our day. It is important that we be both stern and rational at the same time. Every client is different and everybody has different attitudes.
- Danielle Bailey and Danielle McWilliams from the Sixth Judicial District spoke on trauma informed care at the Anchor Center for Women. They follow a Seamless Supervision model of Trauma informed practice which ensures the same supervisor throughout their supervision with the District.
- There are many pathways to crime. The pathway for women is not the same as men and recent studies are beginning to acknowledge this issue. There are usually numerous events in their lives that lead to their crimes.
- Trauma is not necessarily what happens to someone. It is the body's response to what is happening. It could be a single event, or a series of events over a long term. It can be all life experiences impacting the now.
- Collaboration and choice are also important and impactful in the District security and management practices. It is also important to develop relationships in and outside of the services. The better the rapport, the more successful the services.
- Being trauma responsive matters because it enhances safety and security, promotes public safety and helps reduce recidivism. It will help people become more regulated and aware.
- Mr. Kudej asked how long this has been going on. Originally the ANCHOR Center was a mental health facility that was repurposed to a women's center in 2018. Mr. Kudej asked if this program would be reflected in the recidivism numbers. There was a grant implemented on trauma informed cases so that training started in 2020 and was delayed by the pandemic. There are currently three trainers at the facility with the intention of expanding the program in the next year. There will be a three year period after full implementation for impacts to recidivism. Deputy Director Kreamer stated that there has been a decrease in escapes from facilities utilizing trauma informed care. Results are showing clients who seek assistance when they begin to recognize the change in their emotions that could lead to escape. There is a vast difference in the way explosive situations are addressed. Studies do show that implementing programs similar to these often see a reduction in recidivism, but there are also clear impacts in every day operations. Dr. Greenfield applauds these programs because they can be difficult to implement.
- Warden Dahm stated that it is important for staff to understand they must implement this practice, not just the clients.

Aging Prison Population - Dr. Jerome Greenfield, Health Services Administrator

- Mr. Kudej asked questions about dementia and the aging population. Dr. Greenfield stated

that we tend to joke and self-deprecate about our own aging persons. This may be because the thought of growing older is scary.

- DOC pharmacy costs have seen a 10% increase in recent years including chemotherapy, biological and blood products. There are also emotional costs.
- Dr. Greenfield identified numerous health issues seen in the prison system including organic mental syndrome which can even develop secondary to other health issues.
- Symptoms of dementia include a loss of orientation, memory, intellectual function and judgement. There are impaired social and occupational functions. Patients may know who they are, but there is memory loss, perceptions and reasoning uses, and personality changes.
- There is no test for dementia aside from a brain biopsy. 65% of cases are a type of Alzheimer's. Many types of dementia are long acting, while some are multi-infarct that occur in rapid onset.
- Approximately 60% of nursing residents will have some type of dementia.
- Within the prisons, if there is suspicion that someone is demented, there are a series of tests that are conducted to identify any other health issues that could appear as dementia that can be reversible.
- The DOC has a board certified neurologist who is able to conduct brain scans. Many times there will be notable brain shrinkage in dementia patients.
- People with dementia tend to downplay symptoms which people with depression will accentuate memory loss.
- Once dementia has been identified, there are several different treatment options including medication, treatment of underlying medical and psychological issues, alternative treatments and counseling. Medications often come in patch form and can be placed on the patient's back so it cannot be easily removed.
- The DOC does not have a specialized dementia unit, but the medical units within the prisons have many of the characteristics of dementia units in the community because of the consistency and approach in use. There are also incarcerated individuals who are trained as ADL workers to assist this population.
- The aging population in the prison system is escalating. There are currently 31 diagnosed dementia patients in the prison system. Thank you to Mr. Kudej for getting Dr. Greenfield in contact with IDPH on a new grant program for the treatment of dementia in Iowa.
- Dr. Greenfield has been working with the Learning Center to improve mental health training programs for DOC staff.
- Medical units within the prison system are continually reviewed for capacity and services.
- Mr. Kudej asked if the dementia patients are treated at the facilities or taken to IMCC. This varies based on their status. Cases of concerns are reviewed during regular weekly meetings. There is also a letter system for identifying the needed level of care for medical cases. Medical units are currently very full, which is why the medical bed space is continually reviewed.
- Mr. Kudej asked if there are issues with the dementia patients being victimized by the rest of the population. There is continual review for placement for these individuals to best ensure there is a safe placement in the medical units.

Budget Update - Steve Dick, Fiscal Manager

- The DOC is balancing vacancies and overtime costs, while working to fill vacant positions to help decrease the need for overtime.
- Now that we are coming out of the pandemic, there has been an increase in movement around the state which has increased travel costs.
- There are items that are more expensive or are no longer available.
- The advertising budget has seen an increase tied to recruitment efforts.
- There has been a purchase of several body scanners at \$143K each for specific sites. This will assist with reopening the IPI program at ASP.

- Overall the budget is in a pretty good spot. There was a \$10M fund that the Central Office was responsible for allocating as needed. A portion has been retained in the event of unplanned need. There were also additional positions identified as needed funded through this allocation. Some of this fund has been retained pending the CGL report findings that may result in unexpected expenses.
- Some funds were received for CARES funding.
- The CCF Kitchen was approved during the last legislative session and the project has started.
- Mr. Kudej asked about the intrastate transfers line, which is the \$10M for the Central Office to allocate.
- Mr. Kudej asked what securities is, which appears to be a statewide purchase that was allocated to the prisons and institutions. Mr. Dick will review this expenditure to ensure it is correctly coded.
- Mr. Kudej asked about funds received for the Homes for Iowa program. It is expected those funds will go to the non-profit Homes for Iowa program and not through the DOC.
- Chair Williams asked about the switch upgrades going on at ASP. These are actually a computer switch that enhances how computers communicate.
- The DOC continues to communicate with the Governor on budget requests that were approved by the Board of Corrections during the September meeting. There are still ARPA funds pending allocation from the Governor's office. The DOC has submitted numerous projects for these funds, which have also been included in the RIIF requests.

2022 Board Meeting Schedule

- Dr. Hill made a motion to approve the proposed schedule. Mr. Kudej seconded. Board approved the schedule for 2022.

Public Comments - Public

- None.

Open Discussion - Board Members

- Mr. Kudej spoke with Mr. LaMere earlier this week. He has given up working with horses and sends his hellos.
- Mr. Kudej had visited with Mr. Chuck Larson and his wife the previous evening. Mr. Larson was a prior Board of Corrections and Board of Parole member.

Adjournment - Board Members

- A motion to adjourn the meeting was made by Mr. Trent Keller, which was seconded by Mr. Kudej. The meeting was unanimously concluded.

Respectfully Submitted,

Johana Herdrich, Executive Assistant



IOWA PRISON POPULATION FORECAST

The Correctional Policy Project
FY 2021 - FY 2031

Iowa Department of Human Rights, Division of Criminal & Juvenile Justice Planning (CJJP)



SHORT TERM (by FY 2022):

increase by 4.0%



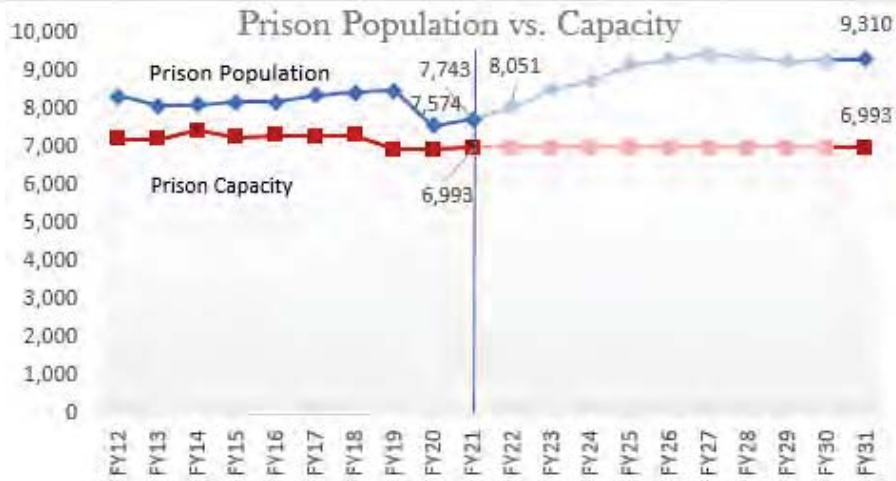
LONG TERM (by FY 2031):

increase by 20.2%



The forecast projects an increase of **37.5%** & **109.4%** by FY 2031
New Admissions Returns

Over the last fiscal year, **the prison population increased by 169 inmates**, but continues to be lower than 2019. Prisons are at **10.7% overcapacity**.

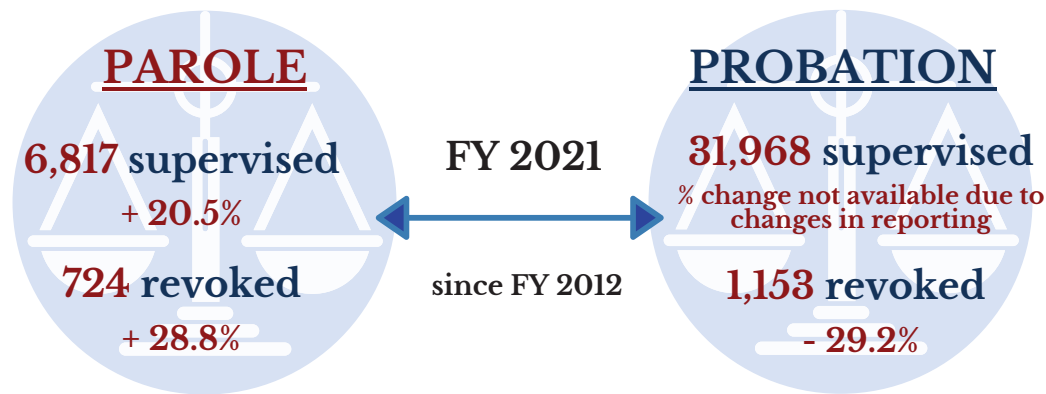


Managing COVID-19 & Impact in 2021:

In May 2021, IDOC launched a Release Candidate **dashboard** to **identify individuals appropriate for release**.

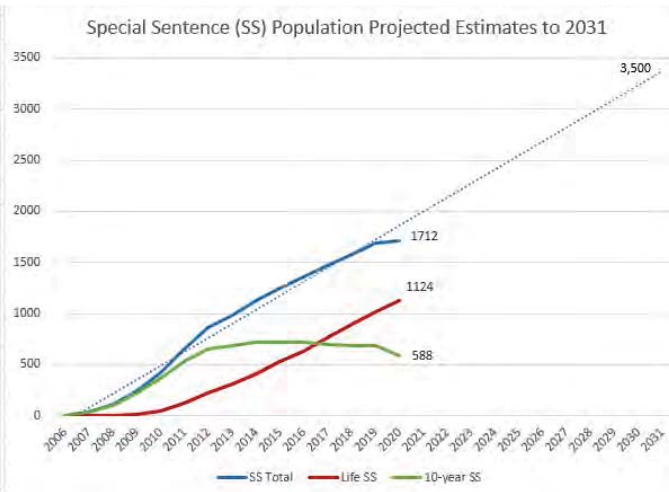
IDOC implemented **technology** to quickly track virus test results and vaccinations for incarcerated individuals. By September 2021, IDOC **vaccinated 6,340 individuals, (70%)**.

The BOP accelerated the volume of cases to be reviewed for release. From April 2020-June 2021, the **BOP reviewed 15,504 cases, (56% were released)**.



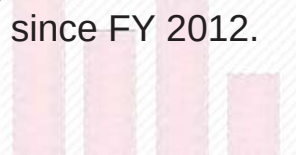
THE SPECIAL SENTENCE*

Since FY 2012, the number of individuals on special sentence supervision increased by **163.2%**, and the revocation rate increased by **46.9%**. By **2031**, an estimated **3,500** individuals will be serving special sentences.



New admit average length of stay **increased 19.0%**, compared to return populations, which **decreased 1.4%**.

Blacks comprised **25.4%** of incarcerated individuals in FY 2021, a **decrease of 0.8%** since FY 2012.



Prison admissions for violent and non-violent offenses **decreased 15.5% and 45.6%, respectively**, over the past ten fiscal years.

OPPORTUNITIES FOR CHANGE

Effective programming to prevent admissions and returns

- ✓ Increase community-based corrections and alternatives to incarceration
- ✓ Improve access to quality mental-health services in prisons and the community
- ✓ Study the impact of mandatory-minimum sentences on the disproportionality of Blacks in the prison population

Review COVID-19 policies and practices

- ✓ Determine how COVID-19 changes influenced admissions and releases and review how these policies and practices could lead to fewer admissions in the future

Other subjects for future research

- ✓ Examine the effectiveness of special sentences*
- ✓ Expand CJJP and IDOC partnership to include predictive analytics for prison releases, with the goal of reducing recidivism

**Individuals convicted of A, B, and C felony sex offenses receive life-time community supervision; D felony and misdemeanor offenses receive 10-year supervision (Iowa Code, §903B)*

A complete copy of the forecast can be found at: <https://humanrights.iowa.gov/criminal-juvenile-justice-planning/publications>

SUPPLEMENTARY INFORMATION: Revocations

Average Length of Time on Supervision prior to Revocation (in Months) for Revoked Probationers and Non-Probationers through June 30, 2021

	N	Average Length of Time on Supervision before Revocation (in Months)
Probation		
Probation Total	1,153	20.5
Non-Probation		
Parole	724	14.4
Work Release	407	5.6
OWI Continuum	12	8.4
Special Sentence	119	17.7
Non-Probation Total	1,262	11.8

Source: Justice Data Warehouse

Race of Revoked Probationers and Non-Probationers through June 30, 2021

	White	Black	Hispanic	Native	API	Total
Probation						
Total	817	226	61	32	17	1,153
%	70.9%	19.6%	5.3%	2.8%	1.5%	100.0%
Non-Probation						
Parole						
N	519	145	32	22	6	724
%	71.7%	20.0%	4.4%	3.0%	0.8%	100.0%
Work Release						
N	256	107	23	18	3	407
%	62.9%	26.3%	5.7%	4.4%	0.7%	100.0%
OWI Continuum						
N	5	5	1	1	0	12
%	41.7%	41.7%	8.3%	8.3%	0.0%	100.0%
Special Sentence						
N	92	14	9	2	2	119
%	77.3%	11.8%	7.6%	1.7%	1.7%	100.0%
Total	872	271	65	43	11	1,262
%	69.1%	21.5%	5.2%	3.4%	0.9%	100.0%

Source: Justice Data Warehouse

SUPPLEMENTARY INFORMATION: Current Active at End Prison Population

On June 30, 2021, there were 7,743 prison inmates. (Source: Justice Data Warehouse)

On November 30, 2021, there were 7,967 prison inmates. (Source: Justice Data Warehouse)

SUPPLEMENTARY INFORMATION: Revocation Reason

Reason for Revocation among Probationers and Non-Probationers through June 30, 2021, by Race

	White		Black		Hispanic		Native		API		Total	
	N	%	N	%	N	%	N	%	N	%	N	%
Probation												
New Conviction	331	69.7%	96	20.2%	32	6.7%	10	2.1%	6	1.3%	475	
New Arrest	350	70.7%	102	20.6%	19	3.8%	13	2.6%	11	2.2%	495	
Other Violation	136	74.3%	28	15.3%	10	5.5%	9	4.9%	0	0.0%	183	
Non-Probation												
Parole												
New Conviction	316	72.8%	90	20.7%	15	3.5%	11	2.5%	2	0.5%	434	
New Arrest	94	64.4%	33	22.6%	9	6.2%	7	4.8%	3	2.1%	146	
Other Violation	109	75.7%	22	15.3%	8	5.6%	4	2.8%	1	0.7%	144	
Work Release												
New Conviction	168	62.7%	73	27.2%	12	4.5%	12	4.5%	3	1.1%	268	
New Arrest	22	66.7%	8	24.2%	1	3.0%	2	6.1%	0	0.0%	33	
Other Violation	66	62.3%	26	24.5%	10	9.4%	4	3.8%	0	0.0%	106	
OWI Continuum												
New Conviction	2	25.0%	4	50.0%	1	12.5%	1	12.5%	0	0.0%	8	
New Arrest	0	0.0%	1	100.0%	0	0.0%	0	0.0%	0	0.0%	1	
Other Violation	3	100.0%	0	0.0%	0	0.0%	0	0.0%	0	0.0%	3	
Special Sentence												
New Conviction	46	76.7%	8	13.3%	4	6.7%	1	1.7%	1	1.7%	60	
New Arrest	15	78.9%	2	10.5%	2	10.5%	0	0.0%	0	0.0%	19	
Other Violation	31	77.5%	4	10.0%	3	7.5%	1	2.5%	1	2.5%	40	
Total												
New Conviction	532	69.1%	175	22.7%	32	4.2%	25	3.2%	6	0.8%	770	
New Arrest	131	65.8%	44	22.1%	12	6.0%	9	4.5%	3	1.5%	199	
Other Violation	209	71.3%	52	17.7%	21	7.2%	9	3.1%	2	0.7%	293	

Source: Justice Data Warehouse

PARCEL NO. 2022-04
PROJECT NO. L-C-927--73-53

COUNTY JONES
ROAD NAME BUFFALO ROAD

SELLER STATE OF IOWA ACTING THROUGH THE IOWA DEPARTMENT OF CORRECTIONS

This Agreement made and entered into this _____ day of _____, 20__ by and between Seller and the Jones County Secondary Roads Department, acting for the County of Jones, Buyer.

1. Seller agrees to sell and furnish to Buyer a conveyance document, on forms furnished by Buyer, and Buyer agrees to buy the following real estate, hereinafter referred to as the premises, situated in parts of the following:

Parcel 2022-04 – Part of Lot 1 of the Northeast Quarter (NE1/4) of the Southwest Quarter (SW1/4) in Section Three (3), Township Eighty-four North (T84N), Range Four West (R4W) of the Fifth Principal Meridian.

County of Jones, State of Iowa, and which include the following buildings, improvements and other property:

NONE

2. Buyer agrees to reconstruct a Type “C” entrance at Sta. 45+00, right side and said entrance shall be thirty (30) feet wide and entrance at Sta. 49+50, right side and said entrance shall be twenty-four (24) feet wide, see plan sheet D.1 & D.2
3. Seller also grants to Buyer three temporary easements as follows:
NONE
4. Seller consents to any change of grade of the highway and accepts payment under this contract for any and all damages arising therefrom. Seller acknowledges full settlement and payment from the Buyer for all claims per the terms of this contract and discharges the Buyer from liability because of this contract and the construction of this public improvement project.
5. Possession of the premises is the essence of this contract and Buyer may enter and assume full use and enjoyment of the premises per the terms of this contract. Seller grants Buyer the immediate right to enter the premises for the purpose of removing trees due to the potential of these trees being inhabited by State and Federal listed threatened/endangered bat species.
6. Seller agrees to grant the right of possession and to surrender physical possession of the premises upon receipt of payment from Buyer or the date listed below:

<u>PAYMENT AMOUNT</u>	<u>AGREED PERFORMANCE</u>	<u>DATE OF PERFORMANCE</u>
\$ <u>1,522.50</u>	on right of possession	<u>Upon Buyer approval</u>
\$ <u>0.00</u>	on temporary easement	<u>Upon Buyer approval</u>
\$ <u>0.00</u>	abstracting fee	_____
\$ <u>0.00</u>	damages	_____
\$ <u>1,522.50</u>	TOTAL LUMP SUM	_____

BREAKDOWN

Parcel 2022-04 0.58 acres @ \$ 2,625.00 per acre = \$ 1,522.50

It is understood and agreed the final conveyance document will show the area of the premises to be conveyed as determined by a Land Surveyor’s Plat. Should the Land Surveyor’s Plat indicate a slightly greater area to be conveyed than that shown above, then Buyer will adjust the Total Lump Sum of this agreement to pay for the additional area.

7. SELLER WARRANTS that there are no tenants on the premises holding under the lease except:
NONE
8. Each page and each attachment is by this reference made part hereof and the entire agreement consists of two (2) pages.
9. This contract shall apply to and bind the legal successors in interest of the Seller and Seller agrees to pay all liens and assessments against the premises, including all taxes and special assessments payable until surrender of possession as required by Section 427.2 of the Code of Iowa, and agree to warrant good and sufficient title.

title to the Buyer. Seller also agrees to obtain court approval of this contract, if requested by the buyer, in the event title to the premises becomes an asset of any estate, trust, conservatorship or guardianship. Buyer agrees to pay court approval costs and all other costs necessary to transfer the premises to the Buyer, but not attorney fees. Claims for such transfer costs shall be paid in amounts supported by paid receipts or signed bills.

- 11. If Seller holds title to the premises in joint tenancy with full rights of survivorship and not as tenants in common at the time of this contract, Buyer will pay any remaining proceeds to the survivor of that joint tenancy and will accept title solely from that survivor, provided the joint tenancy has not been destroyed by operation of law or acts of the Seller.
- 12. These premises are being acquired for public purposes and this transfer is exempt from the requirements for the filing of a Declaration of Value by Section 428A.1 of the Code of Iowa.
- 13. Buyer hereby gives notice of Seller's five-year right to re-negotiate construction or maintenance damages not apparent at the time of the signing of this contract as required by Chapter 6B.52 of the Code of Iowa.
- 14. This Written contract constitutes the entire agreement between Buyer and Seller and there is no agreement to do or not to do any act or deed except as specifically provided for herein.
- 15. Seller states and warrants that, to the best of Seller's knowledge, there is no burial site, well, solid waste disposal site, hazardous substance, nor underground storage tank on the premises described and sought herein.

Additional Right of Way Agreements:

SELLER'S SIGNATURE AND CLAIMANT'S CERTIFICATION: Upon due approval and execution by the Buyer, we the undersigned claimants certify the total lump sum payment shown herein is just and unpaid.

X _____

 (Mailing Address)

X _____

SELLER'S ACKNOWLEDGMENT

STATE OF _____
COUNTY OF _____

On this _____ day of _____, 20____,
before me, the undersigned, personally appeared

to me personally known or proved to me on the basis of satisfactory evidence to be the person(s) whose name(s) is/are subscribed to the within instrument and acknowledged to me that he/she/they executed the same in his/her/their authorized capacity(ies), and that by his/her/their signature(s) on the instrument the person(s), or the entity upon behalf of which the person(s) acted, executed the instrument.

_____(Sign in Ink)

_____(Print/Type Name)

Notary Public in and for the State of _____
My Commission expires _____

BUYER'S ACKNOWLEDGMENT

Recommended by: Engineer _____ (Date)

Approved by: Board of Supervisors, Chairman (Date)

LEGAL DESCRIPTION

PARCEL 2022-04 – Part of Lot 1 of the Northeast Quarter (NE1/4) of the Southwest Quarter (SW1/4) in Section Three (3), Township Eighty-four North (T84N), Range Four West (R4W) of the Fifth Principal Meridian, Jones County, Iowa as recorded in the Office of Jones County Recorder in Plat Book C, Page 100; containing a total of 0.58 acres more or less, **subject to easements, reservations, restrictions, and rights of way of record and not of record and more particularly described by metes and bounds as follows:**

COMMENCING at the Northwest corner of the Northeast Quarter (NE1/4) of the Southwest Quarter (SW1/4) of Section Three (3), Township Eighty-four North (T84N), Range Four West (R4W) of the Fifth Principal Meridian, Jones County, Iowa;

Thence South 01°-04'-11" East 272.41 feet along the West line of said Northeast Quarter (NE1/4) of the Southwest Quarter (SW1/4) of Section Three (3) to the **POINT OF BEGINNING**, said point also being on the existing South right of way line of Buffalo Road;

Thence along the existing South right of way line of said Buffalo Road and along a circular curve concave Northeasterly for an arc length of 139.17 feet, said circular curve having a delta angle of 09°31'07", a radius of 837.69 feet, having a chord distance of 139.01 feet and a bearing of South 73°44'25" East;

Thence continuing along the existing South right of way line of said Buffalo Road South 78°-21'-50" East 509.26 feet to a point of curvature;

Thence continuing along the existing South right of way line of said Buffalo Road and along a circular curve concave Northeasterly for an arc length of 73.76 feet, said circular curve having a delta angle of 02°52'57", a radius of 1466.09 feet, having a chord distance of 73.75 feet and a bearing of South 79°50'41" East;

Thence continuing along the existing South right of way line of said Buffalo Road South 81°-17'-45" East 2.98;

Thence North 84°-06'-53" West 250.53;

Thence North 80°-23'-09" West 125.00;


Thence South 77°-48'-46" West 80.78;

Thence North 81°-11'-11" West 158.25;

Thence North 58°-54'-48" West 115.84 to the West line of said Northeast Quarter (NE1/4) of the Southwest Quarter (SW1/4) of Section Three (3);

Thence North 01°-04'-11" West 41.52 feet along the said West line of said Northeast Quarter (NE1/4) of the Southwest Quarter (SW1/4) of Section Three (3) to the **POINT OF BEGINNING**; containing a total of 0.58 acres more or less, **subject to easements, reservations, restrictions, and rights of way of record and not of record**;

The East line of the Northwest Quarter (NW1/4) of the Southwest Quarter (SW1/4) in Section Three (3), Township Eighty-four North (T84N), Range Four West (R4W) of the Fifth Principal Meridian, Jones County, Iowa is assumed to bear South 01°-04'-11" East.

	SURVEYORS CERTIFICATE	
	I hereby certify that this land survey document was prepared and related survey work was performed by me or under my direct personal supervision, and that I am a duly Licensed Land Surveyor under the laws of the State of Iowa;	
My license renewal date is December 31, 2022.		
William H. Burger Sheet No. _____	Date _____	Reg. No. 12642
covered by this seal		

ACQUISITION PLAT

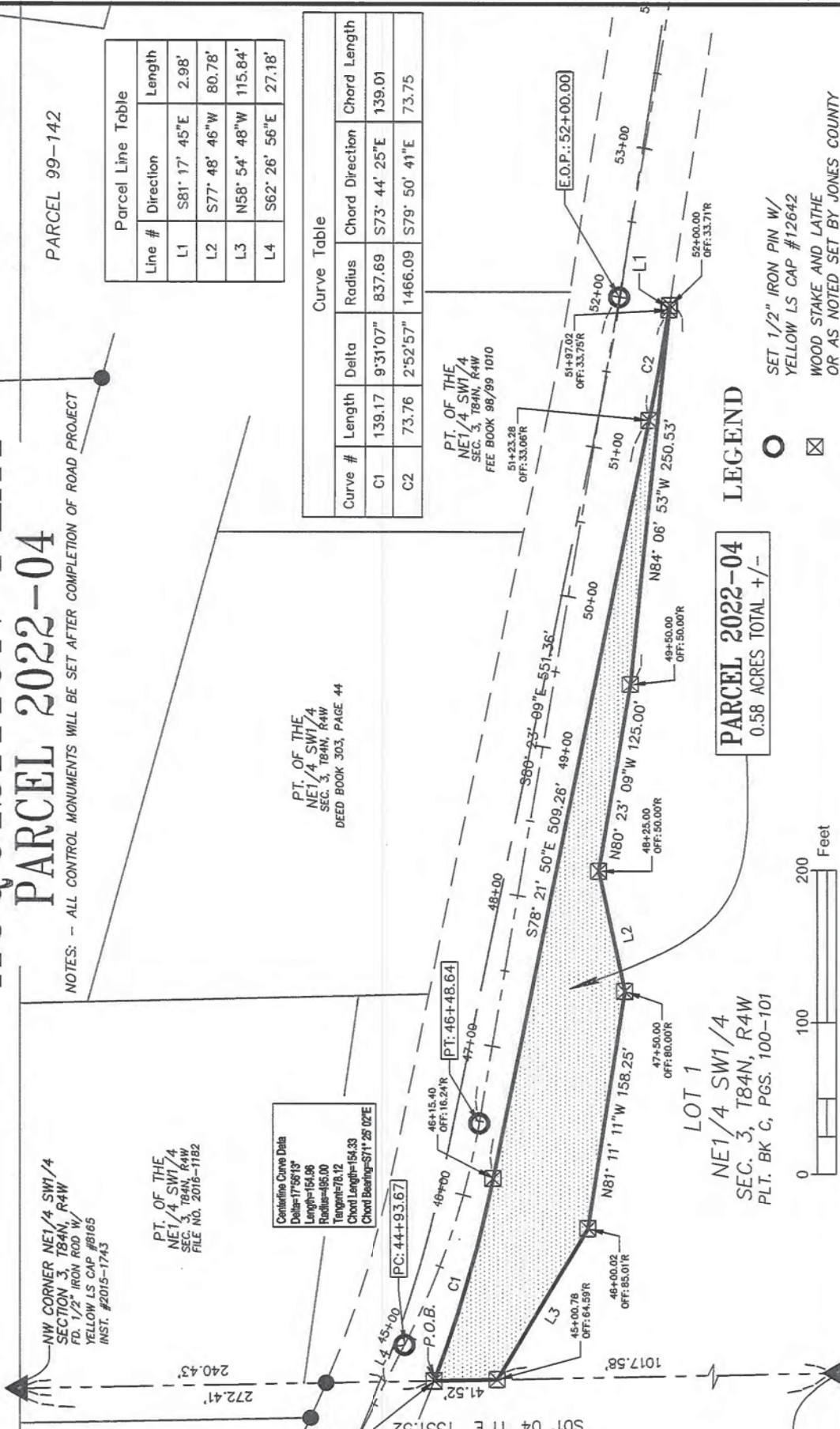
PARCEL 2022-04

NOTES: - ALL CONTROL MONUMENTS WILL BE SET AFTER COMPLETION OF ROAD PROJECT

PARCEL 99-142

Line #	Direction	Length
L1	S81° 17' 45"E	2.98'
L2	S77° 48' 46"W	80.78'
L3	N58° 54' 48"W	115.84'
L4	S62° 26' 56"E	27.18'

Curve #	Length	Delta	Radius	Chord Direction	Chord Length
C1	139.17	9°31'07"	837.69	S73° 44' 25"E	139.01
C2	73.76	2°52'57"	1466.09	S79° 50' 41"E	73.75



LEGEND

- SET 1/2" IRON PIN W/ YELLOW LS CAP #12642
- ⊠ WOOD STAKE AND LATHE OR AS NOTED SET BY JONES COUNTY
- FD, 1/2" IRON PIN W/ YELLOW LS CAP #8165
- ▲ UNITED STATES PUBLIC LAND CORNER DESCRIPTION AS NOTED
- ⬇ ANGLE POINT (NOTHING FD. OR SET)
- ▬ PARCEL BOUNDARY LINES SURVEYED
- ▬ EXISTING RIGHT OF WAY LINE
- ▬ EXISTING CENTERLINE BUFFALO ROAD
- ▬ PROPOSED CENTERLINE BUFFALO ROAD
- ▬ SECTION LINE, 1/4 LINE OR 1/4 1/4 LINE
- ▬ EXISTING LOT LINE, PARCEL LINE OR DEED LINE
- () PREVIOUSLY RECORDED POINT OF BEGINNING

PARCEL 2022-04
0.58 ACRES TOTAL +/-

SHEET 2

SCALE: 1" = 100'

DATE OF SURVEY: 4/25/2018, 11/26/2018, 11/18/2020

PROJECT NO. C-927

PROPRIETORS: STATE OF IOWA REFORMATORY FARM #1

I HEREBY CERTIFY THAT THIS LANDSURVEYING DOCUMENT WAS PREPARED AND RELATED SURVEY WORK WAS PERFORMED BY ME OR UNDER MY DIRECT PERSONAL SUPERVISION AND THAT I AM A DULY LICENSED LAND SURVEYOR UNDER THE LAWS OF THE STATE OF IOWA. MY LICENSE RENEWAL DATE IS DECEMBER 31, 2022

WILLIAM H. BURGER #12642

DATE

Wm. Burger
LandSurveyor
510 3rd Street West Court
Worthington, Iowa 52078



BY THIS SEAL 1

Preparer: Derek G. Snead, Jones County Engineer, 19501 Hwy 64, P.O. Box 368, Anamosa, Iowa 52205, (319) 462-3785

JONES COUNTY SECONDARY ROAD DEPARTMENT

EASEMENT FOR PUBLIC HIGHWAY

For the consideration of one thousand five hundred and twenty-two dollars and fifty cents---(\$ 1,522.50)---Dollars and other valuable consideration in hand paid by Jones County, to State of Iowa, acting through the Department of Corrections, hereby grant to Jones County, a permanent easement for road purposes and for use as a Public Highway in, to, on, over, and across real estate in Jones County, Iowa:

THE EASEMENT GRANTED FOR HIGHWAY PURPOSES IS TO LAND DESCRIBED AS FOLLOWS:

A part of Lot 1 of the Northeast Quarter (NE1/4) of the Southwest Quarter (SW1/4) in Section Three (3), Township Eighty-four North (T84N), Range Four West (R4W) of the Fifth Principal Meridian, Jones County, Iowa as recorded in the Office of Jones County Recorder in Plat Book C, Page 100; containing a total of 0.58 acres more or less as shown on Acquisition Plat attached hereto and by reference made a part hereof.

This easement is given in fulfillment of a certain contract dated _____, for Jones County Secondary Road Project L-C-927--73-53, Parcel 2022-04.

This easement and transfer is exempt from transfer tax. Iowa Code Sec. 428A.

This easement is being acquired for public purposes and a Declaration of Value is not required according to Iowa Code.

Grantors do hereby covenant with grantees, and successors in interest, that grantors hold the real estate by title in fee simple; that they have good and lawful authority to sell and convey the real estate; that the real estate is free and clear of all liens and encumbrances except as may be above stated; and grantors covenant to warrant and defend the real estate against the lawful claims of all persons except as may be above stated. Each of the undersigned hereby relinquishes all rights of dower, homestead, and distributive share in and to the easement.

Words and phrases herein, including acknowledgment hereof, shall be construed as in the singular or plural number, and as masculine or feminine gender, according to the context

Dated _____, 20__ . (SIGN IN INK)

State of Iowa
Acting through the Department of Corrections

ALL-PURPOSE ACKNOWLEDGEMENT

STATE OF _____, }
COUNTY OF _____, } ss:

On this _____ day of _____, A.D. 20__ , before me, the undersigned, a Notary Public in and for said State, personally appeared _____

() to me personally known, **OR** () proved to me on the basis of satisfactory evidence

to be the person(s) whose name(s) is/are subscribed to the within instrument and acknowledged to me that he/she/they executed the same in his/her/their authorized capacity(ies), and that by his/her/their signature(s) on the instrument the person(s), or the entity upon behalf of which the person(s) acted, executed the instrument.

(Sign in Ink)

(Print/Type Name)

Notary Public in and for the State of _____

CAPACITY CLAIMED BY SIGNER

- () INDIVIDUAL
- () CORPORATE
OFFICER(S) _____
TITLE(S) _____
- (CORP SEAL)
- () AFFIXED
- () NO SEAL PROCURED
- () **PARTNER(S)** () **LIMITED**
() GENERAL
- () ATTORNEY-IN-FACT
- () TRUSTEE(S)
- () GUARDIAN/CONSERVATOR
- () OTHER: _____

SIGNER IS REPRESENTING:

NAME OF PERSON(S) OR ENTITY(IES)



Iowa Department of Corrections
 FY2022 Financial Status Reports
 Through the Period Ending December 2021

	Department Revised Budget	Actual Revenues and Expenditures	Encumbrances	Actual + Encumbrances	Percent (Actual of Budget)
FTE Positions					
Correctional Officer	-				
Total Staffing	-				
Resources Available					
04B Balance Brought Forward	2,211,057	2,211,057.00	-	2,211,057.00	1.00
05A Appropriation	311,088,663	311,088,663.00	-	311,088,663.00	1.00
--- Appropriation Transfer	-	-	-	-	---
--- Legislative Adjustments	-	-	-	-	---
201R Federal Support	33	-	-	-	-
202R Local Governments	236,499	88,802.57	-	88,802.57	0.38
204R Intra State Receipts	6,651,983	2,934,233.80	-	2,934,233.80	0.44
205R Reimbursement from Other Agencies	3,306	-	-	-	-
234R Transfers - Other Agencies	372,234	1,200,017.15	-	1,200,017.15	3.22
301R Interest	-	-	-	-	---
401R Fees, Licenses & Permits	631,200	411,358.18	-	411,358.18	0.65
501R Refunds & Reimbursements	1,284,201	641,766.47	-	641,766.47	0.50
602R Sale of Equipment & Salvage	105	298.23	-	298.23	2.84
603R Rents & Leases	82,876	36,667.54	-	36,667.54	0.44
604R Agricultural Sales	-	-	-	-	---
606R Other Sales & Services	-	-	-	-	---
701R Unearned Receipts	-	-	-	-	---
Total Resources Available	322,562,157	318,612,863.94		318,612,863.94	0.99
Funds Expended and Encumbered					
101 Personal Services-Salaries	244,369,790	111,321,447.55	-	111,321,447.55	0.46
202 Personal Travel (In State)	138,868	197,838.48	-	197,838.48	1.42
203 State Vehicle Operation	603,464	355,726.82	6,500.00	362,226.82	0.60
204 Depreciation	10,279	(40,106.70)	-	(40,106.70)	(3.90)
205 Personal Travel (Out of State)	24,524	11,183.09	-	11,183.09	0.46
301 Office Supplies	213,457	106,114.26	10,082.10	116,196.36	0.54
302 Facility Maintenance Supplies	1,616,913	1,019,734.92	164,963.88	1,184,698.80	0.73
303 Equipment Maintenance Supplies	867,023	390,981.20	187,786.82	578,768.02	0.67
304 Professional & Scientific Supplies	1,011,182	691,692.01	59,827.29	751,519.30	0.74
306 Housing & Subsistence Supplies	2,501,337	1,058,292.46	325,860.56	1,384,153.02	0.55
307 Ag.Conservation & Horticulture Supply	56,973	22,610.11	15.00	22,625.11	0.40
308 Other Supplies	544,616	227,609.15	133,012.16	360,621.31	0.66
309 Printing & Binding	6	-	-	-	-
310 Drugs & Biologicals	8,556,625	4,869,302.10	-	4,869,302.10	0.57
311 Food	11,759,852	5,116,095.11	196,762.09	5,312,857.20	0.45
312 Uniforms & Related Items	1,575,848	506,500.70	233,044.81	739,545.51	0.47
313 Postage	56,319	19,508.51	-	19,508.51	0.35
401 Communications	653,491	306,126.89	7,912.25	314,039.14	0.48
402 Rentals	101,314	142,459.66	6,852.76	149,312.42	1.47
403 Utilities	9,287,749	4,295,582.07	227,200.00	4,522,782.07	0.49
405 Professional & Scientific Services	2,509,076	1,253,000.32	43,149.11	1,296,149.43	0.52
406 Outside Services	7,047,993	4,058,336.23	222,014.20	4,280,350.43	0.61
407 Intra-State Transfers	10,080,247	-	-	-	-
408 Advertising & Publicity	23,102	121,386.48	20,900.00	142,286.48	6.16
409 Outside Repairs/Service	1,230,787	928,617.14	349,111.51	1,277,728.65	1.04
412 Auditor of State Reimbursements	-	-	-	-	---
414 Reimbursement to Other Agencies	5,559,899	4,712,764.15	20,100.00	4,732,864.15	0.85
416 ITD Reimbursements	1,924,641	1,141,456.64	9,500.00	1,150,956.64	0.60
417 Worker's Compensation	-	-	-	-	---
418 IT Outside Services	1,992,907	985,683.12	-	985,683.12	0.49
419 Intra Agency Reimbursement	-	-	-	-	---
433 Transfers - Auditor of State	1,200	-	-	-	-
434 Transfers - Other Agencies Services	38,238	19,456.16	-	19,456.16	0.51
501 Equipment	1,233,530	1,417,055.80	173,032.06	1,590,087.86	1.29
502 Office Equipment	13,945	17,935.44	-	17,935.44	1.29
503 Equipment - Non-Inventory	273,770	327,829.64	286,608.95	614,438.59	2.24
510 IT Equipment	2,969,164	2,217,105.61	98,632.38	2,315,737.99	0.78
601 Claims	301	-	-	-	-
602 Other Expense & Obligations	3,164,632	1,133,109.34	59,869.05	1,192,978.39	0.38
604 Securities	6,233	24,932.60	-	24,932.60	4.00
701 Licenses	12,433	10,312.12	-	10,312.12	0.83
702 Fees	121	-	-	-	-
705 Refunds-Other	-	-	-	-	---
901 Capitals	100	15,785.00	-	15,785.00	157.85
--- Balance Carry Forward	530,208	-	-	-	-
--- Reversion	-	-	-	-	---
Total Expenses and Encumbrances	322,562,157	149,003,464.18	2,842,736.98	151,846,201.16	0.47
Ending Balance				<u><u>166,766,662.78</u></u>	

Iowa Department of Corrections
 FY2022 Financial Status Reports
 Through the Period Ending December 2021

	Department Revised Budget	Actual Revenues and Expenditures	Encumbrances	Actual + Encumbrances	Percent (Actual of Budget)
FTE Positions					
Correctional Officer	-	-	-	-	-
Total Staffing	-	-	-	-	-
Resources Available					
04B Balance Brought Forward	888,820	888,820.00	-	888,820.00	1.00
05A Appropriation	289,487,225	289,487,225.00	-	289,487,225.00	1.00
--- Appropriation Transfer	-	-	-	-	---
--- Legislative Adjustments	-	-	-	-	---
201R Federal Support	25	-	-	-	-
202R Local Governments	236,499	88,802.57	-	88,802.57	0.38
204R Intra State Receipts	3,458,059	139,346.19	-	139,346.19	0.04
205R Reimbursement from Other Agencies	3,306	-	-	-	-
234R Transfers - Other Agencies	365,083	1,200,017.15	-	1,200,017.15	3.29
301R Interest	-	-	-	-	---
401R Fees, Licenses & Permits	631,200	411,358.18	-	411,358.18	0.65
501R Refunds & Reimbursements	1,239,201	627,015.49	-	627,015.49	0.51
602R Sale of Equipment & Salvage	105	298.23	-	298.23	2.84
603R Rents & Leases	82,876	36,667.54	-	36,667.54	0.44
604R Agricultural Sales	-	-	-	-	---
606R Other Sales & Services	-	-	-	-	---
701R Unearned Receipts	-	-	-	-	---
Total Resources Available	296,392,399	292,879,550.35		292,879,550.35	0.99
Funds Expended and Encumbered					
101 Personal Services-Salaries	239,119,838	108,899,433.83	-	108,899,433.83	0.46
202 Personal Travel (In State)	122,015	183,740.15	-	183,740.15	1.51
203 State Vehicle Operation	583,915	346,529.29	6,500.00	353,029.29	0.60
204 Depreciation	10,278	(40,106.70)	-	(40,106.70)	(3.90)
205 Personal Travel (Out of State)	12,018	11,183.09	-	11,183.09	0.93
301 Office Supplies	194,414	99,985.81	10,082.10	110,067.91	0.57
302 Facility Maintenance Supplies	1,616,913	1,019,734.92	164,963.88	1,184,698.80	0.73
303 Equipment Maintenance Supplies	867,023	390,981.20	187,786.82	578,768.02	0.67
304 Professional & Scientific Supplies	1,011,182	691,692.01	59,827.29	751,519.30	0.74
306 Housing & Subsistence Supplies	2,501,337	1,058,292.46	325,860.56	1,384,153.02	0.55
307 Ag.Conservation & Horticulture Supply	56,973	22,610.11	15.00	22,625.11	0.40
308 Other Supplies	506,972	196,161.47	133,012.16	329,173.63	0.65
309 Printing & Binding	5	-	-	-	-
310 Drugs & Biologicals	8,556,625	4,869,302.10	-	4,869,302.10	0.57
311 Food	11,759,852	5,116,095.11	196,762.09	5,312,857.20	0.45
312 Uniforms & Related Items	1,575,848	506,500.70	233,044.81	739,545.51	0.47
313 Postage	52,319	18,276.28	-	18,276.28	0.35
401 Communications	532,263	251,737.83	7,912.25	259,650.08	0.49
402 Rentals	101,314	142,459.66	6,852.76	149,312.42	1.47
403 Utilities	9,287,749	4,295,582.07	227,200.00	4,522,782.07	0.49
405 Professional & Scientific Services	2,473,075	1,252,382.48	43,149.11	1,295,531.59	0.52
406 Outside Services	1,515,749	1,775,485.55	222,014.20	1,997,499.75	1.32
407 Intra-State Transfers	256	-	-	-	-
408 Advertising & Publicity	23,102	121,386.48	20,900.00	142,286.48	6.16
409 Outside Repairs/Service	1,230,786	928,617.14	349,111.51	1,277,728.65	1.04
412 Auditor of State Reimbursements	-	-	-	-	---
414 Reimbursement to Other Agencies	5,391,177	4,633,078.21	20,100.00	4,653,178.21	0.86
416 ITD Reimbursements	1,885,367	1,118,962.93	9,500.00	1,128,462.93	0.60
417 Worker's Compensation	-	-	-	-	---
418 IT Outside Services	205	-	-	-	-
419 Intra Agency Reimbursement	-	-	-	-	---
433 Transfers - Auditor of State	-	-	-	-	---
434 Transfers - Other Agencies Services	18,241	15,262.16	-	15,262.16	0.84
501 Equipment	199,827	383,354.10	173,032.06	556,386.16	2.78
502 Office Equipment	13,945	17,935.44	-	17,935.44	1.29
503 Equipment - Non-Inventory	263,808	317,869.64	286,608.95	604,478.59	2.29
510 IT Equipment	1,726,851	790,568.39	98,632.38	889,200.77	0.51
601 Claims	301	-	-	-	-
602 Other Expense & Obligations	3,164,557	1,133,022.34	59,869.05	1,192,891.39	0.38
604 Securities	-	-	-	-	---
701 Licenses	12,433	10,312.12	-	10,312.12	0.83
702 Fees	120	-	-	-	-
705 Refunds-Other	-	-	-	-	---
901 Capitals	100	15,785.00	-	15,785.00	157.85
--- Balance Carry Forward	3,646	-	-	-	-
--- Reversion	-	-	-	-	---
Total Expenses and Encumbrances	296,392,399	140,594,213.37	2,842,736.98	143,436,950.35	0.48
Ending Balance				149,442,600.00	

Iowa Department of Corrections
 FY2022 Financial Status Reports
 Through the Period Ending December 2021

	Department Revised Budget	Actual Revenues and Expenditures	Encumbrances	Actual + Encumbrances	Percent (Actual of Budget)
FTE Positions					
Correctional Officer	-	-	-	-	-
Total Staffing	-	-	-	-	-
Resources Available					
04B Balance Brought Forward	1,322,237	1,322,237	-	1,322,237.00	1.00
05A Appropriation	21,601,438	21,601,438	-	21,601,438.00	1.00
--- Appropriation Transfer	-	-	-	-	---
--- Legislative Adjustments	-	-	-	-	---
201R Federal Support	8	-	-	-	-
202R Local Governments	-	-	-	-	---
204R Intra State Receipts	3,193,924	2,794,888	-	2,794,887.61	0.88
205R Reimbursement from Other Agencies	-	-	-	-	---
234R Transfers - Other Agencies	7,151	-	-	-	-
301R Interest	-	-	-	-	---
401R Fees, Licenses & Permits	-	-	-	-	---
501R Refunds & Reimbursements	45,000	14,751	-	14,750.98	0.33
602R Sale of Equipment & Salvage	-	-	-	-	---
603R Rents & Leases	-	-	-	-	---
604R Agricultural Sales	-	-	-	-	---
606R Other Sales & Services	-	-	-	-	---
701R Unearned Receipts	-	-	-	-	---
Total Resources Available	26,169,758	25,733,313.59		25,733,313.59	0.98

	Department Revised Budget	Actual Revenues and Expenditures	Encumbrances	Actual + Encumbrances	Percent (Actual of Budget)
Funds Expended and Encumbered					
101 Personal Services-Salaries	5,249,952	2,422,014	-	2,422,013.72	0.46
202 Personal Travel (In State)	16,853	14,098	-	14,098.33	0.84
203 State Vehicle Operation	19,549	9,198	-	9,197.53	0.47
204 Depreciation	1	-	-	-	-
205 Personal Travel (Out of State)	12,506	-	-	-	-
301 Office Supplies	19,043	6,128	-	6,128.45	0.32
302 Facility Maintenance Supplies	-	-	-	-	---
303 Equipment Maintenance Supplies	-	-	-	-	---
304 Professional & Scientific Supplies	-	-	-	-	---
306 Housing & Subsistence Supplies	-	-	-	-	---
307 Ag,Conservation & Horticulture Supply	-	-	-	-	---
308 Other Supplies	37,644	31,448	-	31,447.68	0.84
309 Printing & Binding	1	-	-	-	-
310 Drugs & Biologicals	-	-	-	-	---
311 Food	-	-	-	-	---
312 Uniforms & Related Items	-	-	-	-	---
313 Postage	4,000	1,232	-	1,232.23	0.31
401 Communications	121,228	54,389	-	54,389.06	0.45
402 Rentals	-	-	-	-	---
403 Utilities	-	-	-	-	---
405 Professional & Scientific Services	36,001	618	-	617.84	0.02
406 Outside Services	5,532,244	2,282,851	-	2,282,850.68	0.41
407 Intra-State Transfers	10,079,991	-	-	-	-
408 Advertising & Publicity	-	-	-	-	---
409 Outside Repairs/Service	1	-	-	-	-
412 Auditor of State Reimbursements	-	-	-	-	---
414 Reimbursement to Other Agencies	168,722	79,686	-	79,685.94	0.47
416 ITD Reimbursements	39,274	22,494	-	22,493.71	0.57
417 Worker's Compensation	-	-	-	-	---
418 IT Outside Services	1,992,702	985,683	-	985,683.12	0.49
419 Intra Agency Reimbursement	-	-	-	-	---
433 Transfers - Auditor of State	1,200	-	-	-	-
434 Transfers - Other Agencies Services	19,997	4,194	-	4,194.00	0.21
501 Equipment	1,033,703	1,033,702	-	1,033,701.70	1.00
502 Office Equipment	-	-	-	-	---
503 Equipment - Non-Inventory	9,962	9,960	-	9,960.00	1.00
510 IT Equipment	1,242,313	1,426,537	-	1,426,537.22	1.15
601 Claims	-	-	-	-	---
602 Other Expense & Obligations	75	87	-	87.00	1.16
604 Securities	6,233	24,933	-	24,932.60	4.00
701 Licenses	-	-	-	-	---
702 Fees	1	-	-	-	-
705 Refunds-Other	-	-	-	-	---
901 Capitals	-	-	-	-	---
--- Balance Carry Forward	526,562	-	-	-	-
--- Reversion	-	-	-	-	---
Total Expenses and Encumbrances	26,169,758	8,409,250.81		8,409,250.81	0.32

Ending Balance 17,324,062.78